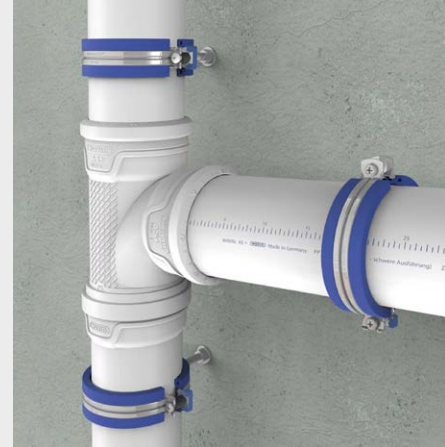


# Wavin AS+, ultimate noise reduction is no coincidence

## Wavin Low Noise Bracketing

Wavin AS+ is the new best in class plastic sound-insulating Soil & Waste piping system. Wavin AS+ represents the ultimate in noise reduction and performance. And that's no coincidence. Wavin AS+ is a mineral reinforced polypropylene (PP) low noise soil and waste solution. Due to the unique material composition for improved noise performance, premium reduction of unwanted sound emissions by the drainage system inside the building is assured. Optimal sound reduction is guaranteed due to high density of material. In order to further reduce sound, Wavin has developed a unique Wavin Low Noise bracket. It is a single bracket that can be used in multiple configurations in order to optimize noise performance of the system. It can be used in fix point and sliding point, horizontal and vertical installation, low noise and no noise application. It meets the increased requirements of DIN 4109-5 2020-08.

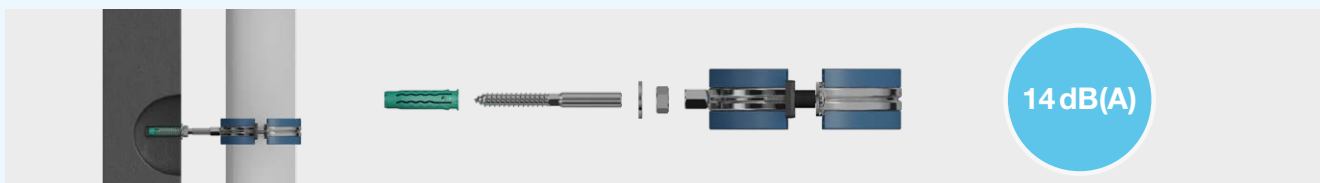


EN 14366	Volumetric flow rate		Meets standard
	2 l/s	4 l/s	
Wavin Low Noise bracket (P-BA 62/2019)	12 dB(A)	17 dB(A)	✓
Wavin No Noise bracket (PA-BA 9/2020)	<10dB(A)	10 dB(A)	✓

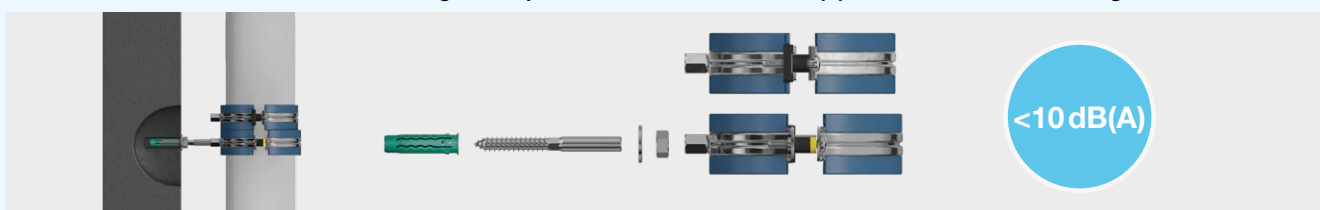
DIN 4109 (public minimum legal requirement) specification 30 dB(A)	Volumetric flow rate		Meets standard
	2 l/s	4 l/s	
Wavin Low Noise bracket (P-BA 63/2019)	14 dB(A)	19 dB(A)	✓
Wavin No Noise bracket (P-BA 64/2019)	<10 dB(A)	13 dB(A)	✓

VDI 4100 sound insulation level II / III specification 27 / 24 dB(A)	Volumetric flow rate		Meets standard
	2 l/s	4 l/s	
Wavin Low Noise bracket (P-BA 63/2019)	11 dB(A)	16 dB(A)	✓
Wavin No Noise bracket (P-BA 64/2019)	<10 dB(A)	10 dB(A)	✓

Wavin Low Noise bracket installation offering sound performance as low as 14 dB(A)\* behind the wall according to DIN4109



Wavin No Noise bracket installation offering sound performance less than 10 dB(A)\* behind the wall according to DIN 4109



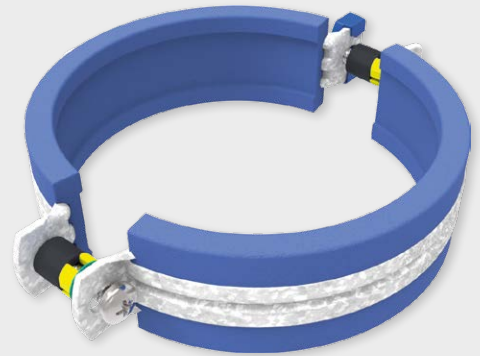
\* DIN4109 behind the wall with 2,0 l/s Fraunhofer Testreport 63/2019 an 64/2019

# Wavin AS+ and Wavin Low Noise Bracketing

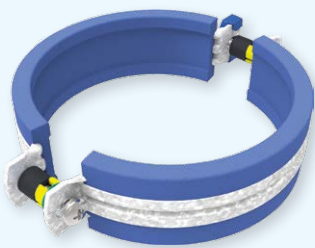
## Easy to install

All brackets will be provided with yellow distance washer (fixed and removable) to ensure brackets always are tightened correctly. Wavin low noise brackets are usable as sliding and as fixed bracket. All brackets provided by Wavin are sliding as standard. To change the bracket from sliding to fixed, a yellow distance washer is removed from the bracket before installation. The sliding and fixed brackets can both be completely tightened until the bracket ears touch the distance washers. The distance washers make sure that in any situation, the clamping force on the pipe is perfect. This results in minimal structure borne sound transmission. The distance washers also prevent over-tightening of the brackets, which could otherwise result in a reduction of sound performance.

For the No Noise bracket, a fixing bracket is placed above sliding bracket. The no-noise type installation makes use of the same "Wavin low noise bracket", only difference in this installation is the stacked installation of the fixed bracket. Each Wavin low noise bracket contains a rubber inlay that has foam side-walls. The stacked installation offers further accoustic decoupling, for increased noise performance. The stacked installation consists of a sliding bracket that is mounted to the wall a fixed bracket that is mounted to the pipe. In final installed form, the fixed bracket is carried by the sliding bracket. This results in minimal structure borne sound transmission.



## Portfolio



### Wavin System bracket

<b>Diam. DN</b>	<b>Article Nr.</b>
50	4066449
70	4066450
90	4066451
100	4066452
125	4066453
150	4066454
200	4066455