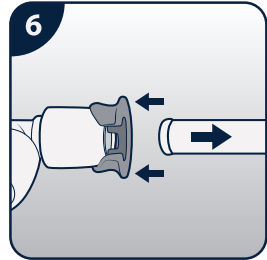
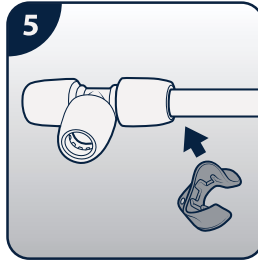
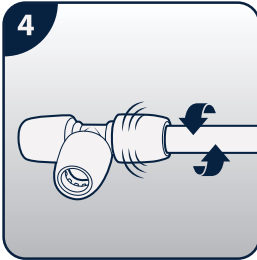
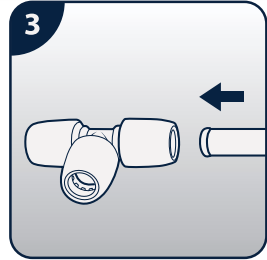
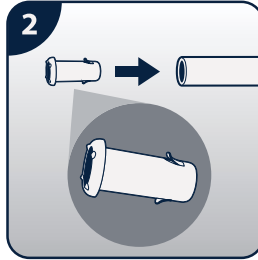
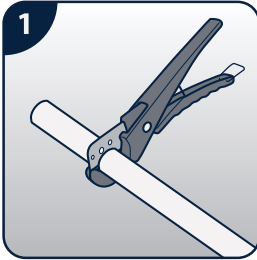


wavin Hep₂O

Push-fit Plumbing



1. Cut the pipe squarely at one of the 'A' marks using recommended pipe cutters and ensure the pipe end is free from burrs.
2. Insert a Hep₂O SmartSleeve™ pipe support sleeve into the pipe end.
3. Push the pipe firmly into the fitting,
4. Use Hep₂O's unique In4Sure™ joint recognition technology to 'feel' if the pipe is fully inserted. Tug back on the pipe to ensure the grab-ring engages correctly and prevents the pipe withdrawing.
5. Clip the HepKey™ round the pipe next to the joint to be demounted, with the flat side of the HepKey™ away from the fitting.
6. Slide the HepKey™ up to the fitting and press so that the protruding 'lugs' depress the inner release ring of the fitting. Withdraw the pipe from the fitting.

wavin

An Orbia business.