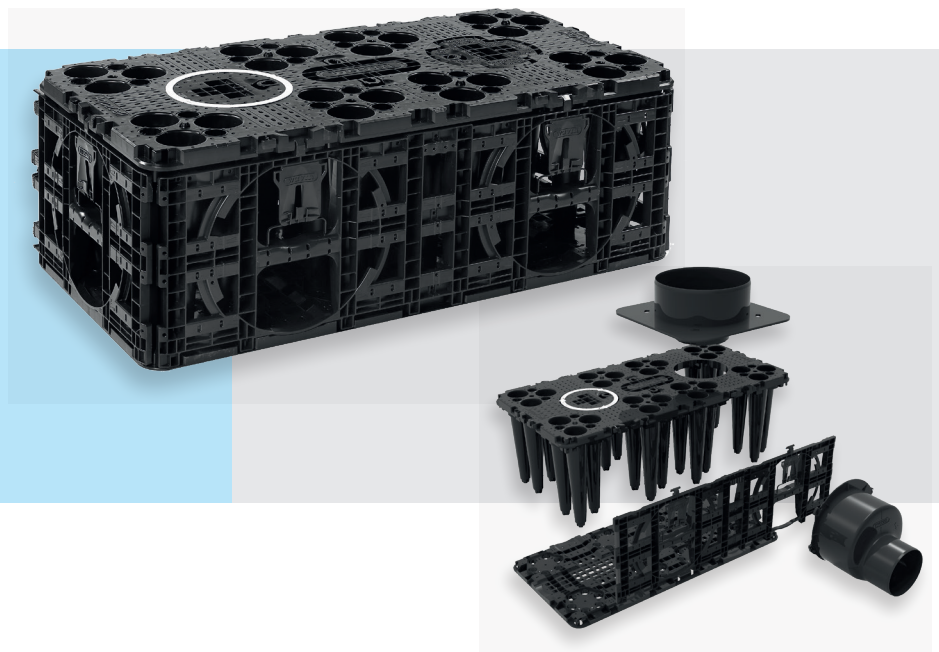


AquaCell

Product description

Geocellular unit for attenuation and infiltration tanks of rainwater.

The optimal solution for fastest installation and total access for inspection and cleaning.



Technical information

⦿ Dimensions	Length [mm]	1200	
	Width [mm]	600	
	Height [mm]	400	
	Gross volume [l] (without bottom)	306 (288)	
	Void ratio [%]	94-96%	
	Weight main unit [kg]	11	
	Pipe connections [mm]	160-315	
	Tank volume per truck [m ³]	<323	
⦿ Window of Application*	Stacking	Regular	Extra strong
	Cover depth without traffic load [m]	0,30 – 4,40	0,30 – 8,00
	Cover depth with 1 ton wheel load [m]	0,30 – 4,40	0,30 – 8,00
	Cover depth with 10 tons wheel load [m]	0,80 – 4,30	0,55 – 7,95
⦿ Accessibility	Vertical access [mm]	Ø250	
	Width inspection channel (bottom) [mm]	200	
	Accessible surface area [%]	54%	
⦿ General	Material	Recycled PP	
	Color	Black	
	Connectors	Integrated	
	Standard	EN17152-1	



Regular stacking



Extra strong stacking

* General indication for installation above groundwater level, according to instructions for single layer tanks. For multi-layer tanks the window of application may be limited. Wavin always recommends a minimum cover of 0,3 meter. For specific projects seek advice of Wavin.

