

# Wavin Ultraboard 15/18

Separating floor – In-situ concrete slab

## Product Information

**Wavin Ultraboard 15/18** routed UFH insulation boards bonded to concrete floor. Tiles or wooden floor covering. Reinforced concrete frame construction.

### 1. Floating floor finish

- Ceramic, stone, porcelain etc. floor tiles
- Laminate or engineered wood flooring

### 2. Thermal insulation and UFH pipe carrier

- 15mm or 18mm Wavin Ultraboard glass reinforcement mesh faced insulation board – 500kPa (See Table 8C.14a for full details)

### 3. Structural floor

- 225mm (min) in-situ concrete slab, 2400kg/m<sup>3</sup> density without screed
- 200mm (min) in-situ concrete slab 2400kg/m<sup>3</sup> density with screed: 40mm sand & cement screed or 80kg/m<sup>2</sup> (min) proprietary screed directly applied to slab

### 4. Ceiling

- See Table 8C.14b for ceiling treatment options

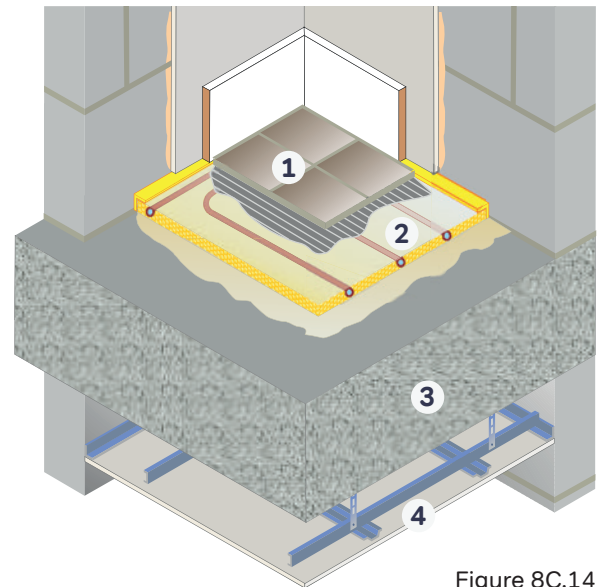


Figure 8C.14

**FASTRACKCAD**  
ARCHITECTURAL CAD DATABASES

n5Plus

## Installation Options

### Thin UFH insulation board with floor tiles direct applied

#### 1. Wavin Ultraboard 15 or 18

Glass fibre mesh faced routed 500kPa extruded polystyrene

Dimensions: 15, 18mm x 600mm x 1200mm

Pipe centres: 100 or 150mm

Pipe bore size (OD):

15mm board – 10mm pipe

18mm board – 10 or 12mm pipe

#### 2. Wavin ES5/60

Perimeter edge strip

Dimensions: 5mm x 60mm x 50m

### Thin UFH insulation board with resilient layer

#### 3. Wavin Ultraboard 15 or 18

Glass fibre mesh faced routed 500kPa extruded polystyrene

Dimensions: 15, 18mm x 600mm x 1200mm

Pipe centres: 100 or 150mm

Pipe bore size (OD):

15mm board – 10mm pipe

18mm board – 10 or 12mm pipe

#### 4. Wavin Impact 3

High compressive strength resilient layer

Dimensions: 3mm x 1m x 12m

## Ceiling Treatment Options

Any metal frame ceiling system providing 100mm (min) ceiling void screws, with all joists staggered.

### Construction notes

Materials must be installed in accordance with manufacturers' instructions to achieve required acoustic performance values.

## Acoustic Performance

Values quoted are typical and based on the treatment being installed correctly and pre-completion tested (PCT).

Airborne performance tested in accordance with BS EN ISO 140-4: 1998

Impact performance tested in accordance with BS EN ISO 140-7: 1998

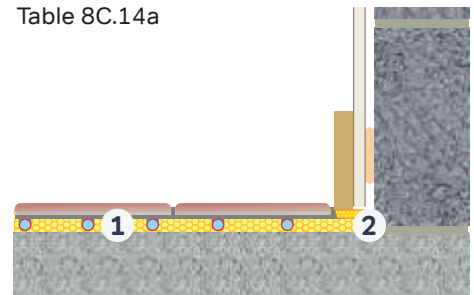
## Third Party Accreditation and Approvals



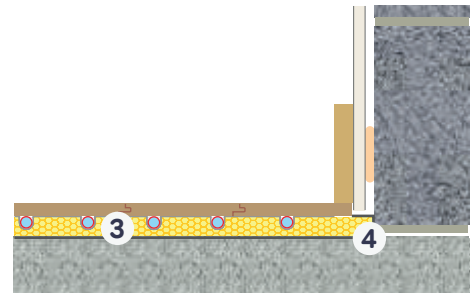
## Environmental Credentials



Table 8C.14a

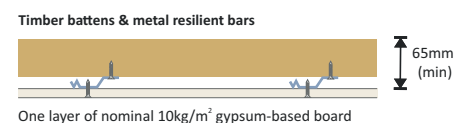
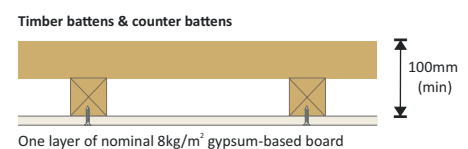
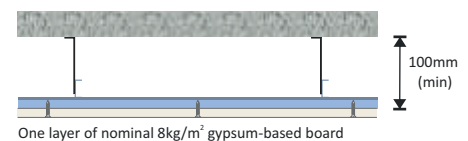


Airborne	Impact
53dB $R_w + C_{tr}$	52dB $L_{nT,w}$

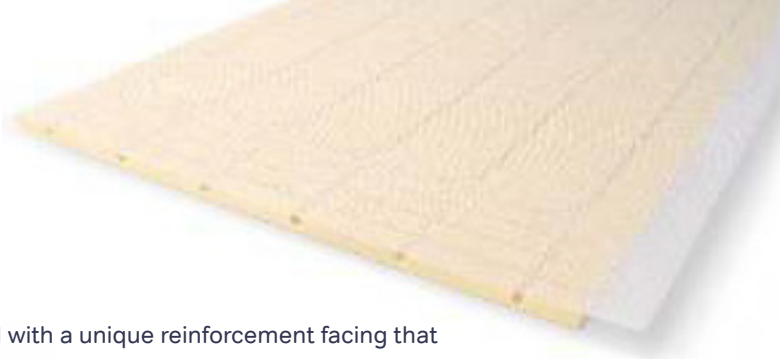


Airborne	Impact	Building Regulations
53dB $R_w + C_{tr}$	52dB $L_{nT,w}$	$\geq +8dB$

Table 8C.14b



# Wavin Ultraboard Ultra thin, High Compressive Strength Underfloor Heating Floorboards



## Product Information

**Wavin Ultraboard** is a routed under floor heating insulation board with a unique reinforcement facing that enables floor tiles to be directly adhered.

The board's long term ultra high compressive strength enables it to withstand the rigours of both domestic and commercial flooring applications. Two thickness' are available to suit 10mm and 12mm diameter pipe.

## Product Benefits

- Ultra high compressive strength – 500kPa
- Manufactured to suit pipe and centres required
- Glass reinforcement facing accepts tiles

Technical Data		Wavin Ultraboard
Product description	-	Ultra high compressive strength, glass reinforcement mesh faced UFH board
Strength at 10% compression EN 826	kPa	500
Thermal conductivity	W/mK	0.035
Temperature range	°C	-50/+75
Route sizes available (to suit pipe diameter)	mm	10, 12
Pipe centres	mm	100, 150
Board size	mm	600 x 1200
Thickness	mm	15, 18

## Third Party Accreditation and Approvals



## Environmental Credentials



## Adhesives, Fixings and Fixing Tools

To ensure each treatment is install correctly and perform effectively, Wavin offers a range of specialist high quality accessories, including adhesives, levelling screeds, fixings and fixing tools.



**Wavin FW35 Counter Sunk Perforated Washers Size: 35mm diameter**



### Wavin UL80 Adhesive

Application: Bonding Wavin Ultra top & Wavin Ultralay to the concrete / screeded floor structure

Composition: Acrylic polymer

Size: 12kg Tub

Typical coverage: Up to 80m<sup>2</sup>