

## Observe installation manual

The installation manual is part of the product and an important module of the safety concept.

- ⓘ Read and observe installation manual.
- ⓘ Installation manual must be available for the product.
- ⓘ Pass installation manual on to further users of the product.

## Intended use

The product is intended exclusively for conveying media in the allowable pressure and temperature range in PE piping systems into which it has been installed.

## Application:

PE pipe systems that transport water at internal pressure.  
For further applications contact the manufacturer.

## Related documents to this installation manual

- ⓘ Technical Handbook for Wavin QuickStream System
- ⓘ Operating instruction of the welding machine

The documents may be obtained from your representative of Wavin or via [www.wavin.com](http://www.wavin.com).

## Safety and responsibility

To guarantee the safety at work, the operator is responsible for following actions:

- ⓘ Product must only be used according to the specifications for which it has been intended.
- ⓘ Assembly and installation must be carried out by qualified personnel.
- ⓘ Piping systems must be installed by professionals and its functionality checked regularly.
- ⓘ Personnel must be instructed on a regular basis in all aspects of work safety and environmental protection not applicable for sewer system.
- ⓘ The personnel is responsible for following actions:  
Knowing, understanding and adhering to this installation manual.

## Transport and storage

- ⓘ The product must be transported and stored in its original packaging.

## Disclaimer

The technical data are not binding. They neither constitute expressly warranted characteristics nor guaranteed proper ties nor a guaranteed durability. They are subject to modification. Our General Terms of Sale apply.



### NOTICE - Faulty pipe connection

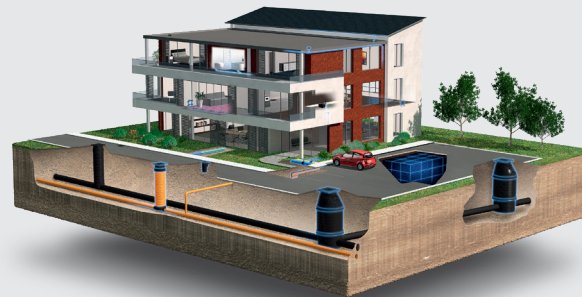
Insufficient preparation and non-observance of the installation instructions may lead to a faulty pipe connection. The functioning and life-time of the system and the connection may be affected. Please adhere to the instructions in this installation manual, the data in the "Technical Handbook for Wavin QuickStream System" and the operating instructions provided with the welding machine.

The pipe ends must be cut to the correct length, exactly at right angles, and must be fully inserted into the coupler, in accordance with the marked insertion depth. Failing to adhere to the welding instructions can lead to over heating of the pipe connection during the welding process and in extreme cases lead to a fire hazard.

NB: Never weld a Wavin Electrofusion coupler twice. A faulty connection must be cut out and be replaced by a new coupler.

## Discover our broad portfolio at [wavin.com](http://wavin.com)

- Drinking water distribution
- Waste water drainage
- Indoor climate solutions
- Urban climate resilience solutions



Building & Infrastructure



Wavin is part of Orbia, a community of companies working together to tackle some of the world's most complex challenges. We are bound by a common purpose: To Advance Life Around the World.

Orbia's Building and Infrastructure business Wavin is an innovative solutions provider for the global building and infrastructure industry. Backed by more than 60 years of product development experience, Wavin is advancing life around the world by building healthy, sustainable environments for global citizens. Whether it's to improve the distribution of clean drinking water, to make sanitation accessible for everyone, to create climate resilient cities, or to design comfortable living spaces, Wavin collaborates with municipal leaders, engineers, contractors, and installers to help future-proof communities, buildings and homes. Wavin has 12,000+ employees around 65 production sites worldwide, serving over 80 countries through a global sales and distribution network.

Wavin B.V. World Trade Center (WTC) | Wavin Tower G5 Schiphol Boulevard 425  
1118 BK Schiphol The Netherlands  
Internet [www.wavin.com](http://www.wavin.com) | E-mail [info@wavin.com](mailto:info@wavin.com)

© 2024 Wavin Wavin reserves the right to make alterations without prior notice. Due to continuous product development, changes in technical specifications may change. Installation must comply with the installation instructions.

Installation manual

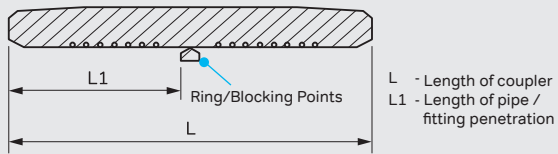
# Wavin Electrofusion coupler

DN40 mm to DN315 mm



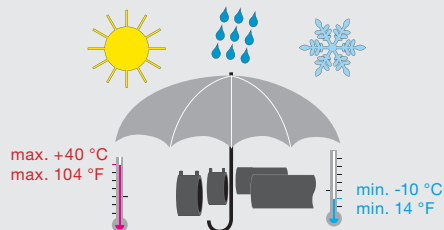
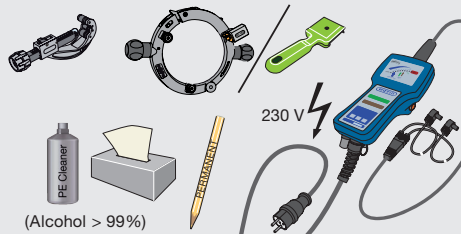
An Orbia business.

# Installation Wavin Electrofusion coupler DN40 mm to DN315 mm

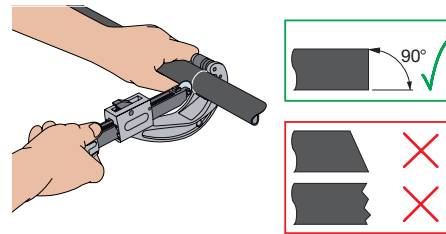


SAP no.	Name	L [mm]	L1 [mm]
4081515*	PE Electrofusion Coupler d40	60	28
4081516*	PE Electrofusion Coupler d50	60	28
4081517*	PE Electrofusion Coupler d56	60	28
4081518*	PE Electrofusion Coupler d63	60	28
4081519*	PE Electrofusion Coupler d75	60	28
4081520*	PE Electrofusion Coupler d90	60	28
4081521*	PE Electrofusion Coupler d110	60	28
4081522*	PE Electrofusion Coupler d125	60	28
4081523*	PE Electrofusion Coupler d160	60	28
4036298	Electrofusion Coupler WaviDuo 200	150	75
4064881	PE100 WaviDuo Coupler BK 250 SDR26	150	75
4064882	PE100 WaviDuo Coupler BK 315 SDR26	150	75

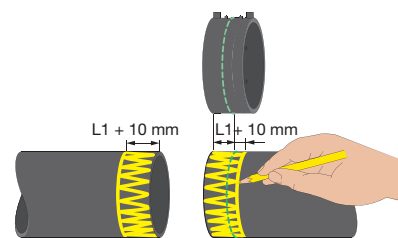
\* Electrofusion coupler without ring/blocking points.



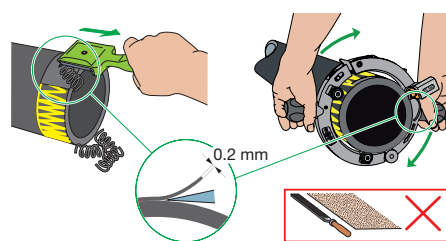
## 1 Cutting



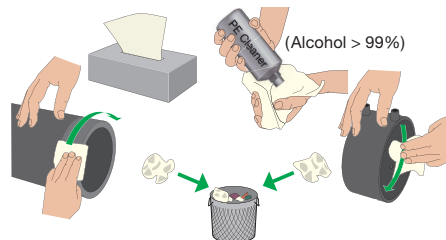
## 2 Marking the peeling surface



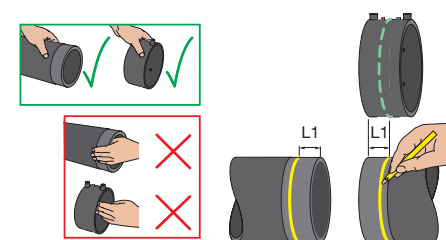
## 3 Peeling



## 4 Cleaning

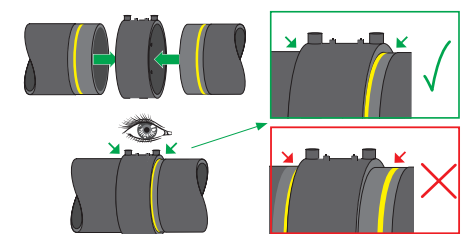


## 5 Marking the depth of insertion



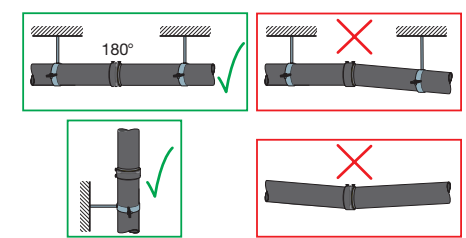
## 6 The assembly process with the insertion depth control

The assembly process with the insertion depth control



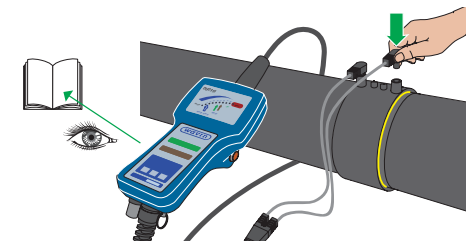
## 7 Protection of the elements against changing position

Protection of the elements against changing position



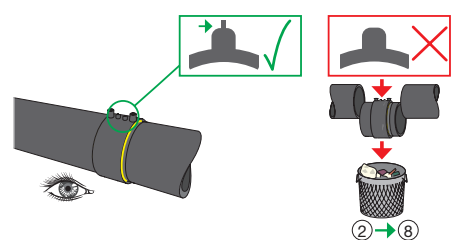
## 8 Connecting the electrofusion machine

Connecting the electrofusion machine



## 9 Welding process control

Welding process control



## 10 Minimum of the cooling time

Minimum of the cooling time

