

Tigris K5/M5

Product description

The press fitting program of Tigris offers two core lines based on your preferred choice of body material.

Wavin Tigris K5 and Tigris K1 are press fittings with bodies made of the high technical performance plastic Polyphenylsulfone (PPSU). Wavin Tigris M5 and Tigris M1 are metal press fittings with bodies made of UBA listed drinking water approved brass materials.

Both Radial Press-Fit, in PPSU or brass, cover a complete range of fittings that fit up to 75mm multilayer composite pipes.



Figure 1: Radial-Press assortment – PPSU & Brass Fittings

Applications

The systems can be used for sanitary (including potable water), air pressure and heating applications. The Wavin multilayer pipe (Left) fulfils the requirements according to ISO 21003 and carries amongst others DVGW, KIWA, KOMO and WaterMark certifications. The Wavin multilayer pipe (Right) fulfils the requirements according to ISO 21003.

Wall thickness pipe (mm)			
DN	Wall thickness	DN	Wall thickness
16	2.0	40	4.0
20	2.25	50	4.5
25	2.5	63	6.0
32	3.0	75	7.5

Figure 2: Multilayer pipe for Potable water, heating and air pressure applications (Left) and Multilayer pipe for low temperature installation of heating system (Right)

Technical specifications MP Pipes

Pipe material	PE-Xc pipes Internal layer made of PE-Xc (electron-beam crosslinked polyethylene), external layer made of PE, with an aluminium layer between, connected by special adhesive agents		PE-RT pipes Internal layer made of PE-RT (raised temperature resistance polyethylene), external layer made of PE, with an aluminium layer between, connected by special adhesive agents
Classification fire behaviour	DIN EN 13501: E DIN 4102: B2		DIN EN 13501: E DIN 4102: B2
Application conditions	Application class 1 2 4 5	Design temp. 60°C 70°C 20-40-60°C 20-40-80°C	Design pressure 10 bar 10 bar 10 bar 6 bar
Chilled water (when protected against frost with eg. Ethylene glycol <35%)		T_{min} -10°C	Max pressure 10 bar
Coefficient of thermal expansion	0,025–0,030 mm/m-K		
Thermal conductivity	0,4 W/m-K		
Pipe roughness	0,007 mm		
Hot water resistance	100°C short term loading, 95°C long term loading (max. 6 bar)		
Max. permanent operating	10 bar (at T _{max} = 70°C)		

TECHNICAL DATASHEET

Features of Tigris K5/M5



With MULTI JAW, Tigris K5 and Tigris M5 guarantees secure connections regardless of the profile. You can use all of the most common jaw profiles to press the new Tigris K5 or Tigris M5 as they are compatible with U, Up, H, TH and B profiles.

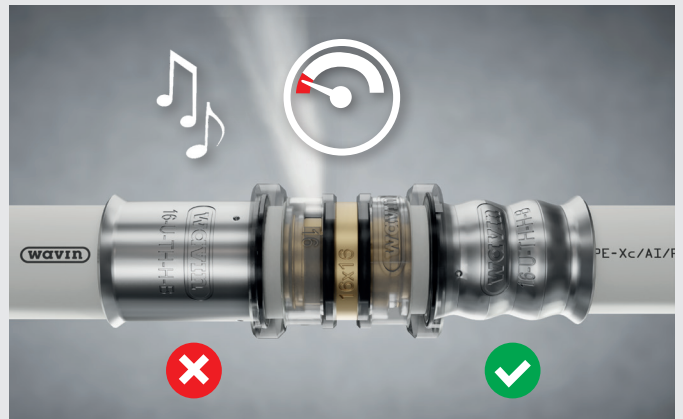
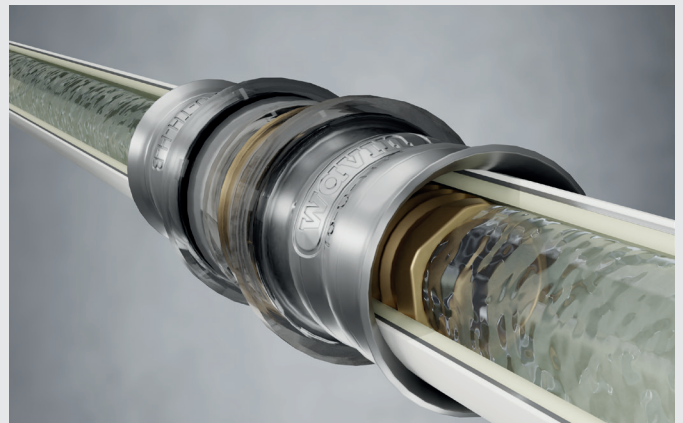
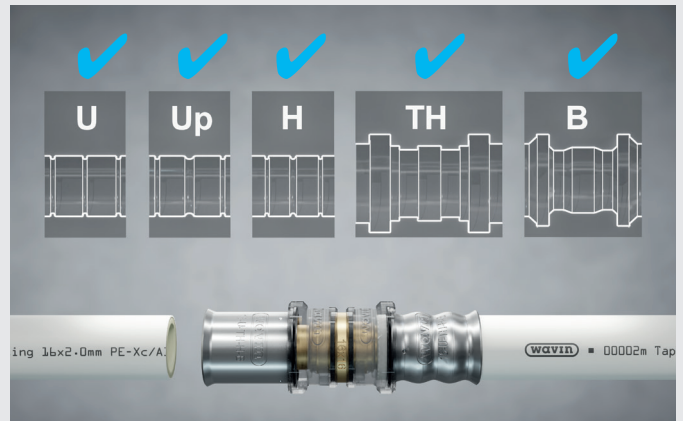
This eliminates the need to buy new equipment and makes it easy to switch to the new Tigris M5 or Tigris K5 without worrying about your system warranty.



Reliability is a key requirement to ensure lifetime performance, but also reducing pressure loss to a minimum defines the quality and performance of the installation. Designed specifically to deliver optimal flow performance, the five-series of Tigris with OPTI FLOW have up to a 50% larger inner bore. This is especially relevant for the smaller pipe diameters where the impact of inner bore on pressure loss is the biggest.



From a hygiene perspective executing the pressure test with air instead of water might be preferable or even obligatory. However, with Defined Leak alone, an unpressed fitting might be hard to locate on an air test. Therefore, Tigris M5 and Tigris K5 are additionally equipped with Acoustic Leak Alert. When executing a pressure test with air, this feature enables installers to trace an entire system for leaks caused by connections that have not been pressed. Of course, testing with water can also be done.



Wavin Tigris K5/M5 – certified by

Wavin Tigris systems holds the following certifications:

KIWA (Netherlands) | VA + GDV (Denmark) | DVGW (Germany) | RISE (Sweden) | SINTEF (Norway)
ATG (Belgium) | NF (France) | WRAS (United Kingdom) | STF (Finland) | B-Mark (Poland) | IIP-UNI (Denmark)
WaterMark approval (Australia)



Scan for
additional information

Wavin | www.wavin.com/asia | wavinapac@wavin.com

