

## Introduction to the correct fixing of OSMA Inspection Chamber Covers & Frames

### Inspection Chamber Covers

The regulations have been updated to reflect health and safety issues on site.

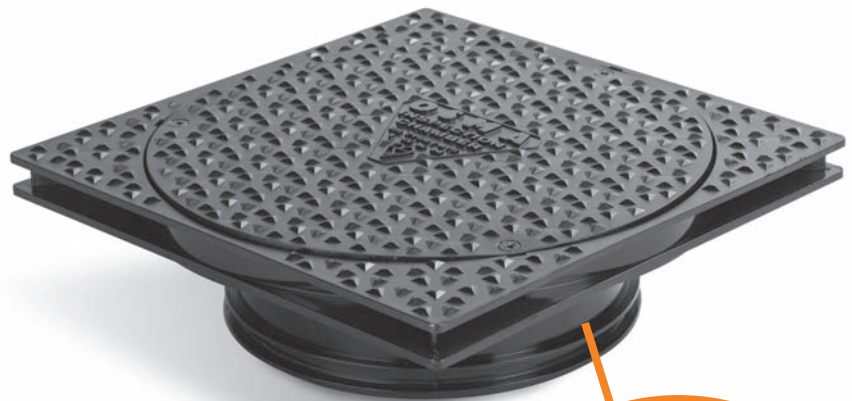
Extract from Part H: "Small lightweight access covers should be secured (for example with screws) to deter unauthorised access (for example by children)."

A lightweight access cover is defined as a cover that meets the requirements of standard loading classification A15 (1.5T). Larger plastic lightweight covers and frames however, are typically designed to withstand a load greater than 1.5T, usually 3 – 3.5 T (30 – 35kN), which can be used in domestic driveways when surrounded by a concrete plinth.

All OSMA lightweight access covers listed below are secured to the frame by means of screws to prevent unauthorised access.

All Frames should be secured to their shafts by means of screws or eyebolts. In some cases eyebolts are provided as follows:

- 4D325** – Screw to shaft not provided.
- 4D961** – Screw to shaft not provided.
- 4D969** – Screw to shaft not provided.
- 4D920** – Fixing eyebolts to shaft provided.
- 4D924** – Fixing eyebolts to shaft provided.
- 4D927** – Fixing eyebolts to shaft provided.



#### 4D961/969

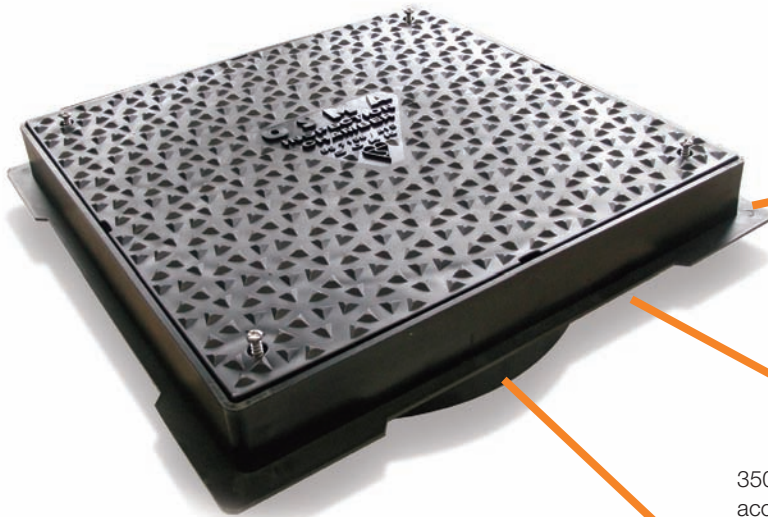
Increased **internal** location depth, ensuring unit is not easily knocked off during installation. Spigot of frame should be secured to shaft by means of screws (not provided).



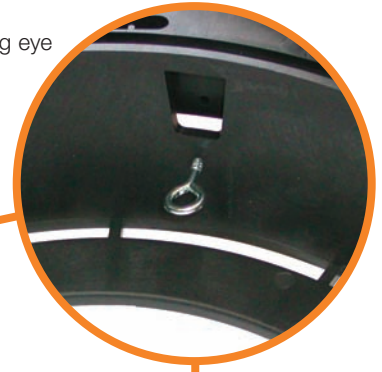
#### 4D325

Increased **external** location depth, ensuring unit is not easily knocked off during installation. Socket of frame should be secured to shaft by means of screws (not provided).

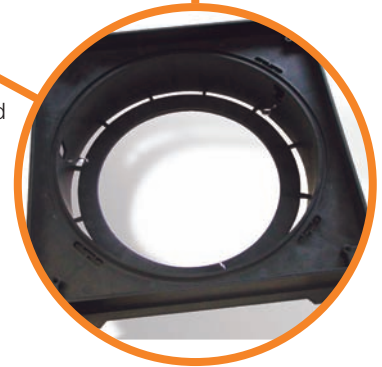
## 4D920 - Square Cover and Frame



Frame fixing eye bolts



350mm restricted access



### Advantages

- Anti-Slip Cover – new units have been designed with a standardised non-slip finish
- Dual fixing system – for added security, fixing the frame to the shaft and cover to frame
- Kitemarked to BSEN 13598-1
- Loading up to 15kN when unsupported
- 4D920 can be installed in areas requiring a loading up to 50kN when supported by a concrete plinth
- Access diameters designed for use dependant upon application
- 4D920/924 – 350mm restricted access for invert depths both less than and greater than 1.2m
- 4D927 – 450mm for use at invert depths less than 1.2m
- For use with the Shallow Inspection Chamber, Universal and Non-entry Inspection Chamber systems
- Provide optimal surface finishes for block paviors, tarmac and others



Increased location depth ensuring the unit is not easily knocked off during installation. (4D920 & 4D924 only)



Frame fixing eye bolts



## 4D924/927 - Round Cover and Frame

### Wavin

Registered Office  
Hazlehead  
Crow Edge  
Sheffield  
S36 4HG

[www.wavin.co.uk](http://www.wavin.co.uk)



**Solutions for Essentials**