

INTERNATIONAL PRODUCT LIST

# Wavin Hep<sub>2</sub>O

Flexible PB Push-fit  
Plumbing System



**wavin**

orbia 

# Hep<sub>2</sub>O

## Push-fit Plumbing System



## Contents

④ Hep <sub>2</sub> O Pipe	3
④ Hep <sub>2</sub> O Fittings	4-12
④ Hep <sub>2</sub> O Accessories	13-14
④ Making connections	15-18



The Hep<sub>2</sub>O system is available in the sizes 15, 22 and 28mm.  
The dimensioning is easy to recognize by the colour packaging:

- ④ 15mm: blue
- ④ 22mm: purple
- ④ 28mm: orange

### Abbreviations:

**BSP** = British Standard Pipe Thread  
**DZR** = Dezincification Resistant Brass

Selection of Brassware Fittings range between DZR and non-DZR families depends on local regulations applying in each market.



# Hep<sub>2</sub>O

## Product details **Pipe**



### Description

#### Straight Coil Pipe – Barrier

Straight Coiled Lengths in SmartPack dispensers. 5 Layer pipe with internal oxygen barrier layer

Dia (mm)	Article code	SAP code
15 x 10m	HXX10/15W	3070750
15 x 25m	HXX25/15W	3029640
15 x 50m	HXX50/15W	3029644
15 x 100m	HXX100/15W	3029638
22 x 10m	HXX10/22W	3072543
22 x 25m	HXX25/22W	3029641
22 x 50m	HXX50/22W	3029645
28 x 10m	HXX10/28W	3070751
28 x 25m	HXX25/28W	3029642
28 x 50m	HXX50/28W	3029646



#### Straight Barrier Pipe – Cut Lengths

15 x 3m	HXX03/15W	3029634
15 x 6m	HXX06/15W	3030789
22 x 3m	HXX03/22W	3029635
22 x 6m	HXX06/22W	3030790
28 x 3m	HXX03/28W	3029636
28 x 6m	HXX06/28W	3030791



#### Pipe in Pipe System

50m	HXXC5015 BU	3011285
50m	HXXC5015 RD	4013649
50m	HXXC5022 BU	3011286
50m	HXXC5022 RD	4013650
25m	HXXC2528 BU	4013647
25m	HXXC2528 RD	4013651

# Hep<sub>2</sub>O

## Product details **Fittings**

	Description	Dia (mm)	Article code	SAP code
	<b>Straight Connectors</b>	15 x 15	HD1/15W	3029590
		22 x 15	HD3B/22W	3070724
		22 x 22	HD1/22W	3029591
		28 x 28	HD1/28W	3030695
	<b>Spigot-socket Reducer</b>	22 x 15	HD2/22W	3029603
		28 x 22	HD2/28W	3030692
	<b>Elbow 90°</b>	15	HD5/15W	3029616
		22	HD5/22W	3029617
		28	HD5/28W	3030673
	<b>Elbow 90° Single Socket</b>	15	HD4/15W	3029612
		22	HD4/22W	3029613
	<b>Obtuse bend 135° Single Socket</b>	15	HD8/15W	3030680
		22	HD8/22W	3030681
	<b>Equal Tee</b>	15	HD10/15W	3029593
		22	HD10/22W	3029594
		28	HD10/28W	3030675
	<b>End Reduced Tee</b> (dimensions: end x branch x end)	22 x 22 x 15	HD12/22W	3029595
		28 x 28 x 22	HD12/28W	3030674

**Description****Double End Reduced Tee**

(dimensions: end x branch x end)

**Dia (mm)**

15 x 22 x 15

22 x 28 x 22

**Article code**

HD18/22W

HD18/28W

**SAP code**

3030719

3030720

**Branch Reduced Tee**

(dimensions: end x branch x end)

22 x 15 x 22

28 x 22 x 28

28 x 15 x 28

HD13/22W

HD13/28W

HD13A/28W

3029597

3030672

3030671

**Branch Reduced Spigot Tee**

(dimensions: end x branch x end)

22 x 15 x 22

HD15/22W

3030717

**Branch & One End Reduced Tee**

(dimensions: end x branch x end)

22 x 15 x 15

28 x 22 x 22

HD14/22W

HD14/28W

3029600

3030670

**Demountable Stop End**

15

22

28

HD62/15W

HD62/22W

HD62/28W

3029619

3029620

3030703

**Tank Connector**

15mm and 22mm versions for cold water only

1/2" BSP x 15

3/4" BSP x 22

1" BSP x 28 (Brass)

HX20/15W

HX20/22W

HX20/28W

3030706

3030707

3041309

**Straight Tap Connector**

1/2" BSP x 15

3/4" BSP x 15

3/4" BSP x 22

HD25A/15W

HD25B/15W

HD25B/22W

3029604

3029605

3030696

**Hand-Titan Tap Connectors**

With rubber washer

BSP 1/2" x 15

BSP 3/4" x 15

BSP 3/4" x 22

HD26A/15W

HD26B/15W

HD26B/22W

3029607

3029608

3029609

# Hep<sub>2</sub>O

## Product details **Fittings**



**Description**  
Flexible Tap Connectors  
Hep<sub>2</sub>O x BSP Nut

Dia (mm)	Article code	SAP code
150 braided, 15 x 1/2" BSP	HD425A/15W	3039585
300 braided, 15 x 1/2" BSP	HD125A/15W	3030697
300 braided, 15 x 3/4" BSP	HD125B/15W	3030698
300 braided, 22 x 3/4" BSP (Full Bore)	HD125C/22W	3039568
300 braided, 22 x 3/4" BSP	HD125B/22W	3030699
500 braided, 15 x 1/2" BSP	HD225A/15W	3030700
500 braided, 15 x 3/4" BSP	HD225B/15W	3030701
500 braided, 22 x 3/4" BSP (Full Bore)	HD225C/22W	3039577
500 braided, 22 x 3/4" BSP	HD225B/22W	3030702
1000 braided, 15 x 1/2" BSP	HD325A/15W	3039583
1000 braided, 22 x 3/4" BSP	HD325B/22W	3039584



**Description**  
Flexible Tap Connectors  
Hep<sub>2</sub>O x Hep<sub>2</sub>O

300 braided, 15 x 15	HD125H/15W	3039575
300 braided, 22 x 22	HD125H/22W	3039576
500 braided, 15 x 15	HD225H/15W	3039580
500 braided, 22 x 22	HD225H/22W	3039581



**Description**  
Flexible Tap Connectors  
Hep<sub>2</sub>O x Elbow BSP Nut

300 braided, 15 x 1/2" BSP	HD125D/15W	3039569
----------------------------	------------	---------



**Description**  
Flexible Tap Connectors  
Hep<sub>2</sub>O x Brass Service  
Valve x BSP Nut

300 braided, 15 x 1/2" BSP	HD125E/15W	3039570
300 braided, 22 x 3/4" BSP	HD125E/22W	3039571
500 braided, 15 x 1/2" BSP	HD225E/15W	3039578
500 braided, 15 x 3/4" BSP	HD225I/15W	3039582
500 braided, 22 x 3/4" BSP	HD225E/22W	3039579



**Description**

**Flexible Tap Connectors  
Hep<sub>2</sub>O x Brass Service  
Valve (Handle) x BSP Nut**

**Dia (mm)**

300 braided, 15 x 1/2" BSP  
300 braided, 22 x 3/4" BSP

**Article code**

HD125EH/15W  
HD125EH/22W

**SAP code**

3039473  
3039572



**Flexible Tap Connectors  
Hep<sub>2</sub>O x Monobloc Mixers**

300 braided, 15 x M10\*  
300 braided, 15 x M12\*  
\*sold and priced as a pair

HD125F/15W  
HD125G/15W

3039573  
3039574



**Bent Tap Connector**

1/2" BSP x 15

HD27/15W

3029610



**Adaptor - Female BSP/  
Hep<sub>2</sub>O Socket**  
DZR Brass

1/2" BSP x 15  
3/4" BSP x 15  
3/4" BSP x 22  
1" BSP x 28

HX28/15W  
HX24/15W  
HX28/22W  
HX28/28W

3030663  
3030665  
3030666  
3030664



**Adaptor - Female BSP/  
Hep<sub>2</sub>O Socket**  
Non DZR Brass

3/8" BSP x 15  
1/2" BSP x 15  
1/2" BSP x 22  
3/4" BSP x 22  
1" BSP x 28

HE633/15W  
HE28/15W  
HE653/22W  
HE28/22W  
HE28/28W

3031478  
3031475  
3031374  
3031355  
3031708



**Wall Flange Plate Adaptor  
- Female**  
Non-DZR Brass

1/2" BSP x 15


HE800/15W


3041310





# Hep<sub>2</sub>O


## Product details **Fittings**


	Description	Dia (mm)	Article code	SAP code
	<b>Adaptor – Male BSP/Hep<sub>2</sub>O Socket</b> DZR Brass	1/2" BSP x 15	HX29/15W	3030667
		3/4" BSP x 22	HX29/22W	3030669
		1" BSP x 28	HX29/28W	3030668


	<b>Adaptor – Male BSP/Hep<sub>2</sub>O Socket</b> Non DZR Brass	1/2" BSP x 15	HE29/15W	3031356
		1/2" BSP x 22	HE652/22W	3031373
		3/4" BSP x 22	HE29/22W	3031357
		1" BSP x 28	HE29/28W	3031358


	<b>Adaptor – Female BSP/Hep<sub>2</sub>O Spigot</b> DZR Brass	1/2" BSP x 15	HX30/15W	3031019
		3/4" BSP x 22	HX30/22W	3031021
		1" BSP x 28	HX30/28W	3031022

	<b>Adaptor – Female BSP/Hep<sub>2</sub>O Spigot</b> Non DZR Brass	1/2" BSP x 15	HE30/15W	3031486
		3/4" BSP x 22	HE30/22W	3031487
		1" BSP x 28	HE30/28W	3031749

	<b>Adaptor – Male BSP/Hep<sub>2</sub>O Spigot</b> DZR Brass	1/2" BSP x 15	HX31/15W	3031023
		3/4" BSP x 22	HX31/22W	3031024
		1" BSP x 28	HX31/28W	3031025

	<b>Adaptor – Male BSP/Hep<sub>2</sub>O Spigot</b> Non DZR Brass	1/2" BSP x 15	HE31/15W	3031645
		3/4" BSP x 22	HE31/22W	3031646
		1" BSP x 28	HE31/28W	3031750

	<b>Threaded Elbow – Female</b> Non DZR Brass	1/2" BSP x 15	HE5/15W	3031476
		1/2" BSP x 22	HE5A/22W	3031370
		3/4" BSP x 22	HE5/22W	3031369
		1" BSP x 28	HE5/28W	3031737

	<b>Threaded Elbow – Male</b> Non DZR Brass	1/2" BSP x 15	HE5M/15W	3031477
		1/2" BSP x 22	HE654/22W	3031375
		3/4" BSP x 22	HE5M/22W	3031371
		1" BSP x 28	HE5M/28W	3031738





**Description**

**Draincock**

Brass 15mm spigot  
DZR Brass

**Dia (mm)**

15

**Article code**

HX32/15 GY

**SAP code**

4013770



**Wall Plate Elbow**

1/2" BSP x 15

HX6/15W

3030711

3/4" BSP x 22

HX6/22W

3030712



**Wall Screw Elbow**

Non DZR Brass

1/2" BSP x 15

HE6C/15W

3031581

1/2" BSP x 22

HE6CB/22W

3031583

3/4" BSP x 22

HE6C/22W

3031582



**Universal Wall Plate Elbow**

Non DZR Brass

1/2" BSP x 15

HE6A/15W

3031580



**Wall Plate Elbow**

Non DZR Brass

1/2" BSP x 15

HE6MA/15W

3031480

1/2" BSP x 22

HE6MA/22W

3031481



**Tee - Female Threaded Branch**

Non DZR Brass

15 x 1/2" BSP Branch

HE16/15W

3031483

22 x 1/2" BSP Branch

HE16A/22W

3031723

22 x 3/4" BSP Branch

HE16/22W

3031485

# Hep<sub>2</sub>O

## Product details **Fittings**



### Description

**Wall Plate Tee – Female**  
Non-DZR Brass

### Dia (mm)

15 x 1/2" BSP Branch\*  
15 x 1/2" BSP Branch  
22 x 1/2" BSP Branch

### Article code

HE7/15W  
HE7MA/15W  
HE7MA/22W

### SAP code

3031376  
3031488  
3031482

\*HE7/15W has offset branch



**Cylinder Connector Spigot**  
DZR Brass

1" BSP x 22 spigot

HX34/22 GY

3011459



### Gate Valve – Hot/Cold

DZR Brass  
Brass fitted with Hep<sub>2</sub>O ends  
(suitable for hot and cold water and central heating)

15 x 15  
22 x 22

HX35/15W  
HX35/22W

3030722  
3030723



### Stopcock – Cold Water

Fitted with Hep<sub>2</sub>O ends  
(for cold water use only)

15 x 15  
22 x 22

HX36/15W  
HX36/22W

3030693  
3030694



### Stopcock – Cold Water

Hep<sub>2</sub>O to MDPE/HDPE  
conversion 22mm Hep<sub>2</sub>O to  
25mm MDPE/HDPE

25 MDPE/HDPE x 22 Hep<sub>2</sub>O

HX43/22W

3030710



### Shut-off Valve

With hot/cold indicator insert  
(not for use with central heating)

15

HX37/15W

3030708



### Appliance Valve

With hot/cold indicator insert  
(not for use with central heating)

15

HX38/15W

3030709

**Description****Straight Service Valve**

With hot/cold indicator insert  
(not for use with central heating)

**Dia (mm)**

15

**Article code**

HX18/15W

**SAP code**

3030704

**Angled Service Valve**

With hot/cold indicator insert  
(not for use with central heating)

15

HX19/15W

3030705

**Double-Check Valve**

15 x 15

HX72/15W

3030713

**Lever Ball Valve**

Non-DZR Brass  
(no fixing points)

15 x 15

HE37C/15W

3031728

22 x 22

HE37C/22W

3031729

28 x 28

HE37C/28W

3031730

DZR Brass  
(with fixing points)

15 x 15

HX22/15W

3030724

22 x 22

HX22/22W

3030725

Suitable for hot and cold water and central heating

**Shut-off Valve - Hidden Handle**

Non-DZR Brass

22 x 22

HE37A/22W

3031725

**Shut-off Valve - Tri-Handle**

Non-DZR Brass

15 x 15

HE37B/15W

3031726

22 x 22

HE37B/22W

3031727

**Ball Valve - Chrome Lever Handle**

Non-DZR Brass

15 x 15

HE37D/15W

3031731

22 x 22

HE37D/22W

3031732

Handle Extension Kit

HE39W

4041597

# Hep<sub>2</sub>O

## Product details **Fittings**



### Description

**Ball Valve – Hidden Handle**  
Non-DZR Brass

### Dia (mm)

15 x 15  
22 x 22  
Handle Extension Kit

### Article code

HE37E/15W  
HE37E/22W  
HE39W

### SAP code

3031734  
3031735  
4041597



**Manifolds – Closed Spigot Type**  
Polybutylene

2 Port 22 x 15  
3 Port 22 x 15

HX88/22W  
HX89/22W

3030726  
3030728



**Manifolds – Socket to Socket Type**  
Polybutylene

2 Port 22 x 15  
3 Port 22 x 15

HX88B/22W  
HX89B/22W

3030727  
3030729



**Manifolds – Plated Brass with Taps**  
Modular system – can be used to build manifolds with any number of ports and combinations of 15mm and 22mm outlets

1-Port 3/4" BSP x 22  
2-Port 3/4" BSP x 15  
3-Port 3/4" BSP x 15  
4-Port 3/4" BSP x 15

HX91T/22W  
HX92T/15W  
HX93T/15W  
HX94T/15W

3030730  
3030732  
3030733  
3030731



### Manifold end-caps

3/4" BSP Female  
3/4" BSP Male

HX97 GY  
HX98 GY

4013739  
4013740

# Hep<sub>2</sub>O

## Product details **Accessories**



### Description

#### Lubricant

400 ml Aerosol Can

### Dia (mm)

Joint Lubricant Spray

### Article code

HX200

### SAP code

4026146



### SmartSleeve

15

HX60/15W

3029622

22

HX60/22W

3029623

28

HX60/28W

3030691



### Pipe Clip – Screw Type

15

HX85/15W

3030688

22

HX85/22W

3030689

28

HX85/28W

3030690



### Pipe Clip Spacer

15

HX86/15W

3030682

22

HX86/22W

3030683



### Pipe Clip – Cable Type

15

HX65/15W

3030685

22

HX65/22W

3030686

28

HX65/28W

3030687



### Blanking Peg

For Demountable Fittings

15

HX44/15W

3030714

22

HX44/22W

3030715

28

HX44/28W

3030980



### HepKey Plus

For Demountable Fittings

15

HX79/15W

3029625

22

HX79/22W

3029626





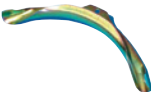

28

HX79/28W

3030676

# Hep<sub>2</sub>O

## Product details **Accessories**

	Description	Dia (mm)	Article code	SAP code
	<b>HepTool</b> For Demountable Fittings in restricted access locations	10 and 28	HX77/10W	3039598
		15 and 22	HX77/15W	3039472
	<b>Hep<sub>2</sub>O Joint Testing Kit</b> Used to pressure test Hep <sub>2</sub> O installations at site. See hep <sub>2</sub> O Installer Guide for details of test procedures.		HX81 GR	3032329
	<b>Terminal Back Plate</b>	Terminal back plate	HX103 BL	4013794
	<b>Conduit Terminal</b>	1/2" BSP x 15	HX101/15W	3031753
	<b>Cold Forming Bend Fixture</b> Metal with passivate finish	15	HX75/15 GR	4013715
		22	HX75/22 GR	4013718
	<b>Pipe Cutters</b>	For pipe diameter up to 28 mm max. (standard)	HD74 GR	4013791
		For pipe diameter up to 25 mm max. (procutter)	HD75 GR	4013793
		For pipe diameter up to 42 mm max. (ratchet)	HD77 GR	3035615
		For pipe diameter up to 28 mm max. (ratchet)	HD78 GR	3032191





# Hep<sub>2</sub>O

## Making connections

### Jointing with Hep<sub>2</sub>O pipe and fittings

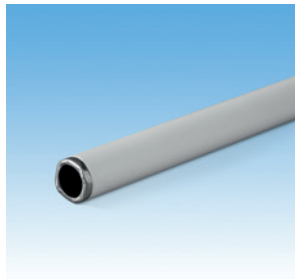
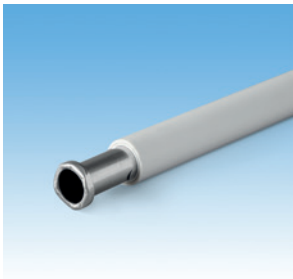
#### SmartSleeve™ pipe support sleeve

Before making a joint using Hep<sub>2</sub>O pipe, it is essential to insert a Hep<sub>2</sub>O SmartSleeve™ pipe support sleeve into the cut pipe end. The only exception is when connecting to the open spigot end of a Hep<sub>2</sub>O fitting.

#### The SmartSleeve™ has several purposes:

- ④ It ensures the pipe retains its circular cross-section under all operating conditions
- ④ It eases insertion of the pipe into the fitting
- ④ The profiled end of the SmartSleeve™ helps you to check the pipe is fully inserted. See In4Sure™ joint recognition technology
- ④ It maintains the rigidity of the pipe within the fitting
- ④ Barbs on the SmartSleeve™ lock it in the pipe, which helps ensure it is not left in the fitting when demounting

All SmartSleeve™ pipe inserts are manufactured from 'food quality' 316 stainless steel and are impervious to contaminants. They are designed to be captive in the pipe but can be removed if required, using long nosed pliers. However, if damaged, the SmartSleeve™ must not be re-used.



Inserting SmartSleeve™ into pipe.

### Jointing procedure

Whichever type of Hep<sub>2</sub>O fitting is used, the same jointing procedure should be followed.



Photo 1.



Photo 2.



Photo 3.

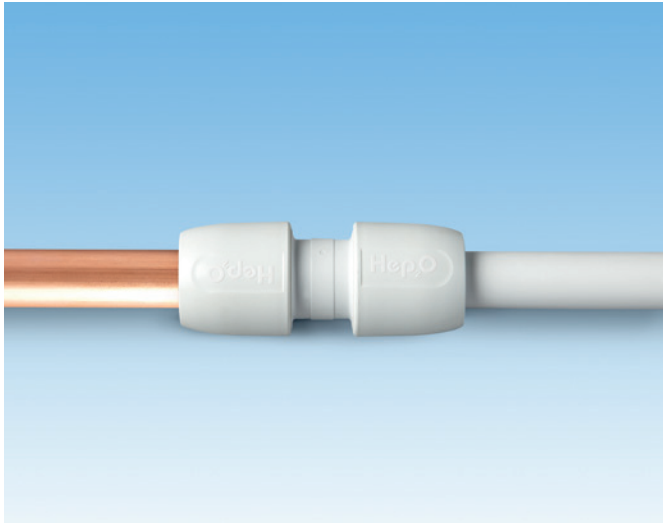


Photo 4.

1. Cut the pipe squarely at one of the '∧' marks using recommended pipe cutters and ensure the pipe end is free from burrs
2. Insert a Hep<sub>2</sub>O SmartSleeve™ pipe support sleeve into the pipe end
3. Push the pipe firmly into the fitting, then use Hep<sub>2</sub>O's unique In4Sure™ joint recognition technology to 'feel' if the pipe is fully inserted
4. Tug back on the pipe to ensure the grab-ring engages correctly and prevents the pipe withdrawing

### Joining copper pipe to Hep<sub>2</sub>O fittings

Hep<sub>2</sub>O fittings have been designed to form reliable joints with metric copper pipe which conforms to BS EN 1057 – R520.



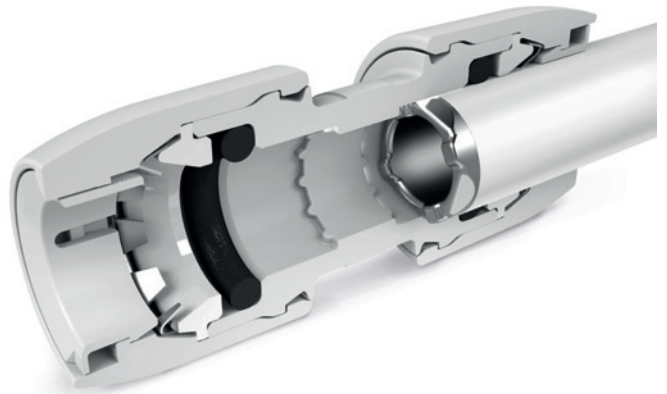
*Hep2O fittings are also compatible with copper pipe.*

1. Measure the pipe, allowing sufficient length for insertion into the fitting, and mark with a pencil
2. Cut the copper pipe with a wheel cutter
3. Carefully inspect the pipe ends for burrs or swarf
4. Push the pipe firmly into the fitting
5. Tug back on the pipe to ensure the grab-ring engages correctly and prevents the pipe withdrawing

### Checking the joint using In4Sure™ joint recognition technology

Follow normal procedure to establish the insertion depth of the pipe into the fitting as previously described.

In4Sure™ joint recognition technology then provides a further check by allowing you to ‘feel’ if the pipe is fully inserted.



*Cut-away showing In4Sure™ joint recognition technology.*

#### To use In4Sure™ joint recognition technology:

1. Hold the centre (fixed) part of the fitting in one hand
2. After inserting the appropriate pipe sleeve, push the pipe firmly into the fitting
3. While still pushing, rotate the pipe using a screwing action. If the pipe is fully inserted you will feel a ‘rumbling’ sensation as the profiled end of the SmartSleeve™ passes over the castellated seat inside the fitting
4. Pull back to check the joint integrity

This simple procedure is designed to give you the peace of mind that comes from knowing that the joint is good. You can also make a visual check by checking the next ‘^’ mark is level with the end of the fitting.

#### Note:

New pipe insert for copper providing joint recognition will be available soon.

# Hep<sub>2</sub>O

## Making connections

### Demounting joints using the Hep<sub>2</sub>O HepKey™ system

The HepKey Plus™ is colour-coded: **15 blue**, **22 purple** and **28mm orange**.



HepKey Plus™

#### To use HepKey Plus™:

1. Place the HepKey Plus™ around the pipe
2. Clip HepKey Plus™ over the fitting
3. In this position it depresses the inner release ring of the fitting
4. Withdraw the pipe from the fitting



Step 1.



Step 2.

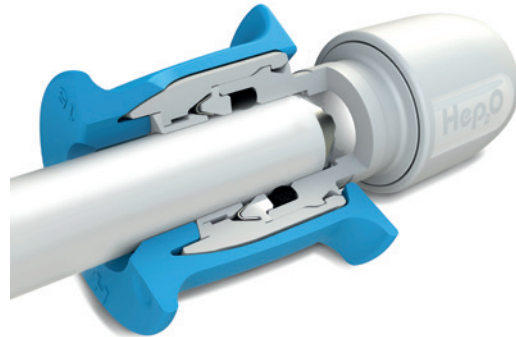


Step 3.



Step 4.

Demounting sequence using HepKey Plus™.



Cut-away drawing of HepKey Plus™.

#### Note:

Before re-using the fitting we recommend applying a small amount of Jointing Lubricant Spray (code HX200) to the O-ring seal inside the fitting.

#### Documentation

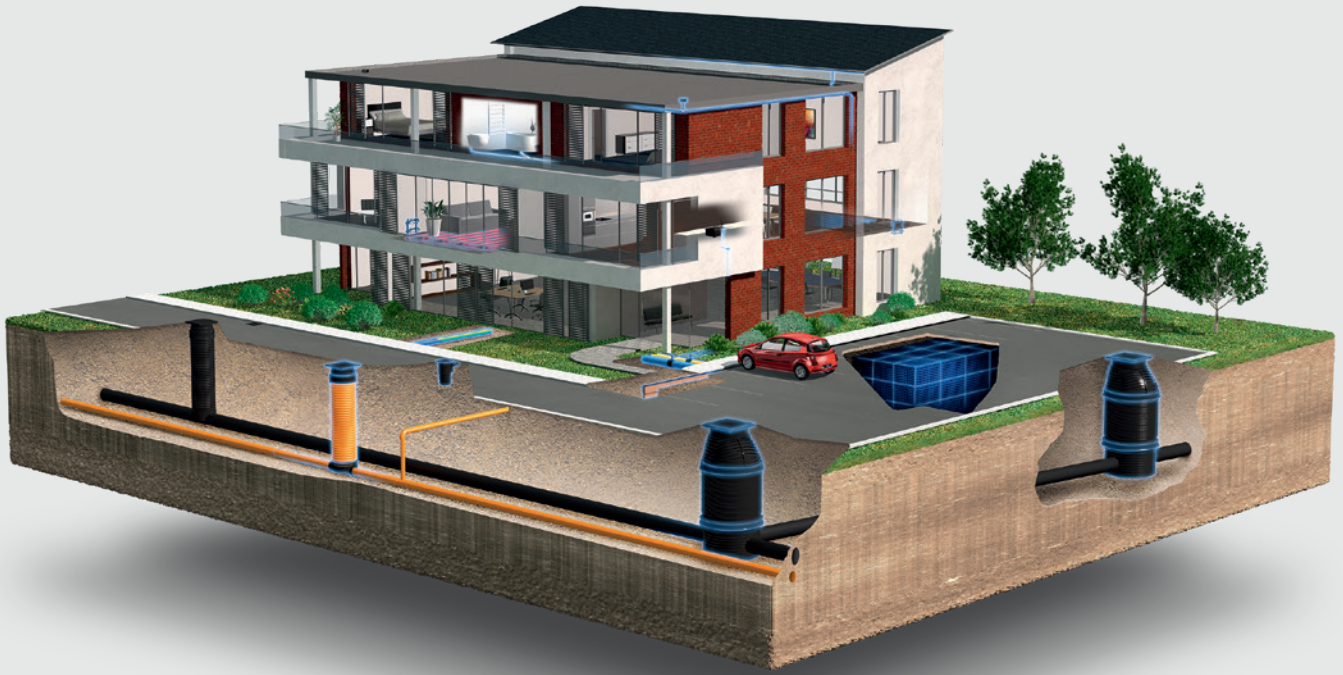
The following documentation on the Wavin Hep2O system is also available:

- 🔗 [Data sheet](#)
- 🔗 [Installer Guide](#)



# Discover our broad portfolio at [www.wavin.co.uk](http://www.wavin.co.uk)

Water management      Plumbing and heating      Waste water drainage  
Water and gas distribution      Datacom



Wavin is part of Orbia, a community of companies working together to tackle some of the world's most complex challenges. We are bound by a common purpose: To Advance Life Around the World.



**Wavin Middle East** | Tiffany Tower no. 2408W Cluster JLT Dubai / United Arab Emirates  
Tel: +97 14 276 6968 | E-mail: [wavin.me@wavin.com](mailto:wavin.me@wavin.com) | <https://wavin.com/en-ae>

Wavin operates a programme of continuous product development, and therefore reserves the right to modify or amend the specification of their products without notice. All information in this publication is given in good faith, and believed to be correct at the time of going to press. However, no responsibility can be accepted for any errors, omissions or incorrect assumptions.

© 2020 Wavin Limited reserves the right to make alterations without prior notice. Due to continuous product development, changes in technical specifications may change. Installation must comply with the installation instructions.

