



The perfect match

New Anthracite colour

DeepLine Semi-elliptical gutter range



New Anthracite colour

Wavin DeepLine Semi-elliptical gutter range

DeepLine Semi-elliptical gutter range

DeepLine is a semi-elliptical 113mm (4½") profiled gutter system with circular 68mm downpipe for domestic applications where a high capacity system is required. It can serve roof areas up to a maximum of 299m² with one downpipe.

Now available in Anthracite Grey (RAL 7016) to match windows, fascias and soffits that are becoming increasingly popular. See the product listing on the back page for the anthracite grey range.



Available in black and
New Anthracite Grey.

Wavin Rainwater gutter range profiles

Domestic



RoundLine
112mm (4½")
Half-round gutter



SquareLine
100mm (4")
Square section gutter



StormLine
111x76x97 (4¼x3¾")
Ogee profile gutter



DeepLine
113mm (4½")
Semi-elliptical gutter

Industrial & Commercial



SuperLine
125mm (5")
Half-round gutter



RoofLine
150mm (6")
Half-round gutter

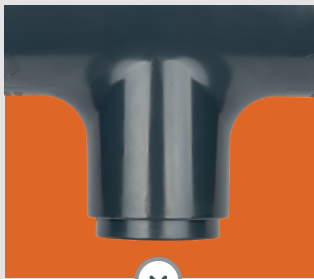
Key features and benefits

Wavin DeepLine Semi-elliptical gutter range

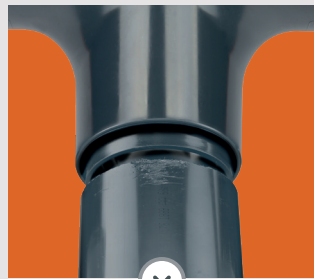
Designed to handle more rainwater

Design features

For outstanding flow performance DeepLine features a hydrodynamic outlet to handle more rainwater than similarly sized competitive systems. Using specialist seal technology our wide, retained seals provide a secure, watertight fixture with the flexibility to allow for thermal expansion. For an aesthetically pleasing finish, Wavin fittings have been engineered with concealed sockets to hide roughly cut downpipe ends. The system also features a 'Flexiclip' seal jointing mechanism, making it easy to connect gutter to fittings, with an expansion line and stopper for a secure and reliable installation.



Hydrodynamic outlet



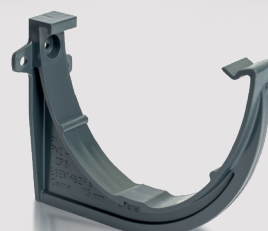
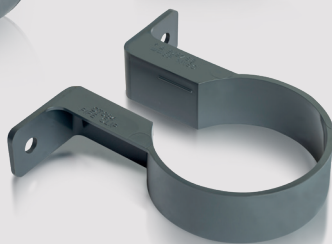
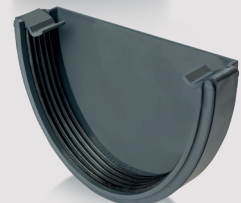
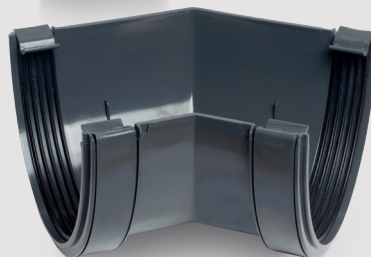
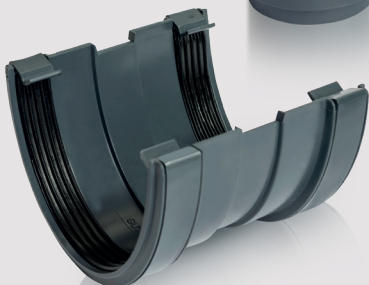
Concealed sockets



Expansion line and stopper



Wide, retained seals



DeepLine Semi-elliptical gutter range

RAL
7016

DeepLine Semi-elliptical gutter range

NEW COLOUR Anthracite Available Now



**RAL
7016**

For further information on Wavin Rainwater Systems including 'How to' videos and the Product, Design & Installation Guide visit www.wavin.ie

DeepLine	Description	Nom dia mm	Cat No.
	Gutter 4m	113	T9974AG ♡
	Gutter Union	113	T9909AG ♡
	Support Bracket	113	T9919AG ♡
	Running Outlet	113	T9906AG ♡
	Internal Stopend	113	T9910AG ♡
	External Stopend	113	T9911AG ♡
	Gutter Angle 90°	113	T9903AG ♡
	Gutter Angle 45°	113	T9904AG ♡
	Hopper	68	T0332AG ♡
	Pipe 2.75m	68	T0086AG ♡
	Pipe 4m	68	T0084AG ♡
	Pipe 5.5m	68	T0088AG ♡
	Pipe or Socket Bracket	68	T0033AG ♡
	Pipe Bracket	68	T0034AG ♡
	Socket Bracket	68	T0038AG ♡
	Pipe Connector	68	T0024AG ♡
	Offset Bend - Socket	68	T0025AG ♡
	Offset Bend - Spigot	68	T0026AG ♡
	Bend 87.5°	68	T0161AG ♡
	Pipe Shoe	68	T0037AG ♡
	Branch 67.5°	68	T0035AG ♡

Wavin Ireland Limited | Balbriggan | Co. Dublin | K32 K840 | www.wavin.ie



© 2021 Wavin Wavin reserves the right to make alterations without prior notice. Due to continuous product development, changes in technical specifications may change. Installation must comply with the installation instructions.