



Product guide

Wavin PP-R and PP-RCT Pipe Systems

Hot and Cold Water Systems
and Heating Applications



wavin

wavin

Content

Wavin Turkey PP-R/PP-RCT Systems	04
Our Purpose Action: Building Healthy, Sustainable Environments	05
Features and Advantages of PP-R/PP-RCT Systems	06-08
Wavin Turkey PP-R/PP-RCT Portfolio	09
Raw Material Properties and Technical Tables	10-11
Service Life of Systems	12
Wavin PPR/PPRCT Solid Wall Pipes & Fittings / Green	13-31
Wavin PPR/PPRCT Solid Wall Pipes & Fittings / White	33-51
Wavin PPR/PPRCT Solid Wall Pipes / Gray	53-71
Wavin PPR/PPRCT Welding Machines & Accessories	73-74

Wavin Turkey

PP-R/PP-RCT System



Wavin PP-R/PP-RCT Pipes

All mono layer and multilayer pipes made from TYPE 3 PP-R or TYPE 4 PP-RCT raw material are in sizes between 20 to 125mm. Different color options are available.

Wavin PP-R Fittings

All full plastic or metal inserted fittings are made of Type3 PPR raw material and can be used together with PP-R or PP-RCT pipes. Fitting sizes are between 20-125mm. Different color options are available.



Characteristics of the System

The Wavin PP-R/PP-RCT system is a polyfusion welded system made of polypropylene (PPR, PP-RCT). The system includes all-plastic and multi-layer pipes and a wide range of all-plastic or combined (plastic, metal) pipe fittings. Also includes a vast selection of accessories and assembly tools.

Application

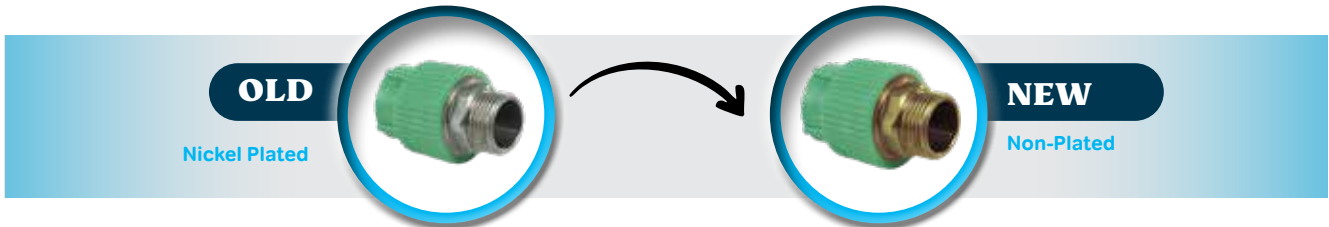
Wavin PP-R/PP-RCT can be used for piping in residential, administrative and cultural buildings as well as for industrial or agricultural piping. Wavin PP-R/PP-RCT is designed for transporting cold and hot water, for underfloor heating, and, if these assembly instructions are followed, even for central heating. Wavin PP-R/PP-RCT can also be used to transport air, cooling water and for air-conditioning. Using the piping's chemical resistance and other properties for transporting other liquids, gases or solids requires individual assessment for each use case. The manufacturer needs to assess the suitability of the piping if the hot water conducted through it is chemically disinfected. Permanent disinfection of hot water using chlorine dioxide shortens the life of the system and is therefore not recommended.

Product Portfolio and Features

- ⊙ Products are produced in Wavin's Turkey factory in Adana according to EN ISO 15874 standard.
- ⊙ Different type of pipes for different application areas...
Mono layer PP-R and PP-RCT Pipes for hot&cold water applications and Multilayer pipes for heating applications.
- ⊙ Multilayer pipes are made of PP-R and PP-RCT raw material with different middle layer fiber composition...
- ⊙ All plastic fittings are ready for perfect welding performances like coupler, bends, tees, manifolds, caps and clips.
- ⊙ Fittings with inserts are ready to use with metallic installation parts like valves, manifolds, unions, pumps and radiators.
- ⊙ Metal inserts which are in contact with drinking water are non-coated brass inserts.
- ⊙ Different color options for different markets: White, Green and Grey.
- ⊙ International certificates: DVGW, AENOR, CSTB, WRAS.

Building Healthy, Sustainable Environments

At Wavin, our global purpose is clear: **"Building Healthy, Sustainable Environments."** One of the key pillars in achieving this vision is ensuring a **"Safe and Efficient Water Supply."** We prioritize human health in every aspect of our **product portfolio**, offering **PPR pipes and fittings, multilayer composite pipes, and advanced plumbing systems** that guarantee durability, hygiene, and efficiency. With innovative **products** designed for reliability and sustainability, we are committed to building a healthier and more sustainable future.



In alignment with the European Drinking Water Directive and the latest hygienic standards for materials in contact with drinking water, **nickel coating is no longer permitted for tap water installations.** As a result, we have proactively removed nickel coating from our **PPR fittings with metal inserts** used in drinking water applications worldwide - ensuring safer, more compliant, and high-quality solutions for a healthier future.

The new PPR Fittings are non-coated brass alloy which is in the acceptable alloy list in 8th revision of 4MS 2017. Metal deactivators are used in the recipe in order to avoid any damage on plastic parts that may be caused by free metal ions from inserts. This application is valid for every color of fitting. PPR Fittings will continue to meet all performance requirements of EN ISO 15874-3 standard. You can reach to international product certifications via Wavin representative.



Versatile, Reliable, and Built to Perform

Wavin **PPR Pipes and Fittings** serve a wide spectrum of applications, from **potable water systems** to **heating, cooling, and industrial installations.** Engineered for durability and efficiency, our **PPR system** is a seamless combination of **high-quality pipes, full-plastic fittings, precision-engineered fittings with metal inserts, robust valves, and specialized tools.** Designed to meet the highest standards, it delivers **exceptional performance, long-term reliability, and superior safety** in every installation.

Extensive Product Range

Above Ground Product Groups:

- PPR&PPRCT Monolayer/ Multilayer pipes and fittings
- Flexible PERT Pipes for Radiator heating
- PEX/ PERT pipe coils for underfloor heating
- Underfloor Heating and Sentio control systems
- Tigris Press Fitting Systems
- Wavin AS+, SiTech+ and SiTech B1 low noise systems
- Wavin Quickstream Siphonic Roof Drainage System
- Standard PVC-U Soil & Waste Systems
- HepVO Waterless Trap

Below Ground Product Groups:

- Apollo PVC-O pipes
- PVC-U Drinking Water Pipes
- Wavin Plastic Manholes (Inspection Chambers) & Fittings
- Apollo O-PVC Pressure Pipes
- Oil & Grease Separators
- Road Gullies
- Aquacell ve Qbic plus attenuation and infiltration tanks

Features of PPRCT Pipes

- Wavin PP-RCT pipes are made from Type 4 raw material which is new generation polypropylene designed for hot and cold water systems.
- Better pipe with higher flow rate, improved pressure resistance and light weight.
- Improved pressure resistance at higher temperatures for long term period.
- Larger inner bore hole and delivers better flow rates
- Wavin PP-RCT can be used with all standard Wavin PP-R fittings
- Available in both monolayer and multilayer options in different colors.



Properties of PP-RCT Multilayer Pipe Options



	BASALT FIBER PP-RCT MULTILAYER PIPE	GLASS FIBER PP-RCT MULTILAYER PIPE
Layers	PPRCT/BASALT/PPRCT	PP-RCT/GLASS/ PP-RCT
Applied Standard	EN 15874-2	
Pressure resistance acc. to Application Classes	1/10, 2/10, 4/10, 5/8	
Pressure resistance @20°C, 50 years	Nominal 25bar	
Pipe Serie, SDR	S3,2 – SDR7,4	
Wall Thicknesses (mm)	20x2,8 – 25x3,5 – 32x4,4 – 40x5,5 – 50x6,9 -63x8,6 – 75x10. 90x12,3 – 110x15,1 – 125x17,1	
Linear Thermal Expansion (mm/mK)	0,035	

Why Wavin PPR Fittings Are Best in Class?



Advantages of PPR-PPRCT Pipe Systems

- ① Durable, robust and rigid system
- ① Lightweight products, easy to carry or install. Light bracketing.
- ① Simple tools and easy installation.
- ① Trusted welding connection, no seal. Safe system.
- ① No corrosion risk and high resistance for chemicals.
- ① High temperature resistance: 95°C short term water temperature.
- ① Long service life. 50 years and more...
- ① Rich product portfolio and high number of fittings due to flexibility of production.
- ① Design freedom for engineers and installers according to enriched portfolio.
- ① High contribution to the circular economy with ease of recycle.
- ① Cost effective performance product.
- ① No bore reduction – Less pressure losses.
- ① Most widely used plastic H&C system all over the world.

Additional Advantages of Multilayer Piping System

All pipes will be extended together with temperatures differences. But the thermal expansion of the pipes will be different according to pipe composition. Thanks to multilayer pipes, pipe expansion can be easily limited.

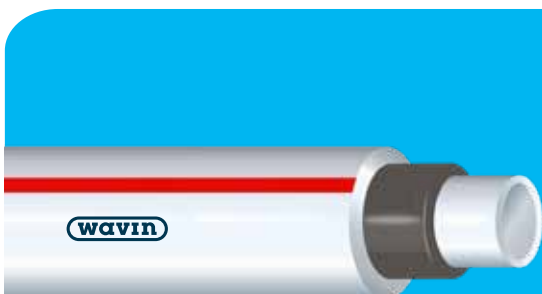
Multilayer pipes are made of three layer. PP-R or PP-RCT on both inner and outer layer and a special compound of material in the middle of the pipe. This middle layer brings less expansion property to the pipe. Multilayer pipes deliver 3x times better thermal expansion.

“Compound reinforcement brings new features to the pipe.”



Glass Fiber Reinforced Multilayer Pipe

- ① High tensile strength
- ① Dimensional stability
- ① Good thermal conductivity
- ① Readily material for production
- ① Easy to install, no shaving



Basalt Fiber Reinforced Multilayer Pipe

- ① Same features with glass fiber and more...
- ① Basalt fiber production is environmentally friendly and energy consumption is less
- ① Natural, produced from basalt stones and 100% recyclable
- ① Higher impact resistance with lower fiber amount
- ① Unique offering from Wavin, easy to differentiate

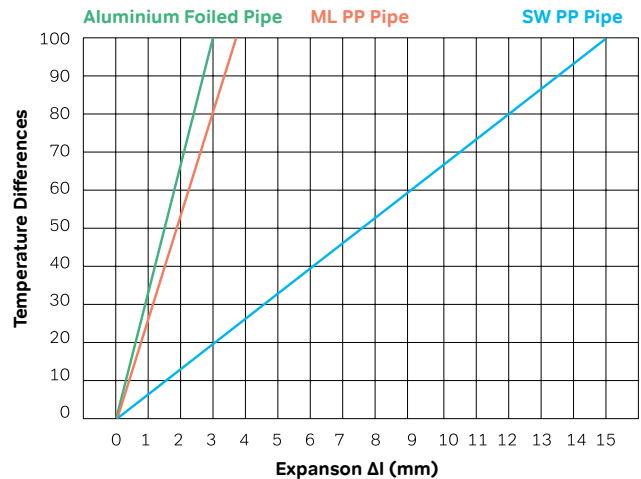
Features of Glass/ Basalt Fiber Reinforced Multilayer Composite Pipes

- ① Consist of PPR/PPRCT inner and outer layers and a special mixture of Glass Fiber (GF) or Basalt Fiber (BF) in middle layer.
- ② Middle layer reduces the pipes thermal extension. Besides multilayer pipes can provide all performance features which solid wall pipe have. (Table 2)
- ③ Multilayer pipes have similar thermal expansion coefficient with aluminum stabil pipes have. (Graphic 1)
- ④ The mixture of Polypropylene and Glass or Basalt Fiber minimizes elongation from heat. That is why installation require less bracketing and fixing points.
- ⑤ Alternative solution to conventional pipe systems suitable for e.g., cooling and air conditioning systems, sanitary installations, industrial pipeline construction and rainwater utilization

Why choose Wavin Glass or Basalt Fiber Reinforced Multilayer Composite Pipes?

- 1 Easy to Install
- 2 Time-efficient
- 3 Cost-Efficient
- 4 Less Expansion
- 5 Compliance to European Standards
- 6 Reliable Technology High Quality

Graphic 1: Elongation of various PP pipes








Complied Standards	DIN 8077/8078, EN 15874 2, TS 13715			
Pressure Class	SDR 7,4	SDR 6	SDR 9	SDR 11
Diameter Range	20-125			

Advantages of Multilayer Composite Pipes Pipes:

- ① ML pipes elongates less during the heat changes
- ② Unlike aluminium foiled pipes; there is no need to shave the end of the pipe. The welding process should begin directly. This provides ease of installation.
- ③ Can be easily used for hot water systems. It is a lighter product compared to metal pipes. Therefore, it is easy to carry and install. The linear coefficient of thermal expansion value is small. (0,035mm/WmK). Less bracketing is necessary compared to solid wall pipes.
- ④ Due to the glass fiber reinforced layer, thermal conductivity is smaller than solid wall pipe. That is why less insulation will be enough.
- ⑤ It does not cause a change in the color, smell or the taste of water. It has a hygienic structure.

Wavin Turkey PP-R/PP-RCT System

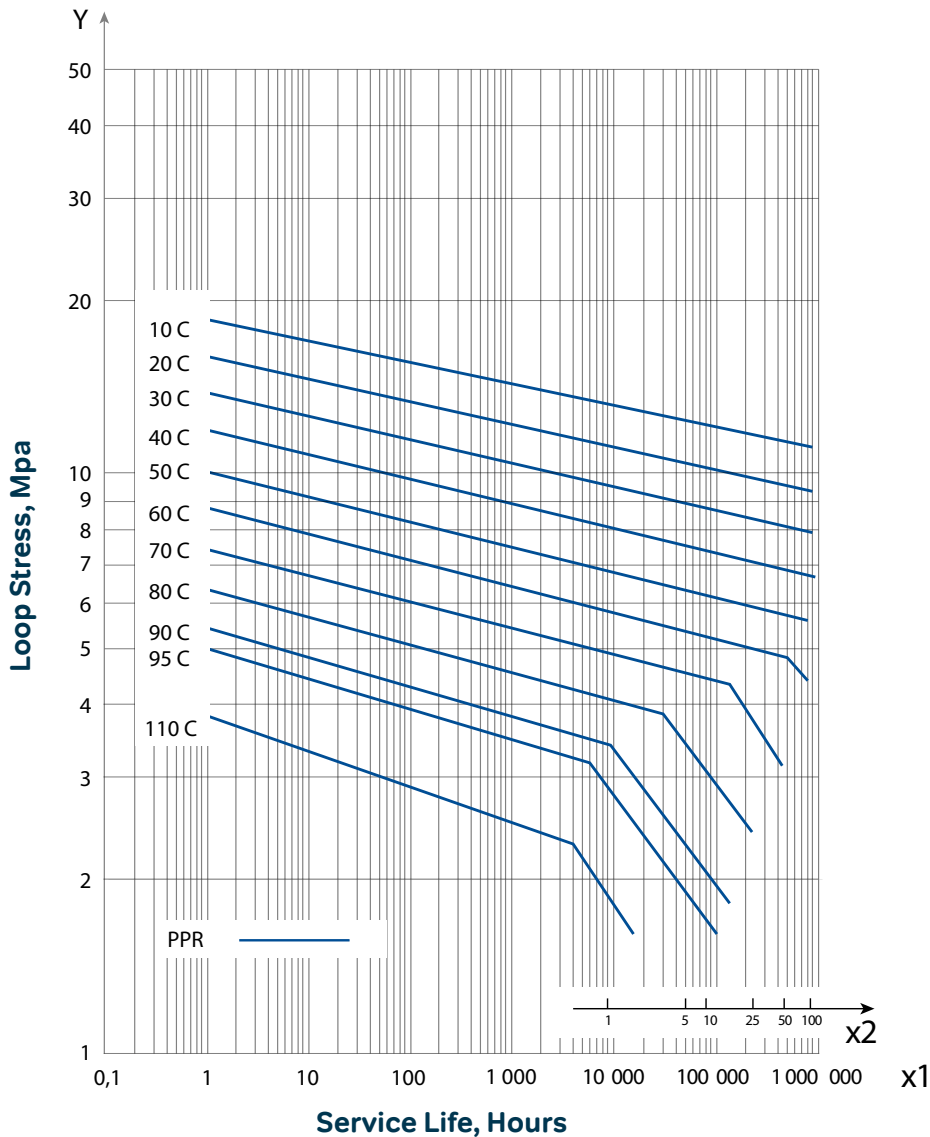
	Wavin PP-R Monolayer			Wavin PP-RCT Monolayer	Wavin PP-R Glass Fiber Multilayer		Wavin PP-RCT Glass Fiber Multilayer	Wavin PP-RCT Basalt Fiber Multilayer	
									
Dimensions	Ø20-125			Ø20-125	Ø20-125		Ø20-125	Ø20-125	
Size Group SDR	S5 SDR11	s3,2 SDR7,4	s2,5 SDR6	S4 SDR9	s3,2 SDR7,4	s2,5 SDR6	S3,2 SDR7,4	S4 SDR9	S3,2 SDR7,4
Nominal Pressure (bars)	PN12,5	PN20	PN25	PN22	PN20	PN25	PN25	PN22	PN25
Operating Conditions (bars)* @20°C, 50 years	12,9	20,4	25,7	23,1	20,4	25,7	29,2	23,1	29,2
Operating Conditions (bars)* @60°C, 50 years	6,4	10,2	12,9	12,2	10,2	12,9	15,4	12,2	15,4
Material	Type 3 Monolayer PP-R			Type 4 Monolayer PP-RCT	Type 3 Multilayer PP-R PP-R/Glass Fiber/PP-R		Type 4 Multilayer PP-RCT PP-RCT/Glass Fiber/PP-RCT	Type 4 Multilayer PP-RCT PP-RCT/Basalt Fiber/PP-RCT	
Application Areas (preferred)	Cold Water			Cold Water	Hot Water		Hot Water	Hot Water	
Thermal Expansion Coefficient (mm/mK)	0,15			0,15	0,035		0,035	0,035	

*Operating condition ratings are belongs to tables from DIN 8077 Standard. Safety factor for PPR: 1,5 and PPRCT:1,25.

Physical And Mechanical Properties Of Raw Material - PP-R

Properties	Testing Conditions	Unit	Testing Method	Result
MRS Classification	20°C, extrapolation 50 years	MPa	ISO 9080	10
Density	23°C	g/cm ³	ISO 1183	0,89 - 0,91
Melting Flow Index MFI	190°C, 5 kg	g/10dk g/10min	ISO 1133	0,4 - 0,6
	230°C, 2,16 kg			0,2 - 0,5
	230°C, 5 kg			0,8 - 1,3
Tensile Stress at Yield	23°C, 50 mm/dk 50 mm/min	MPa	ISO 527	23 - 28
Tensile Strain at Yield	23°C, 50 mm/dk 50 mm/min	%	ISO 527	min %10
Elasticity Modulus	23°C, 1 mm/dk 1 mm/min	MPa	ISO 527	800 - 1000
Charpy Notched Impact Strength	0°C	kJ/m ²	ISO 179	>3,5
Thermal Conductivity	-	W/(m K)	DIN 52612	0,24
Coefficient of Thermal Expansion (0°C/90°C)	-	1/K	DIN 53752	1,5*10 ⁻⁴

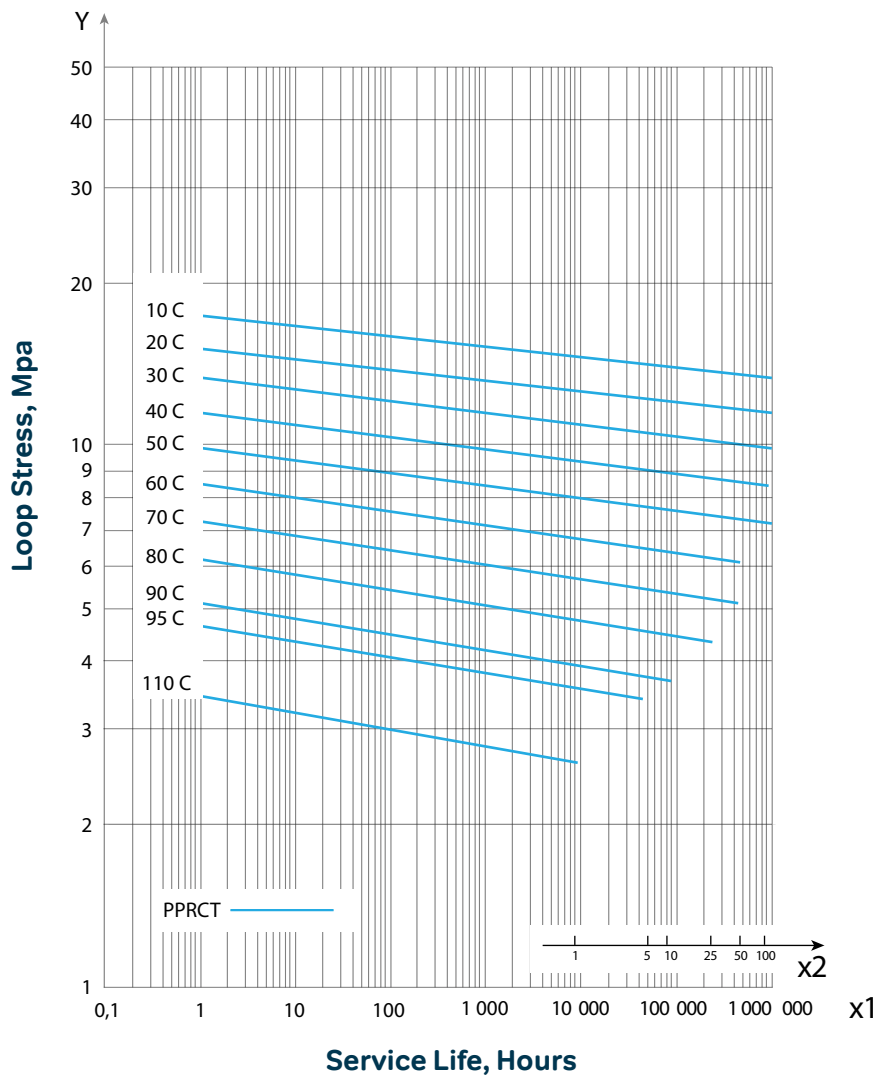
Isothermal Mechanical Strength Graphic For PP-R



Physical And Mechanical Properties Of Raw Material - PP-RCT

Properties	Testing Conditions	Unit	Testing Method	Result
MRS Classification	20°C, extrapolation 50 years	MPa	ISO 9080	11,2
CRS Classification	70°C, extrapolation 50 years	MPa	ISO 9080	5,3
Density	23°C	g/cm ³	ISO 1183	0,89 - 0,91
Melting Flow Index MFI	190°C, 5 kg	g/10dk g/10min	ISO 1133	0,4 - 0,6
	230°C, 2,16 kg			0,2 - 0,5
	230°C, 5 kg			0,8 - 1,3
Tensile Stress at Yield	23°C, 50 mm/dk 50 mm/min	MPa	ISO 527	23 - 28
Tensile Strain at Yield	23°C, 50 mm/dk 50 mm/min	%	ISO 527	min %10
Elasticity Modulus	23°C, 1 mm/dk 1 mm/min	MPa	ISO 179	800 - 900
Charpy Notched Impact Strength	0°C	kJ/m ²	ISO 179	9,5
Izod Notched Impact Strength	0°C	kJ/m ²	DIN 52612	17
Thermal Conductivity	-	W/(m K)	DIN 52612	0,24
Coefficient of Thermal Expansion (0°C/90°C)	-	1/K	DIN 53752	1,5*10 ⁻⁴

Isothermal Mechanical Strength Graphic For PP-RCT

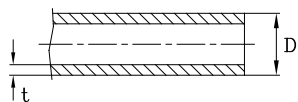


Operating Parameters For PP-R & PP-RCT Pipes

Operating Temperature °C	Service Life Year	PP-R Solid Wall Pipes & PP-R Multilayer Pipes			PP-RCT Solid Wall Pipes & PP-RCT Multilayer Pipes		
		Allowable Operating Pressure (bar) Safety Factor (SF)= 1,5			Allowable Operating Pressure (bar) Safety Factor (SF)= 1,25		
		s5 SDR 11 PN 12,5	s3,2 SDR 7,4 PN 20	s2,5 SDR 6 PN 25	s5 SDR 11 PN 18	s4 SDR 9 PN 22	s3,2 SDR 7,4 PN 25
10	1	17,50	27,80	35,10	22,80	28,80	36,20
	5	16,50	26,20	33,00	22,10	27,90	35,10
	10	16,10	25,60	32,20	21,90	27,50	34,70
	25	15,60	24,70	31,10	21,50	27,10	34,10
	50	15,20	24,10	30,30	21,20	26,70	33,60
	100	14,80	23,50	29,60	20,90	26,30	33,20
20	1	15,00	23,70	29,90	19,90	25,00	31,50
	5	14,10	22,30	28,10	19,30	24,20	30,50
	10	13,70	21,70	27,40	19,00	23,90	30,10
	25	13,20	21,00	26,40	18,60	23,50	29,60
	50	12,90	20,40	25,70	18,40	23,10	29,20
	100	12,50	19,90	25,00	18,10	22,80	28,80
30	1	12,70	20,20	25,40	17,20	21,70	27,30
	5	11,90	18,90	23,80	16,60	20,90	26,40
	10	11,60	18,40	23,20	16,40	20,60	26,00
	25	11,20	17,70	22,30	16,10	20,20	25,50
	50	10,90	17,20	21,70	15,80	19,90	25,10
	100	10,60	16,80	21,10	15,60	19,70	24,80
40	1	10,80	17,10	21,60	14,80	18,60	23,50
	5	10,10	16,00	20,20	14,30	18,00	22,60
	10	9,80	15,50	19,60	14,10	17,70	22,30
	25	9,40	15,00	18,80	13,80	17,30	21,80
	50	9,20	14,50	18,30	13,60	17,10	21,50
	100	8,90	14,10	17,80	13,30	16,80	21,20
50	1	9,10	14,50	18,20	12,60	15,90	20,10
	5	8,50	13,50	17,00	12,20	15,30	19,30
	10	8,20	13,10	16,50	12,00	15,10	19,00
	25	7,90	12,60	15,90	11,70	14,70	18,60
	50	7,70	12,20	15,40	11,50	14,50	18,30
	100	7,50	11,80	14,90	11,30	14,30	18,00
60	1	7,70	12,20	15,40	10,70	13,50	17,00
	5	7,10	11,30	14,30	10,30	13,00	16,30
	10	6,90	11,00	13,90	10,10	12,70	16,00
	25	6,60	10,50	13,30	9,90	12,40	15,70
	50	6,40	10,20	12,90	9,70	12,20	15,40
70	1	6,50	10,30	12,90	9,00	11,30	14,30
	5	6,00	9,50	12,00	8,60	10,90	13,70
	10	5,80	9,20	11,60	8,50	10,70	13,50
	25	5,00	8,00	10,00	8,30	10,40	13,10
	50	4,20	6,70	8,50	8,10	10,20	12,90
80	1	5,40	8,60	10,80	7,50	9,50	11,90
	5	4,80	7,60	9,60	7,20	9,00	11,40
	10	4,00	6,40	8,10	7,00	8,90	11,20
	25	3,20	5,10	6,50	6,90	8,60	10,90
95	1	3,80	6,10	7,60	5,60	7,10	8,90
	5	2,60	4,10	5,20	5,30	6,70	8,50
	10	2,20	3,40	4,30	5,20	6,60	8,30

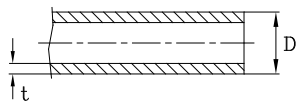
Based on DIN8077 Standard

Wavin PPR/PPRCT Solid Wall Pipes



PPR Solid Wall Pipe (L=4m)

DN	t(mm) PN 12,5 (SF:1,5)	t(mm) PN 20 (SF:1,5)	t(mm) PN 25 (SF:1,5)	S5 SDR11 PN 12,5	S 3,2 SDR 7,4 PN 20	S 2,5 SDR 6 PN 25	Bundle
20	1,9	2,8	3,4	3032849	3040251	3033265	25
25	2,3	3,5	4,2	3032850	3040252	3033266	20
32	2,9	4,4	5,4	3032694	3040253	3033203	10
40	3,7	5,5	6,7	3032851	3040254	3033267	5
50	4,6	6,9	8,3	3032852	3040255	3033268	5
63	5,8	8,6	10,5	3032853	3040256	3032858	3
75	6,8	10,3	12,5	3033218	3040257	3033221	2
90	8,2	12,3	15,0	3033219	3040258	3032775	2
110	10,0	15,1	18,3	3032695	3040259	3033204	1
125	11,4	17,1	20,8	3032696	3040260	3032699	1



PPRCT Solid Wall Pipe (L=4m)

DN	t (mm) PN 22 (SF:1,25)	s 4 SDR 9 PN 22	Bundle
20	2,3	3065542	25
25	2,8	3065543	20
32	3,6	3065544	10
40	4,5	3065545	5
50	5,6	3065546	5
63	7,1	3065547	3
75	8,4	3065548	2
90	10,1	3065549	2
110	12,3	3065550	1
125	14	3065551	1

Wavin PPR & PPRCT

Best in Class
Hot & Cold Systems



Wavin PPR/PPRCT Multilayer Pipes



PPR Glass Fiber Multilayer Pipe (L=4m)

DN	t(mm) PN20 (SF:1,5)	t(mm) PN25 (SF:1,5)	s 3,2 SDR 7,4 PN 20	s 2,5 SDR 6 PN 25	Bundle
20	2.8	3.4	3052128	3052129	25
25	3.5	4.2	3052130	3052131	20
32	4.4	5.4	3052132	3052133	10
40	5.5	6.7	3052134	3052135	5
50	6.9	8.3	3082445	3052136	5
63	8.6	10.5	3082444	3052137	3
75	10.3	12.5	3082443	3072615	2
90	12.3	15.0	3082442	3072616	2
110	15.1	18.3	3082441	3081227	1
125	17.1	20.8	3082440	3052138	1

PPRCT Glass Fiber Multilayer Pipe (L=4m)



DN	t(mm) PN 25 (SF:1,25)	s 3,2 SDR 7,4 PN 25	Bundle
20	2.8	3094420	25
25	3.5	3094425	20
32	4.4	3094428	10
40	5.5	3094429	5
50	6.9	3094427	5
63	8.6	3094426	3
75	10.3	3094424	2
90	12.3	3094423	2
110	15.1	3094422	1
125	17.1	3094421	1

PPRCT Basalt Fiber Multilayer Pipe (L=4m)*



DN	t(mm) PN 25 (SF:1,25)	t(mm) PN 22 (SF:1,25)	S 3,2 SDR 7,4 PN 25	S 4 SDR 9 PN 22	Bundle
20	2,8		3041083		25
25	3,5		3041085		15
32	4,4		3041086		10
40	5,5		3041087		6
50	6,9		3041088		4
63	8,6		3041090		3
75		8,4		3041091	2
90		10,1		3041092	1
110		12,3		3041093	1
125		14		3041094	1

*Green Basalt ML pipes are light grey color and produced in CZ factory.

Wavin PPR Fittings

Socket



DN	Sap Code	Bag	Box	d (mm)	L1(min.) (mm)	D (mm)	L (mm)	k (mm)
20	3033270	50	600	19,50	14,50	28	33	4
25	3033271	40	400	24,50	16,00	34	37	4
32	3033272	20	240	31,50	18,00	42,5	41	4
40	3033273	15	120	39,40	20,50	53	46	4,5
50	3033274	10	100	49,40	23,50	66	52	4,5
63	3032865	6	48	62,50	27,50	83	60	4,5
75	3032866	6	30	74,70	30,00	100	65	5
90	3032776	1	24	89,20	33,00	120	71,5	6
110	3033275	1	10	109,00	37,00	146	80	6
125	3033276	1	10	124,60	40,00	167	86	6

Elbow (90°)



DN	Sap Code	Bag	Box	d (mm)	L1(min.) (mm)	D (mm)	A (mm)
20	3032870	50	450	19,5	14,5	28	25,5
25	3033222	50	300	24,5	16	33	29,5
32	3033278	25	150	31,5	18	43,5	35
40	3033279	10	80	39,4	20,5	53	41,5
50	3033280	5	40	49,4	23,5	67	50
63	3032874	5	25	62,5	27,5	83,5	60
75	3033281	3	15	74,7	30	100	68
90	3033282	1	8	89,2	33	120	78,5
110	3033283	1	4	109	37	147	92,5
125	3033284	1	4	124,6	40	168	102

Elbow (45°)

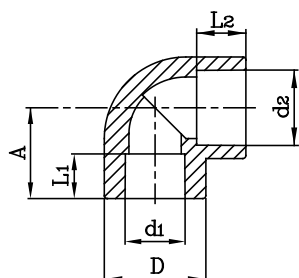


DN	Sap Code	Bag	Box	d (mm)	L1(min.) (mm)	D (mm)	A (mm)
20	3033286	50	400	19,5	14,5	26,5	20
25	3032881	50	250	24,5	16	33,5	22
32	3033287	20	120	31,5	18	43,5	32
40	3033288	10	100	39,4	20,5	52,5	31
50	3033289	8	48	49,4	23,5	68	35
63	3032780	4	24	62,5	27,5	84	42,5
75	3032885	3	18	74,7	30	100	47

Elbow with Reducer



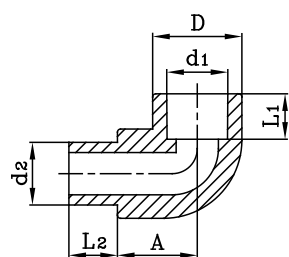
DN	Sap Code	Bag	Box	d1 (mm)	L1(min.) (mm)	d2 (mm)	L2(min.) (mm)	D (mm)	A
25-20	3051587	30	300	19,50	14,50	25	16	3	29.5



Elbow (Female-Male) 90°



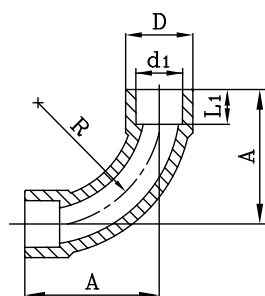
DN	Sap Code	Bag	Box	d1 (mm)	L1(min.) (mm)	d2 (mm)	L2(min.) (mm)	D (mm)	A
20	3033285	50	500	19,5	14,5	20	15	28,5	25
25	3033223	30	300	24,5	16	25	15,5	33,5	29,5
25/20	3033224	30	300	24,5	16	20	15,5	33	29,5



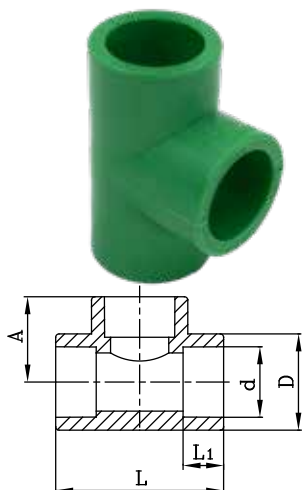
Bend



DN	Sap Code	Bag	Box	d1 (mm)	L1(min.) (mm)	D (mm)	L2(min.) (mm)	L (mm)
25	3079934	20	180	24,5	16	35	63,5	88

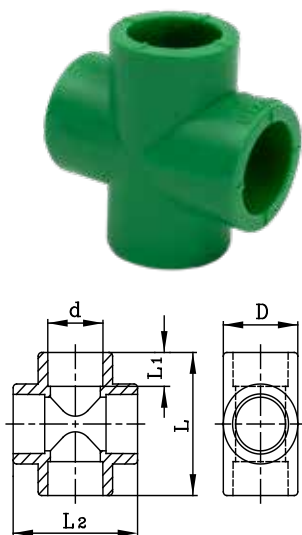


Tee



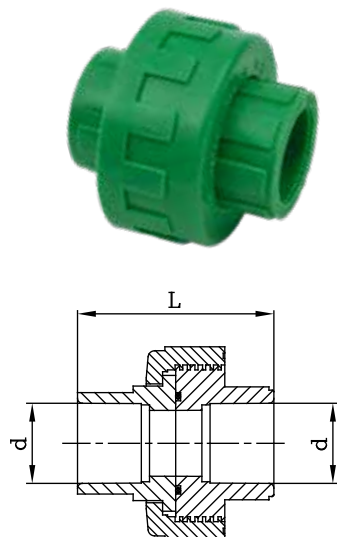
DN	Sap Code	Bag	Box	d (mm)	L1(min.) (mm)	D (mm)	L (mm)	A (mm)
20	3033290	30	240	19,5	14,5	27	51,5	26
25	3033291	25	150	24,5	16	33	63	30
32	3032889	15	90	31,5	18	43	72	36
40	3032890	5	50	39,4	20,5	53	85	43,5
50	3033292	4	32	49,4	23,5	66,5	100	50
63	3033293	3	18	62,5	27,5	84,5	119,5	60
75	3033294	2	12	74,7	30	100	130	73
90	3033295	1	6	89,2	33	120	158	79
110	3033296	1	4	109	37	146	186	93
125	3033297	1	3	124,6	40	167	208	103,5

Cross Tee



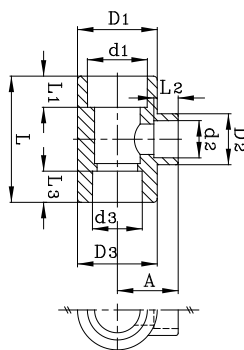
DN	Sap Code	Bag	Box	d (mm)	L1(min.) (mm)	D (mm)	L (mm)	L2 (mm)
20	3033319	25	200	19,5	14,5	26,5	51	51
25	3033320	15	150	24,5	16	33	60	60
32	3032925	10	90	31,5	18	42,5	70	70
40	3033321	5	50	39,4	20,5	53	84	84
50	3033225	3	24	49,4	23,5	66,5	103,5	103,5

Manchon Union PN 10



DN	Sap Code	Bag	Box	d (mm)	L (mm)
20	3040972	15	180	19,5	41
25	3033341	10	120	24,5	51
32	3033342	5	60	31,5	63
40	3033343	5	40	39,4	71
50	3032951	4	32	49,4	74

Unequal Tee

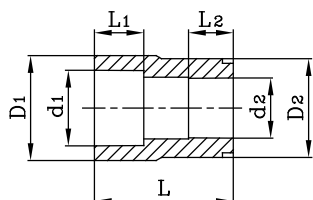


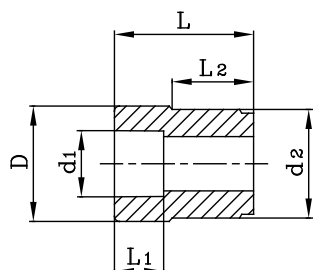
D1	D2	D3	Sap Code	Bag	Box	d1 (mm)	L1(min.) (mm)	D1 (mm)	d2 (mm)	L2(min.) (mm)	D2 (mm)	d3 (mm)	L3(min.) (mm)	D3 (mm)	L (mm)	A (mm)
20x25x20			3040002	25	150	19,5	14,5	33	24,5	16	33,5	19,5	14,5	33	65	37,5
25x20x20			3039999	25	150	24,5	16	35	19,5	14,5	28	19,5	14,5	28	53	27,5
25x20x25			3040000	25	150	24,5	16	33	19,5	14,5	26,5	24,5	16	33	55	28,5
25x25x20			3033298	25	150	24,5	18	33,5	24,5	16	33,5	19,5	14,5	33,5	65	35,5
32x20x20			3051556	15	90	31,5	18	42,5	19,5	14,5	42,5	19,5	14,5	42,5	73,5	40,5
32x20x25			3045670	15	90	31,5	18	43	19,5	14,5	42,5	24,5	16	43	73,5	40,5
32x20x32			3033300	15	90	31,5	18	42,5	19,5	14,5	27	31,5	18	42,5	60	31,5
32x25x20			3045671	15	90	31,5	18	42,5	24,5	16	42,5	19,5	14,5	42,5	73,5	40
32x25x25			3033302	15	90	31,5	18	43	24,5	16	43	24,5	16	43	66	40
32x25x32			3033301	15	90	31,5	18	43	24,5	16	34	31,5	18	43	103	35
32x50x32			3032902	4	32	31,5	18	65	49,4	23,5	65	31,5	18	65	65,5	54,5
40x20x40			3032903	5	50	39,4	20,5	53	19,5	14,5	33	39,4	20,5	53	70	38,5
40x25x40			3033303	5	50	39,4	20,5	53	24,5	16	33	39,4	20,5	53	70	38,5
40x32x40			3033304	5	50	39,4	20,5	53	31,5	18	43	39,4	20,5	53	80	41
40x50x40			3033305	4	32	39,4	20,5	66	49,4	23,5	65,5	39,4	20,5	66	103	54,5
50x20x50			3033307	4	32	49,4	23,5	66,5	19,5	14,5	33	49,4	23,5	66,5	85	44
50x25x50			3033308	4	32	49,4	23,5	66,5	24,5	16	33	49,4	23,5	66,5	85	44
50x32x32			3045674	4	32	49,4	23,5	66,5	31,5	18	65,5	31,5	18	66,5	103	55,5
50x32x40			3045676	5	50	49,4	23,5	66	31,5	18	65,5	39,4	20,5	66	103	54,5
50x32x50			3033309	4	32	49,4	23,5	65	31,5	18	51	49,4	23,5	65	90	49,5
50x40x32			3045675	4	32	49,4	23,5	66,5	39,4	20,5	66	31,5	18	66,5	103	55,5
50x40x40			3045672	4	32	49,4	23,5	66	39,4	20,5	65,5	39,4	20,5	66	104	55,5
50x40x50			3033306	4	32	49,4	23,5	65	39,4	20,5	52	49,4	23,5	65	90	49,5
50x50x32			3045677	4	32	49,4	23,5	66	49,4	23,5	66	31,5	18	66	103,5	55
50x50x40			3045673	4	32	49,4	23,5	65,5	49,4	23,5	65	39,4	20,5	65,5	103,5	54,5
63x20x63			3041940	2	20	62,5	27,5	84	19,5	14,5	26,5	62,5	27,5	84	80	52
63x25x63			3033310	2	20	62,5	27,5	84	24,5	16	33	62,5	27,5	84	85	52
63x32x63			3033311	2	20	62,5	27,5	84	31,5	18	42,5	62,5	27,5	84	91	52
63x40x63			3032913	2	20	62,5	27,5	83,5	39,4	20,5	53	62,5	27,5	83,5	101	54
63x50x63			3033312	2	20	62,5	27,5	83,5	49,4	23,5	66	62,5	27,5	83,5	112	57
75x20x75			3032915	1	12	74,7	30	100	19,5	14,5	33	74,7	30	100	130	60
75x25x75			3033313	1	12	74,7	30	100	24,5	16	33	74,7	30	100	130	60
75x32x75			3033314	1	12	74,7	30	100	31,5	18	53	74,7	30	100	130	60
75x40x75			3033315	1	12	74,7	30	100	39,4	20,5	53	74,7	30	100	130	60
75x50x75			3032919	1	12	74,7	30	100	49,4	23,5	83,5	74,7	30	100	130	68
75x63x75			3033316	1	12	74,7	30	100	62,5	27,5	83,5	74,7	30	100	130	68
90x75x90			3033317	1	8	89,2	33	120	74,7	30	120	89,2	33	120	158	79
110x90x110			3033318	1	4	109	37	146	89,2	33	146	109	37	146	186	93



Female-Female Reducer

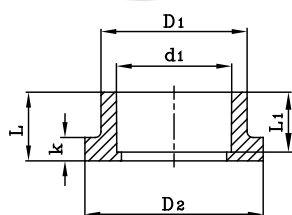
DN	Sap Code	Bag	Box	d1 (mm)	L1(min.) (mm)	d2 (mm)	L2(min.) (mm)	D1 (mm)	D2 (mm)	L (mm)
25/20	3033228	30	300	24,5	16	19,5	14,5	35	32,5	39
32/20	3051568	25	250	31,5	18	19,5	14,5	43	41	48,5
32/25	3032946	25	250	31,5	18	24,5	16	43	41	48,5





Female-Male Reducer

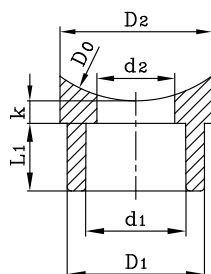
DN	Sap Code	Bag	Box	d1 (mm)	L1(min.) (mm)	d2 (mm)	L2(min.) (mm)	D (mm)	L (mm)
25/20	3040003	40	560	19,5	14,5	25	18	29	39
32/20	3033227	30	300	19,5	14,5	32	13,5	35	39
32/25	3033226	30	300	24,5	16	32	15,5	35	39,5
40/20	3033323	30	240	19,5	14,5	40	25	30,5	47,5
40/25	3033324	30	240	24,5	16	40	24,5	35,5	48
40/32	3033325	20	200	31,5	18	40	27,5	42,5	47
50/20	3033326	20	200	19,5	14,5	50	23,5	29	48
50/25	3033327	25	200	24,5	16	50	23,5	34	49,5
50/32	3033328	15	150	31,5	18	50	23,5	42,5	47,5
50/40	3033329	10	120	39,4	20,5	50	24,5	53,5	48
63/25	3033330	10	120	24,5	16	63	28	34,5	56,5
63/32	3033331	10	120	31,5	18	63	28,5	43,5	57,5
63/40	3033332	5	80	39,4	20,5	63	28	63	53
63/50	3033333	5	60	49,4	23,5	63	28	67	53
75/50	3033334	5	50	49,4	23,5	75	31	75,5	61,5
75/63	3033335	5	40	62,5	27,5	75	26	84,5	67
90/63	3033336	4	36	62,5	27,5	90	28	91	76,5
90/75	3032784	2	24	74,7	30	90	33	98	81,5
110/63	3033337	1	18	62,5	27,5	110	32,5	111	88
110/75	3033338	1	18	74,7	30	110	32,5	111	91,5
110/90	3040976	1	18	89,2	33	110	32,5	119	93,5
125/110	3033339	1	13	109	37	125	37	147	102



Flange Adaptor*

DN	Sap Code	Bag	Box	d (mm)	L1(min.) (mm)	D1 (mm)	D2 (mm)	L (mm)	K (mm)
40	3033344	25	250	39,4	20,5	50,5	62	24	8,5
50	3033345	15	150	49,4	23,5	61,5	73,5	27	8,5
63	3033346	10	80	62,5	27,5	77	90,5	31,5	8
75	3033347	4	36	74,7	30	90,5	106	38	16
90	3033348	4	36	89,2	33	109	124,5	42,5	18
110	3033349	2	20	109	37	132	150,5	50	21
125	3033350	1	12	124,6	40	164	185	62	20

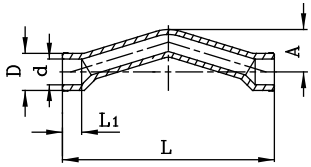
* Use same diameter of flange for 40-90mm adaptors. Use 125mm flange for 110mm adaptor and 160mm flange for 125mm adaptor.



Saddle

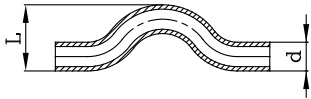
DN	Sap Code	Bag	Box	d0 (mm)	d1 (mm)	L1(min.) (mm)	d2 (mm)	D1 (mm)	D2 (mm)	k (mm)
63/20	3033354	50	600	63	19,5	14,5	17	28,5	37	6
63/25	3033355	50	600	75	19,5	14,5	17	28,5	37	6
75/20	3033356	50	600	90	19,5	14,5	17	28,5	37	6
75/25	3033357	50	600	110	19,5	14,5	17	28,5	37	6
90/20	3033358	50	600	63	24,5	16	19	33,5	37,5	6
90/25	3033359	50	600	75	24,5	16	19	33,5	37,5	6
110/20	3033360	50	600	90	24,5	16	19	33,5	37,5	6
110/25	3033361	50	600	110	24,5	16	19	33,5	37,5	6

Crossover Bridge



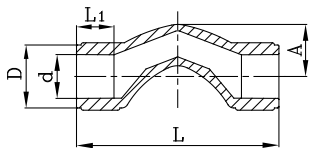
DN	Sap Code	Bag	Box	d1 (mm)	L1(min.) (mm)	D (mm)	L (mm)	A (mm)
20	3051566	15	150	19,5	14,5	28,5	160	33
25	3051567	10	100	24,5	16	33	194	40
32	4056718	4	56	31,5	18	46	216	49

Bridge



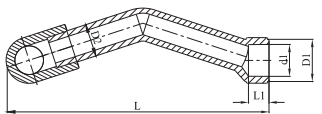
DN	Sap Code	Bag	Box	d (mm)	L (mm)
20	3032960	15	135	20	45
25	3033352	10	90	25	55
32	3032786	5	45	32	69
40	3033353	3	27	40	85

Short Bridge



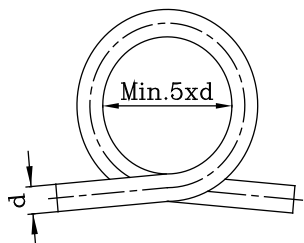
DN	Sap Code	Bag	Box	d (mm)	L1(min.) (mm)	D (mm)	A (mm)	L (mm)
20	4047834	30	240	19,5	14,5	28,5	23	90
25	4047835	25	150	24,5	16	33,5	31	96

Tee w/ V Type Bridge



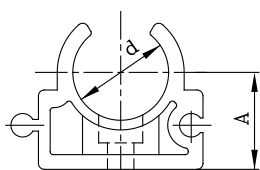
DN	Sap Code	Bag	Box	d1 (mm)	L1(min.) (mm)	D1 (mm)	D2 (mm)	L (mm)
20/20/20	3074995	10	100	19,5	14,5	28	20	160
25/25/25	3074996	10	100	24,5	16	32,5	25	203
25/20/25	3074997	5	50	19,5	14,5	28	20	165
32/25/32	3074998	5	50	24,5	16	32,5	25	212

Omega

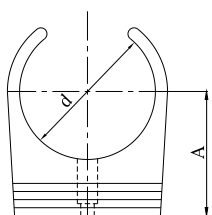


DN	Sap Code	Bag	Box	d1 (mm)
20	3039995	5	25	20
25	3039996	3	15	25
32	3041144	1	8	32
40	3041145	1	4	40

Clips

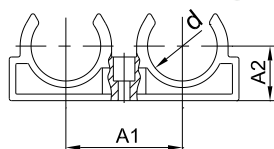


DN	Sap Code	Bag	Box	d (mm)	A (mm)
20	3033503	100	1200	20,5	19
25	3033504	80	960	25,5	22
32	3033505	50	500	32,5	25
40	3033491	40	320	40,5	29



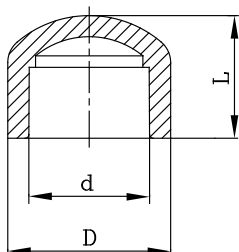
50	3033506	25	200	48,5	44
----	---------	----	-----	------	----

Double Clips



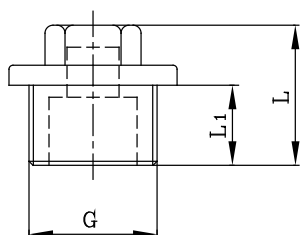
DN	Sap Code	Bag	Box	d (mm)	A1 (mm)	A2 (mm)
20	3039993	50	500	20	38	17,5
25	3039994	40	320	25	44,5	19,5
32	3042396	25	200	32	53,5	25

End Cap



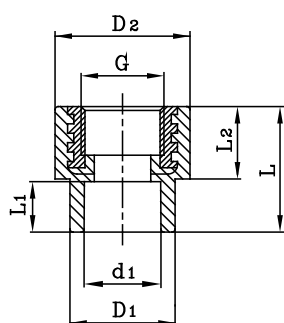
DN	Sap Code	Bag	Box	d (mm)	D (mm)	L (mm)
20	3033363	100	800	19,5	28,5	25,5
25	3033494	80	640	24,5	34,5	29
32	3033495	50	400	31,5	43	32
40	3033496	25	200	39,4	53,5	37,5
50	3033367	10	100	49,4	67	43,5
63	3033368	10	80	62,5	85	52
75	3033369	6	48	74,7	100,5	58
90	3033497	4	32	89,2	121	64
110	3033498	2	16	109	146,5	71,5

Male Threaded End Cap



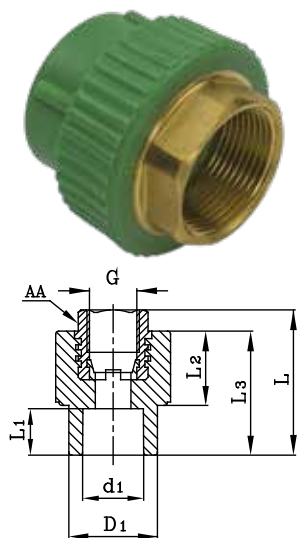
DN	Sap Code	Bag	Box	L1 (mm)	L (mm)	G (mm)
20x1/2	3033499	100	1000	11	34	1/2"
25x3/4	3033500	80	640	11	31	3/4"
32x1	3033501	50	400	20	40	1"

Female Threaded Adaptor



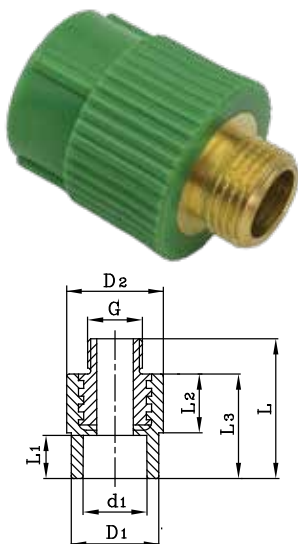
DN	Sap Code	Bag	Box	d1 (mm)	L1(min) (mm)	D1 (mm)	D2 (mm)	L2 (mm)	L (mm)	G (mm)
20x1/2	3033230	20	320	19,5	14,5	28,5	38,5	24	40,5	1/2"
20x3/4	3033000	20	240	19,5	14,5	29	42,5	24	40	3/4"
25x1/2	3033391	25	250	24,5	16	33,5	38	24	40,5	1/2"
25x3/4	3033392	20	280	24,5	16	33	42,5	24	40,5	3/4"
32x3/4	3033393	10	120	31,5	18	43	45,5	24,5	44	3/4"
32x1	3033394	10	120	31,5	18	43	53	28	47,5	1"

Female Threaded Adaptor (Hexagonal Shaped)



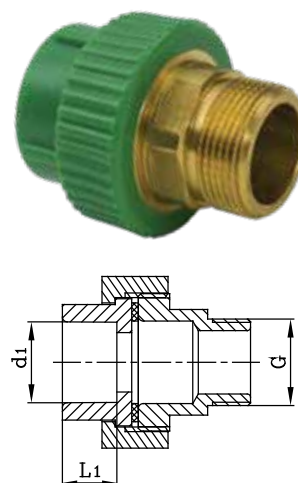
DN	Sap Code	Bag	Box	d1 (mm)	L1(min) (mm)	D1 (mm)	L2 (mm)	L3 (mm)	L (mm)	G (mm)
40x1 1/4	3033395	10	40	39,4	20,5	54	25,5	47	61	1-1/4"
50x1 1/2	3033231	4	24	49,4	23,5	68	29	53,5	67,5	1-1/2"
63x2	3033232	2	14	62,5	27,5	84	28,5	55	73	2"
75x2 1/2	3033233	2	12	74,7	30	100	30	59,5	78	2-1/2"
90x3	3033396	1	5	89,2	33	120,5	44	75,5	92	3"
110x4	3033397	1	4	109	37	147	48	84	102	4"

Male Threaded Adaptor

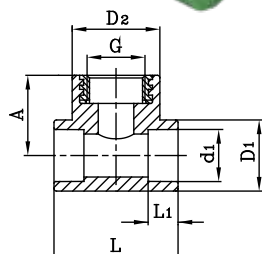


DN	Sap Code	Bag	Box	d1 (mm)	L1(min) (mm)	D1 (mm)	D2 (mm)	L (mm)	L2 (mm)	L3 (mm)	G (mm)
20x1/2	3033381	25	250	19,5	14,5	28,5	35	53	24	40	1/2"
20x3/4	3033382	20	200	19,5	14,5	29	42,5	53	23,5	40	3/4"
25x1/2	3033383	15	240	24,5	16	34	39	53	23,5	40	1/2"
25x3/4	3033384	15	150	24,5	16	33	42	53	24	40	3/4"
32x3/4	3033385	10	100	31,5	18	43	45	57	24,5	44	3/4"
32x1	3033386	10	100	31,5	18	43	52,5	62,5	28	47	1"

Male Threaded Adaptor (Hexagonal Shaped)

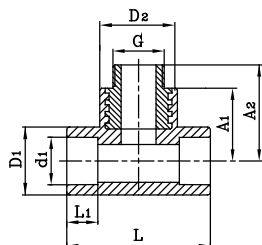


DN	Sap Code	Bag	Box	d1 (mm)	L1(min) (mm)	D1 (mm)	L2 (mm)	L3 (mm)	L (mm)	G (mm)
40x1 1/4"	3033387	5	25	39,4	20,5	54	25	47	81	1-1/4"
50x1 1/2"	3033388	2	16	49,4	23,5	68	29	53,5	87,5	1-1/2"
63x2"	3033389	1	10	62,5	27,5	84	28,5	55	98	2"
75x2 1/2"	3040973	1	6	74,7	30	100	30	59,5	105	2-1/2"
90x3"	3040974	1	5	89,2	33	120,5	43,5	76	118	3"
110x4"	3040975	1	3	109	37	147	48	84,5	129,5	4"



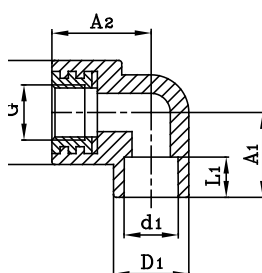
Female Threaded Tee

DN	Sap Code	Bag	Box	d1 (mm)	L1(min) (mm)	D1 (mm)	D2 (mm)	A (mm)	L (mm)	G (mm)
20x1/2	3033406	25	200	19,5	14,5	27	38,5	35	51,5	1/2"
20x3/4	3033407	20	140	19,5	14,5	28,5	43	36	60,5	3/4"
25x1/2	3033408	20	120	24,5	16	33	38	37	60	1/2"
25x3/4	3033409	15	120	24,5	16	35	43	37,5	60	3/4"
32x1	3033410	10	70	31,5	16	43	53,5	43	70	1"



Male Threaded Tee

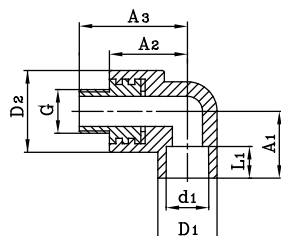
DN	Sap Code	Bag	Box	d1 (mm)	L1(min) (mm)	D1 (mm)	D2 (mm)	A1 (mm)	A2 (mm)	L (mm)	G (mm)
20x1/2	3033411	15	150	19,5	14,5	27	38,5	35	47,5	51,5	1/2"
20x3/4	3033412	10	130	19,5	14,5	28,5	43	36,5	49,5	60,5	3/4"
25x1/2	3033413	10	100	24,5	16	33	38	37	50,5	60	1/2"
25x3/4	3033414	10	100	24,5	16	35	43	37,5	50,5	60	3/4"
32x1	3033415	10	60	31,5	16	43	53,5	43	58	70	1"



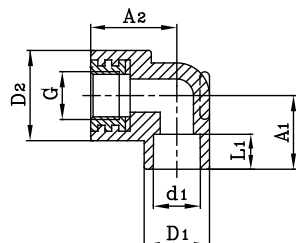
Female Threaded Elbow

DN	Sap Code	Bag	Box	d1 (mm)	L1(min) (mm)	D1 (mm)	D2 (mm)	A1 (mm)	A2 (mm)	G (mm)
20x1/2	3033402	25	250	19,5	14,5	28,5	38,5	31,5	36	1/2"
20x3/4	3033403	20	280	19,5	14,5	29	40	31	35,5	3/4"
25x1/2	3033235	20	160	24,5	16	33,5	38,5	32	38	1/2"
25x3/4	3033404	15	180	24,5	16	33,5	43	32	40	3/4"
32x3/4	3039138	10	100	31,5	18	44	57,5	34	45	3/4"
32x1	3033405	10	100	31,5	18	43,5	54	34	45	1"

Male Threaded Elbow

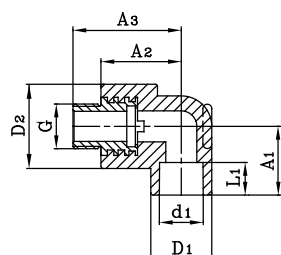


DN	Sap Code	Bag	Box	d1 (mm)	L1(min) (mm)	D1 (mm)	D2 (mm)	A1 (mm)	A2 (mm)	A3 (mm)	G (mm)
20x1/2	3033399	25	200	19,5	14,5	28,5	38,5	31,5	36	49	1/2"
20x3/4	3033011	10	180	19,5	14,5	29	40	31	36	48	3/4"
25x1/2	3033234	10	140	24,5	16	33,5	38,5	32	38	51	1/2"
25x3/4	3033400	20	160	24,5	16	33,5	43	32	40	53	3/4"
32x3/4	3051549	10	80	31,5	18	43,5	57,5	34,5	45	58	3/4"
32x1	3033013	10	80	31,5	18	43,5	54	34,5	45	62	1"



Underplaster Female Elbow

DN	Sap Code	Bag	Box	d1 (mm)	L1(min) (mm)	D1 (mm)	D2 (mm)	A1 (mm)	A2 (mm)	G (mm)
20	3039983	20	200	19,5	14,5	28	38,5	31	36	1/2"
25	3039984	10	180	24,5	16	33	38,5	31,5	36	1/2"



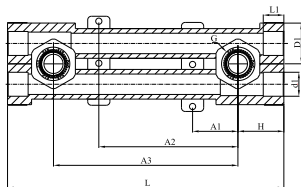
Underplaster Male Elbow

DN	Sap Code	Bag	Box	d1 (mm)	L1(min) (mm)	D1 (mm)	D2 (mm)	A1 (mm)	A2 (mm)	A3 (mm)	G (mm)
20	3039985	15	180	19,5	14,5	28	38,5	31	35	48	1/2"
25	3039986	10	180	24,5	16	33	38,5	31	36	49	1/2"

Adjustable Underplaster Female Elbow



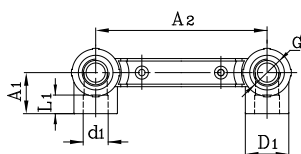
DN	Sap Code	Bag	Box	d1 (mm)	L1(min) (mm)	D1 (mm)	A1 (mm)	A2 (mm)	A3 (mm)	L (mm)	H (mm)	G (mm)
20x1/2	3033240	3	36	19,5	14,5	33	37	113	150	224	38	1/2"
25x1/2	4064555	3	36	24,5	16,5	33	37	113	150	224	38	1/2"



Double Stable Underplaster Female Elbow



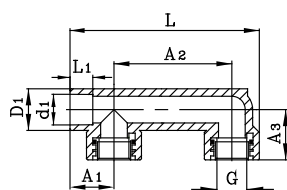
DN	Sap Code	Bag	Box	d1 (mm)	L1(min) (mm)	D1 (mm)	A1 (mm)	A2 (mm)	G (mm)
20x1/2	4047840	5	60	19,5	14,5	34	32	150	1/2"
25x1/2	4047841	5	60	24,5	16	34	32	150	1/2"



Bide Nozzle Part Female



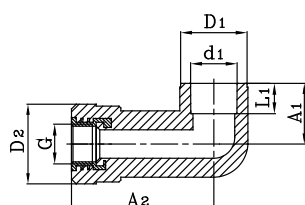
DN	Sap Code	Bag	Box	d1 (mm)	L1(min) (mm)	D1 (mm)	A1 (mm)	A2 (mm)	A3 (mm)	L (mm)	G (mm)
20x1/2	3051585	10	60	19,5	14,5	27	28,5	90	32	136	1/2"



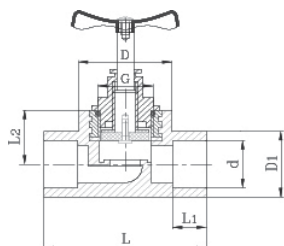
Elbow Long



DN	Sap Code	Bag	Box	d1 (mm)	L1(min) (mm)	D1 (mm)	D2 (mm)	A1 (mm)	A2 (mm)	G (mm)
25x1/2	4049358	25	150	24,5	16	35	42	32	75	1/2"

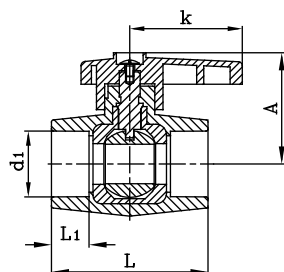


Valve

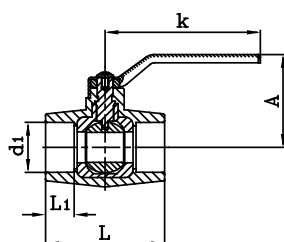


DN	Sap Code	Bag	Box	d1 (mm)	L1(min) (mm)	D (mm)	D1 (mm)	A (mm)	L (mm)	G (mm)
20	3078895	5	70	19,5	14,5	28	38	26	72	1/2"
25	3078898	5	70	24,5	16	33	42	30	77	3/4"
32	3078921	3	42	31,5	18	42,5	53	39	80	1"
40	3041398	3	30	39,4	20,5	54	64	43	111	1-1/4"

Ball Valve



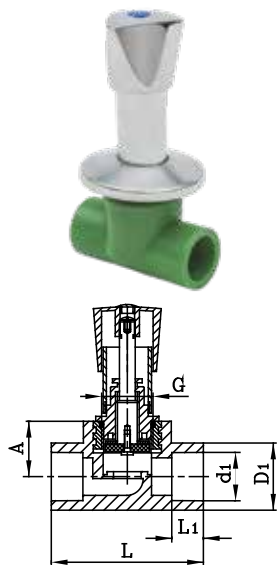
DN	Sap Code	Bag	Box	d1 (mm)	L1(min) (mm)	A (mm)	k (mm)	L (mm)
20	3079036	5	120	19,5	14,5	50	56	68
25	3079037	5	120	24,5	16	50	56	68
32	3079038	3	80	31,5	18	54	56	75



40	3070081	4	48	39,4	20,5	71	119	89
50	3070082	2	28	49,4	23,5	78	119	12
63	3070083	1	15	62,5	27,5	90	157	128
75	3070084	1	12	74,7	30	100	157	148

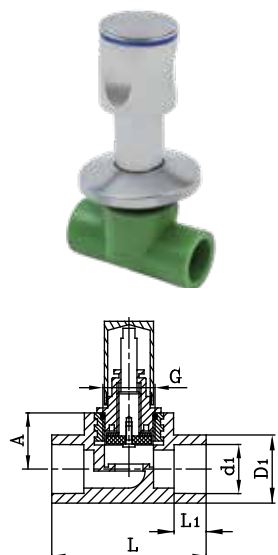
Chrome Valve

DN	Sap Code	Bag	Box	d1 (mm)	L1(min) (mm)	D1 (mm)	A (mm)	L (mm)	G (mm)
20	3072160	1	60	19,5	14,5	28,5	26	72	3/4"
25	3033455	1	60	24,5	16	33,5	30	77	3/4"
32	3033456	1	50	31,5	18	42,5	39	80	1"



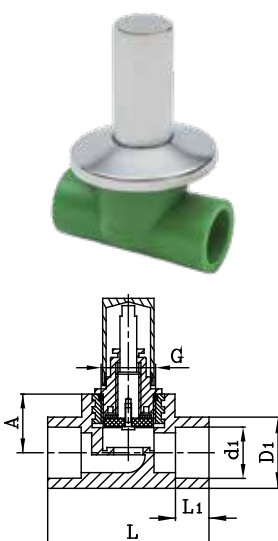
Valve Round Cap

DN	Sap Code	Bag	Box	d1 (mm)	L1(min) (mm)	D1 (mm)	A (mm)	L (mm)	G (mm)
20	3080457	1	60	19,5	14,5	28,5	26,5	72	3/4"
25	3080455	1	60	24,5	16	33,5	30	77	3/4"
32	3080456	1	50	31,5	18	43	38,5	80,5	1"



Decorative Valve

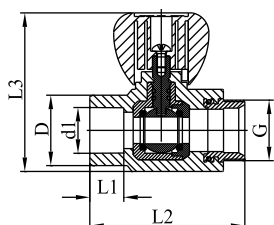
DN	Sap Code	Bag	Box	d1 (mm)	L1(min) (mm)	D1 (mm)	A (mm)	L (mm)	G (mm)
20	3072163	1	60	19,5	14,5	28,5	26,5	72	3/4"
25	3033425	1	60	24,5	16	33,5	30	77	3/4"
32	3033426	1	50	31,5	18	42,5	39	80	1"



Radiator Valve Straight



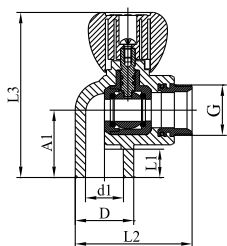
DN	Sap Code	Bag	Box	d1 (mm)	L1(min) (mm)	D (mm)	L2 (mm)	L3 (mm)	G (mm)
20	4067075	5	80	19,5	14,5	30	66	68	3/4"

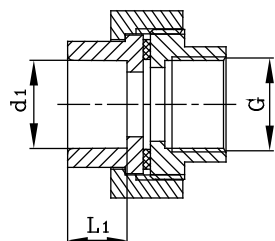


Radiator Valve Elbow



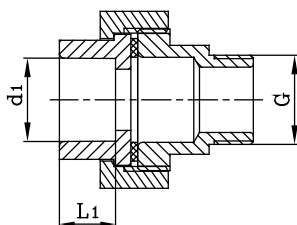
DN	Sap Code	Bag	Box	d1 (mm)	L1(min) (mm)	D (mm)	A1 (mm)	L2 (mm)	L3 (mm)	G (mm)
20	4067076	5	80	19,5	14,5	30	34,5	60	85	3/4"





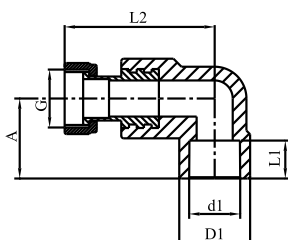
Metal Female Threaded Union (Hexagonal Shaped)

DN	Sap Code	Bag	Box	d1 (mm)	L1(min) (mm)	G (mm)
20x1/2"	3033507	10	120	19,5	14,5	1/2"
25x3/4"	3033508	10	80	24,5	16	3/4"
32x3/4"	3033509	5	60	31,5	18	3/4"
32x1"	3033510	5	60	31,5	18	3/4"
40x1 1/4"-PN16	3033492	2	24	39,4	20,5	1-1/4"
50x1 1/2"-PN16	3033238	2	24	49,4	23,5	1-1/2"
63x2"	3033511	2	18	62,5	27,5	2"



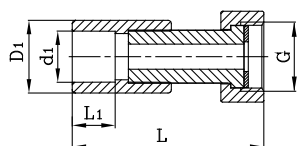
Metal Male Threaded Union (Hexagonal Shaped)

DN	Sap Code	Bag	Box	d (mm)	L1(min) (mm)	G (mm)
20x1/2"	3033512	10	120	19,5	14,5	1/2"
25x3/4"	3033513	10	80	24,5	16	3/4"
32x3/4"	3033514	5	50	31,5	18	3/4"
32x1"	3033515	5	50	31,5	18	1
40x1 1/4"-PN16	3033239	2	24	39,4	20,5	1-1/4"
50x1 1/2"-PN16	3033516	2	20	49,4	23,5	1-1/2"
63x2"	3033517	2	16	62,5	27,5	2"



Shifting Elbow with Metal Transition

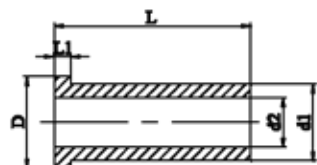
DN	Sap Code	Bag	Box	d1 (mm)	L1(min) (mm)	D1 (mm)	A (mm)	L2 (mm)	G (mm)
20x1/2	3040007	300	60	19,5	14,5	28,5	30	45	1/2"
25x3/4	3040009	250	60	24,5	16	33,5	33	53	3/4"



Shifting Union with Metal Transition

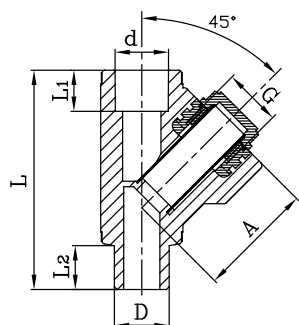
DN	Sap Code	Bag	Box	d1 (mm)	L1(min) (mm)	D1 (mm)	L (mm)	G (mm)
20x1/2	4047825	30	300	19,5	14,5	28,5	57	1/2"
20x3/4	4047826	25	250	19,5	14,5	29	59	3/4"
25x1/2	4047827	25	250	24,5	16	33,5	59	1/2"
25x3/4	4047828	25	250	24,5	16	33	59	3/4"
25x1	4065370	20	200	24,5	16	42,5	72	1"

Shifting Union With Plastic Transition



DN	Sap Code	d1 (mm)	D2 (mm)	D (mm)	L (mm)	L1 (mm)
25x1	3081759	25,0	16,2	29,8	64,5	5,4

Strainer Y with filter



DN	Sap Code	Bag	Box	d1 (mm)	L1(min) (mm)	D (mm)	D2 (mm)	L (mm)	G (mm)
20x1/2	3033518	20	200	19,5	14,5	30	41	80	1/2"
25x3/4	3033519	10	120	24,5	16	35	46	101,5	3/4"

Wavin PPR / PPRCT

The best standard for professionals



wavin

An Orbia business.

Wavin PPR/PPRCT Solid Wall Pipes



PPR Solid Wall Pipe (L=4m)

DN	t(mm) PN 12,5 (SF:1,5)	t(mm) PN 20 (SF:1,5)	t(mm) PN 25 (SF:1,5)	S5 SDR11 PN 12,5	S 3,2 SDR 7,4 PN 20	S 2,5 SDR 6 PN 25	Bundle
20	1,9	2,8	3,4	3050477	3050481	3050484	25
25	2,3	3,5	4,2	3050492	3050496	3050499	20
32	2,9	4,4	5,4	3050506	3050510	3050513	10
40	3,7	5,5	6,7	3050520	3050524	3050528	5
50	4,6	6,9	8,3	3050533	3050537	3050541	5
63	5,8	8,6	10,5	3050546	3050555	3050559	3
75	6,8	10,3	12,5	3050565	3050569	3050572	2
90	8,2	12,3	15,0	3050576	3050580	3050583	2
110	10,0	15,1	18,3	3050588	3050593	3050596	1
125	11,4	17,1	20,8	3050601	3050605	3050608	1



PPRCT Solid Wall Pipe (L=4m)

DN	t(mm) PN22 (SF:1,25)	s 4 SDR 9 PN 22	Bundle
20	2,3	3065530	25
25	2,8	3065531	20
32	3,6	3065532	10
40	4,5	3065533	5
50	5,6	3065534	5
63	7,1	3065535	3
75	8,4	3065536	2
90	10,1	3065537	2
110	12,3	3065538	1
125	14	3065539	1



Wavin PPR/PPRCT Multilayer Pipes

PPR Glass Fiber Multilayer Pipe (L=4m)



DN	t(mm) PN20 (SF:1,5)	t(mm) PN25 (SF:1,5)	s 3,2 SDR 7,4 PN 20	s 2,5 SDR 6 PN 25	Bundle
20	2,8	3,4	3052080	3052081	25
25	3,5	4,2	3052082	3052083	20
32	4,4	5,4	3052084	3052085	10
40	5,5	6,7	3052086	3052087	5
50	6,9	8,3	3075178	3052088	5
63	8,6	10,5	3075449	3052089	3
75	10,3	12,5	3075887	3052090	2
90	12,3	15,0	3075888	3052091	2
110	15,1	18,3	3075939	3052092	1
125	17,1	20,8	3075940	3052093	1

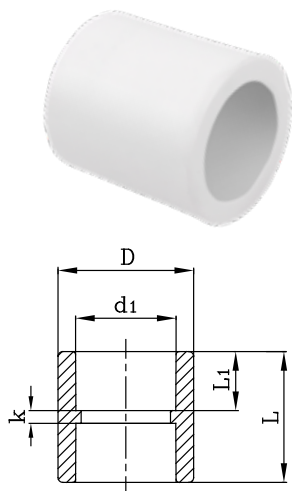
PPRCT Basalt Fiber Multilayer Pipe (L=4m)



DN	t(mm) PN 25 (SF:1,25)	t(mm) PN 22 (SF:1,25)	S 3,2 SDR 7,4 PN 25	S 4 SDR 9 PN 22	Bundle
20	2,8		3052146		25
25	3,5		3052147		15
32	4,4		3052148		10
40	5,5		3052149		6
50	6,9		3052150		4
63	8,6		3052151		3
75		8,4		3052152	2
90		10,1		3052153	1
110		12,3		3052154	1
125		14		3052155	1

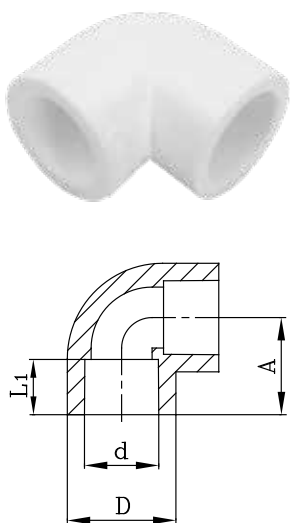
Wavin PPR Fittings

Socket



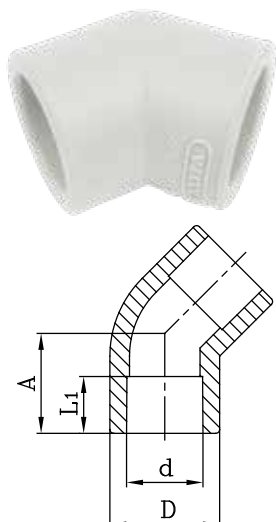
DN	Sap Code	Bag	Box	d (mm)	L1(min.) (mm)	D (mm)	L (mm)	k (mm)
20	3050911	50	600	19,50	14,50	28	33	4
25	3050912	40	400	24,50	16,00	34	37	4
32	3050913	20	240	31,50	18,00	42,5	41	4
40	3050914	15	120	39,40	20,50	53	46	4,5
50	3050915	10	100	49,40	23,50	66	52	4,5
63	3050916	6	48	62,50	27,50	83	60	4,5
75	3050917	6	30	74,70	30,00	100	65	5
90	3050918	1	24	89,20	33,00	120	71,5	6
110	3050919	1	10	109,00	37,00	146	80	6
125	3050920	1	10	124,60	40,00	167	86	6

Elbow (90°)



DN	Sap Code	Bag	Box	d (mm)	L1(min.) (mm)	D (mm)	A (mm)
20	3050934	50	450	19,5	14,5	28	25,5
25	3050936	50	300	24,5	16	33	29,5
32	3050938	25	150	31,5	18	43,5	35
40	3050940	10	80	39,4	20,5	53	41,5
50	3050942	5	40	49,4	23,5	67	50
63	3050944	5	25	62,5	27,5	83,5	60
75	3050946	3	15	74,7	30	100	68
90	3050948	1	8	89,2	33	120	78,5
110	3050950	1	4	109	37	147	92,5
125	3050952	1	4	124,6	40	168	102

Elbow (45°)

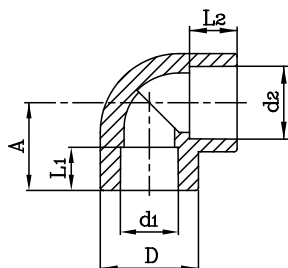


DN	Sap Code	Bag	Box	d (mm)	L1(min.) (mm)	D (mm)	A (mm)
20	3050933	50	400	19,5	14,5	26,5	20
25	3050935	50	250	24,5	16	33,5	22
32	3050937	20	120	31,5	18	43,5	32
40	3050939	10	100	39,4	20,5	52,5	31
50	3050941	8	48	49,4	23,5	68	35
63	3050943	4	24	62,5	27,5	84	42,5
75	3050945	3	18	74,7	30	100	47

Elbow with Reducer



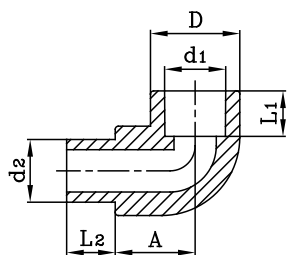
DN	Sap Code	Bag	Box	d1 (mm)	L1(min.) (mm)	d2 (mm)	L2(min.) (mm)	D (mm)	A
25-20	3051217	30	300	19,50	14,50	25	16	3	29,5



Elbow (Female-Male) 90°



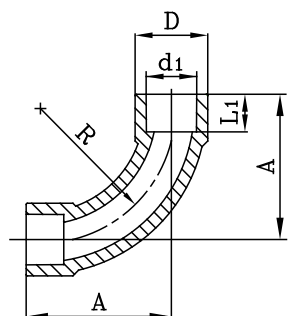
DN	Sap Code	Bag	Box	d1 (mm)	L1(min.) (mm)	d2 (mm)	L2(min.) (mm)	D (mm)	A
20	3050958	50	500	19,5	14,5	20	15	28,5	25
25	3050960	30	300	24,5	16	25	15,5	33,5	29,5
25/20	3050961	30	300	24,5	16	20	15,5	33	29,5

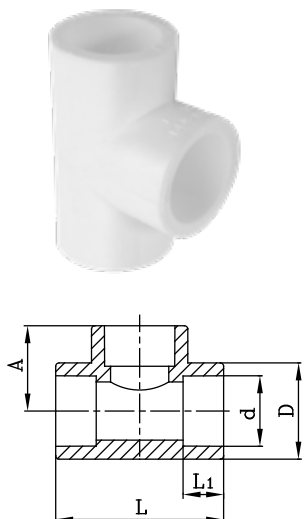


Bend



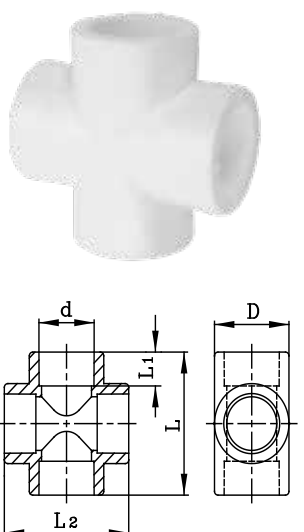
DN	Sap Code	Bag	Box	d1 (mm)	L1(min.) (mm)	D (mm)	L2(min.) (mm)	L (mm)
25	3079933	20	180	24,5	16	35	63,5	88





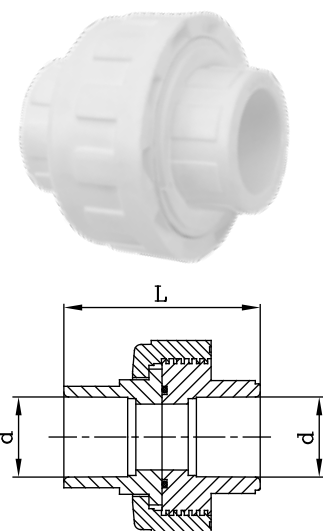
Tee

DN	Sap Code	Bag	Box	d (mm)	L1(min.) (mm)	D (mm)	L (mm)	A (mm)
20	3050996	30	240	19,5	14,5	27	51,5	26
25	3050997	25	150	24,5	16	33	63	30
32	3050998	15	90	31,5	18	43	72	36
40	3050999	5	50	39,4	20,5	53	85	43,5
50	3051000	4	32	49,4	23,5	66,5	100	50
63	3051001	3	18	62,5	27,5	84,5	119,5	60
75	3051002	2	12	74,7	30	100	130	73
90	3051003	1	6	89,2	33	120	158	79
110	3051004	1	4	109	37	146	186	93
125	3051005	1	3	124,6	40	167	208	103,5



Cross Tee

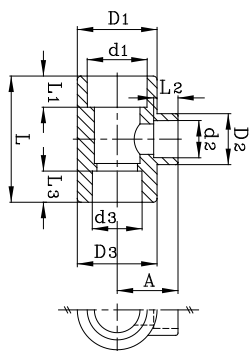
DN	Sap Code	Bag	Box	d (mm)	L1(min.) (mm)	D (mm)	L (mm)	L2 (mm)
20	3051046	25	200	19,5	14,5	26,5	51	51
25	3051047	15	150	24,5	16	33	60	60
32	3051048	10	90	31,5	18	42,5	70	70
40	3051049	5	50	39,4	20,5	53	84	84
50	3051050	3	24	49,4	23,5	66,5	103,5	103,5



Manchon Union PN 10

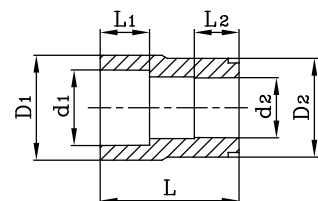
DN	Sap Code	Bag	Box	d (mm)	L (mm)
20	3051174	15	180	19,5	41
25	3051175	10	120	24,5	51
32	3051176	5	60	31,5	63
40	3051177	5	40	39,4	71
50	3051178	4	32	49,4	74

Unequal Tee

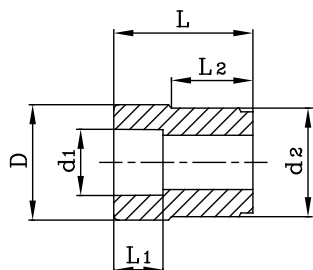


D1	D2	D3	Sap Code	Bag	Box	d1 (mm)	L1(min.) (mm)	D1 (mm)	d2 (mm)	L2(min.) (mm)	D2 (mm)	d3 (mm)	L3(min.) (mm)	D3 (mm)	L (mm)	A (mm)
20x25x20	3051008	25	150	19,5	14,5	33	24,5	16	33,5	19,5	14,5	33	65	37,5		
25x20x20	3051009	25	150	24,5	16	35	19,5	14,5	28	19,5	14,5	28	53	27,5		
25x20x25	3051010	25	150	24,5	16	33	19,5	14,5	26,5	24,5	16	33	55	28,5		
25x25x20	3051011	25	150	24,5	18	33,5	24,5	16	33,5	19,5	14,5	33,5	65	35,5		
32x20x20	3051012	15	90	31,5	18	42,5	19,5	14,5	42,5	19,5	14,5	42,5	73,5	40,5		
32x20x25	3051013	15	90	31,5	18	43	19,5	14,5	42,5	24,5	16	43	73,5	40,5		
32x20x32	3051014	15	90	31,5	18	42,5	19,5	14,5	27	31,5	18	42,5	60	31,5		
32x25x20	3051015	15	90	31,5	18	42,5	24,5	16	42,5	19,5	14,5	42,5	73,5	40		
32x25x25	3051016	15	90	31,5	18	43	24,5	16	43	24,5	16	43	66	40		
32x25x32	3051017	15	90	31,5	18	43	24,5	16	34	31,5	18	43	103	35		
32x50x32	3051019	4	32	31,5	18	65	49,4	23,5	65	31,5	18	65	65,5	54,5		
40x20x40	3051020	5	50	39,4	20,5	53	19,5	14,5	33	39,4	20,5	53	70	38,5		
40x25x40	3051021	5	50	39,4	20,5	53	24,5	16	33	39,4	20,5	53	70	38,5		
40x32x40	3051022	5	50	39,4	20,5	53	31,5	18	43	39,4	20,5	53	80	41		
40x50x40	3051023	4	32	39,4	20,5	66	49,4	23,5	65,5	39,4	20,5	66	103	54,5		
50x20x50	3051024	4	32	49,4	23,5	66,5	19,5	14,5	33	49,4	23,5	66,5	85	44		
50x25x50	3051025	4	32	49,4	23,5	66,5	24,5	16	33	49,4	23,5	66,5	85	44		
50x32x32	3051026	4	32	49,4	23,5	66,5	31,5	18	65,5	31,5	18	66,5	103	55,5		
50x32x40	3051027	5	50	49,4	23,5	66	31,5	18	65,5	39,4	20,5	66	103	54,5		
50x32x50	3051018	4	32	49,4	23,5	65	31,5	18	51	49,4	23,5	65	90	49,5		
50x40x32	3051028	4	32	49,4	23,5	66,5	39,4	20,5	66	31,5	18	66,5	103	55,5		
50x40x40	3051029	4	32	49,4	23,5	66	39,4	20,5	65,5	39,4	20,5	66	104	55,5		
50x40x50	3051030	4	32	49,4	23,5	65	39,4	20,5	52	49,4	23,5	65	90	49,5		
50x50x32	3051031	4	32	49,4	23,5	66	49,4	23,5	66	31,5	18	66	103,5	55		
50x50x40	3051032	4	32	49,4	23,5	65,5	49,4	23,5	65	39,4	20,5	65,5	103,5	54,5		
63x20x63	3051033	2	20	62,5	27,5	84	19,5	14,5	26,5	62,5	27,5	84	80	52		
63x25x63	3051034	2	20	62,5	27,5	84	24,5	16	33	62,5	27,5	84	85	52		
63x32x63	3051035	2	20	62,5	27,5	84	31,5	18	42,5	62,5	27,5	84	91	52		
63x40x63	3051036	2	20	62,5	27,5	83,5	39,4	20,5	53	62,5	27,5	83,5	101	54		
63x50x63	3051037	2	20	62,5	27,5	83,5	49,4	23,5	66	62,5	27,5	83,5	112	57		
75x20x75	3051038	1	12	74,7	30	100	19,5	14,5	33	74,7	30	100	130	60		
75x25x75	3051039	1	12	74,7	30	100	24,5	16	33	74,7	30	100	130	60		
75x32x75	3051040	1	12	74,7	30	100	31,5	18	53	74,7	30	100	130	60		
75x40x75	3051041	1	12	74,7	30	100	39,4	20,5	53	74,7	30	100	130	60		
75x50x75	3051042	1	12	74,7	30	100	49,4	23,5	83,5	74,7	30	100	130	68		
75x63x75	3051043	1	12	74,7	30	100	62,5	27,5	83,5	74,7	30	100	130	68		
90x75x90	3051044	1	8	89,2	33	120	74,7	30	120	89,2	33	120	158	79		
110x90x110	3051045	1	4	109	37	146	89,2	33	146	109	37	146	186	93		

Female-Female Reducer

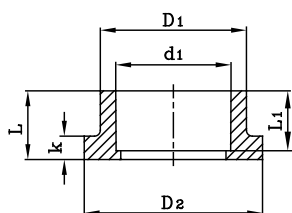


DN	Sap Code	Bag	Box	d1 (mm)	L1(min.) (mm)	d2 (mm)	L2(min.) (mm)	D1 (mm)	D2 (mm)	L (mm)
25/20	3051134	30	300	24,5	16	19,5	14,5	35	32,5	39
32/20	3051135	25	250	31,5	18	19,5	14,5	43	41	48,5
32/25	3051136	25	250	31,5	18	24,5	16	43	41	48,5



Female-Male Reducer

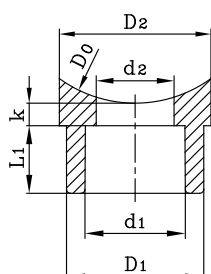
DN	Sap Code	Bag	Box	d1 (mm)	L1(min.) (mm)	d2 (mm)	L2(min.) (mm)	D (mm)	L (mm)
25/20	3051112	40	560	19,5	14,5	25	18	29	39
32/20	3051113	30	300	19,5	14,5	32	13,5	35	39
32/25	3051114	30	300	24,5	16	32	15,5	35	39,5
40/20	3051115	30	240	19,5	14,5	40	25	30,5	47,5
40/25	3051116	30	240	24,5	16	40	24,5	35,5	48
40/32	3051117	20	200	31,5	18	40	27,5	42,5	47
50/20	3051118	20	200	19,5	14,5	50	23,5	29	48
50/25	3051119	25	200	24,5	16	50	23,5	34	49,5
50/32	3051120	15	150	31,5	18	50	23,5	42,5	47,5
50/40	3051121	10	120	39,4	20,5	50	24,5	53,5	48
63/25	3051122	10	120	24,5	16	63	28	34,5	56,5
63/32	3051123	10	120	31,5	18	63	28,5	43,5	57,5
63/40	3051124	5	80	39,4	20,5	63	28	63	53
63/50	3051125	5	60	49,4	23,5	63	28	67	53
75/50	3051126	5	50	49,4	23,5	75	31	75,5	61,5
75/63	3051127	5	40	62,5	27,5	75	26	84,5	67
90/63	3051128	4	36	62,5	27,5	90	28	91	76,5
90/75	3051129	2	24	74,7	30	90	33	98	81,5
110/63	3051130	1	18	62,5	27,5	110	32,5	111	88
110/75	3051131	1	18	74,7	30	110	32,5	111	91,5
110/90	3051132	1	18	89,2	33	110	32,5	119	93,5
125/110	3051133	1	13	109	37	125	37	147	102



Flange Adaptor*

DN	Sap Code	Bag	Box	d (mm)	L1(min.) (mm)	D1 (mm)	D2 (mm)	L (mm)	K (mm)
40	3051165	25	250	39,4	20,5	50,5	62	24	8,5
50	3051166	15	150	49,4	23,5	61,5	73,5	27	8,5
63	3051167	10	80	62,5	27,5	77	90,5	31,5	8
75	3051168	4	36	74,7	30	90,5	106	38	16
90	3051169	4	36	89,2	33	109	124,5	42,5	18
110	3051170	2	20	109	37	132	150,5	50	21
125	3051171	1	12	124,6	40	164	185	62	20

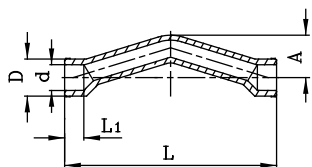
* Use same diameter of flange for 40-90mm adaptors. Use 125mm flange for 110mm adapter and 160mm flange for 125mm adapter.



Saddle

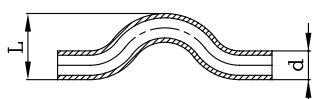
DN	Sap Code	Bag	Box	d0 (mm)	d1 (mm)	L1(min.) (mm)	d2 (mm)	D1 (mm)	D2 (mm)	k (mm)
63/20	3051137	50	600	63	19,5	14,5	17	28,5	37	6
63/25	3051139	50	600	75	19,5	14,5	17	28,5	37	6
75/20	3051141	50	600	90	19,5	14,5	17	28,5	37	6
75/25	3051143	50	600	110	19,5	14,5	17	28,5	37	6
90/20	3051138	50	600	63	24,5	16	19	33,5	37,5	6
90/25	3051140	50	600	75	24,5	16	19	33,5	37,5	6
110/20	3051142	50	600	90	24,5	16	19	33,5	37,5	6
110/25	3051144	50	600	110	24,5	16	19	33,5	37,5	6

Crossover Bridge



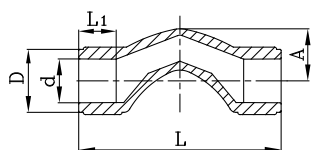
DN	Sap Code	Bag	Box	d1 (mm)	L1(min.) (mm)	D (mm)	L (mm)	A (mm)
20	3051106	15	150	19,5	14,5	28,5	160	33
25	3051107	10	100	24,5	16	33	194	40
32	4056716	4	56	31,5	18	46	216	49

Bridge



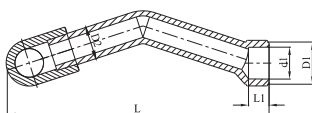
DN	Sap Code	Bag	Box	d (mm)	L (mm)
20	3051102	15	135	20	45
25	3051103	10	90	25	55
32	3051104	5	45	32	69
40	3051105	3	27	40	85

Short Bridge



DN	Sap Code	Bag	Box	d (mm)	L1(min.) (mm)	D (mm)	A (mm)	L (mm)
20	4047830	30	240	19,5	14,5	28,5	23	90
25	4047831	25	150	24,5	16	33,5	31	96

Tee w/ V Type Bridge

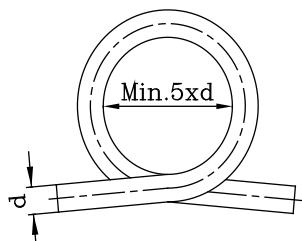


DN	Sap Code	Bag	Box	d1 (mm)	L1(min.) (mm)	D1 (mm)	D2 (mm)	L (mm)
20/20/20	3074991	10	100	19,5	14,5	28	20	160
25/25/25	3074992	10	100	24,5	16	32,5	25	203
25/20/25	3074993	5	50	19,5	14,5	28	20	165
32/25/32	3074994	5	50	24,5	16	32,5	25	212



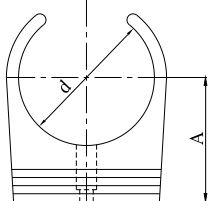
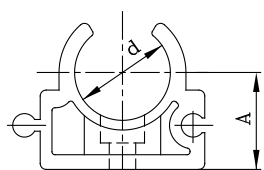
Omega

DN	Sap Code	Bag	Box	d1 (mm)
20	3051108	5	25	20
25	3051109	3	15	25
32	3051110	1	8	32
40	3051111	1	4	40



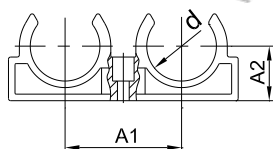
Clips

DN	Sap Code	Bag	Box	d (mm)	A (mm)
20	3050985	100	1200	20,5	19
25	3050986	80	960	25,5	22
32	3050987	50	500	32,5	25
40	3050988	40	320	40,5	29
50	3050989	25	200	48,5	44

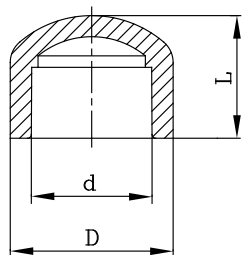


Double Clips

DN	Sap Code	Bag	Box	d (mm)	A1 (mm)	A2 (mm)
20	3050990	50	500	20	38	17,5
25	3050991	40	320	25	44,5	19,5
32	3050992	25	200	32	53,5	25

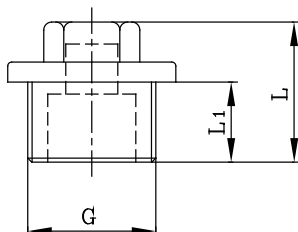


End Cap



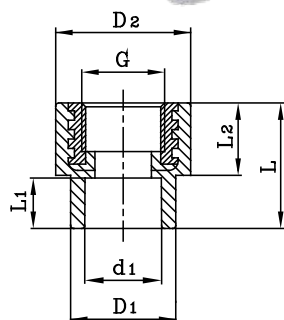
DN	Sap Code	Bag	Box	d (mm)	D (mm)	L (mm)
20	3050921	100	800	19,5	28,5	25,5
25	3050922	80	640	24,5	34,5	29
32	3050923	50	400	31,5	43	32
40	3050924	25	200	39,4	53,5	37,5
50	3050925	10	100	49,4	67	43,5
63	3050926	10	80	62,5	85	52
75	3050927	6	48	74,7	100,5	58
90	3050928	4	32	89,2	121	64
110	3050929	2	16	109	146,5	71,5

Male Threaded End Cap



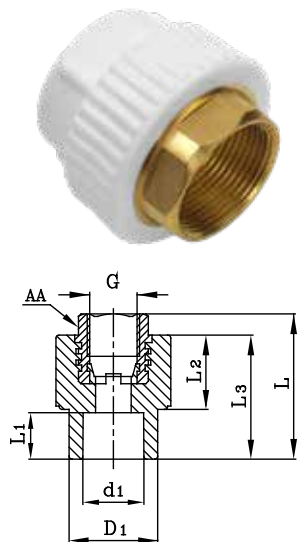
DN	Sap Code	Bag	Box	L1 (mm)	L (mm)	G (mm)
20x1/2	3050930	100	1000	11	34	1/2"
25x3/4	3050931	80	640	11	31	3/4"
32x1	3050932	50	400	20	40	1"

Female Threaded Adaptor



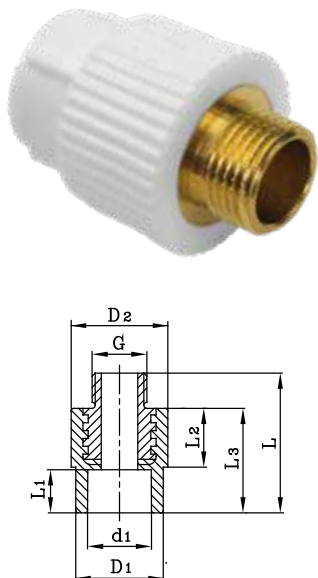
DN	Sap Code	Bag	Box	d1 (mm)	L1(min) (mm)	D1 (mm)	D2 (mm)	L2 (mm)	L (mm)	G (mm)
20x1/2	3087071	20	320	19,5	14,5	28,5	38,5	24	40,5	1/2"
20x3/4	3087072	20	240	19,5	14,5	29	42,5	24	40	3/4"
25x1/2	3087073	25	250	24,5	16	33,5	38	24	40,5	1/2"
25x3/4	3087075	20	280	24,5	16	33	42,5	24	40,5	3/4"
32x3/4	3087076	10	120	31,5	18	43	45,5	24,5	44	3/4"
32x1	3051073	10	120	31,5	18	43	53	28	47,5	1"

Female Threaded Adaptor (Hexagonal Shaped)



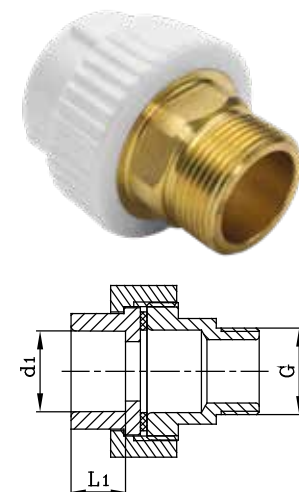
DN	Sap Code	Bag	Box	d1 (mm)	L1(min) (mm)	D1 (mm)	L2 (mm)	L3 (mm)	L (mm)	G (mm)
40x1 1/4	3051074	10	40	39,4	20,5	54	25,5	47	61	1-1/4"
50x1 1/2	3051075	4	24	49,4	23,5	68	29	53,5	67,5	1-1/2"
63x2	3051076	2	14	62,5	27,5	84	28,5	55	73	2"
75x2 1/2	3051077	2	12	74,7	30	100	30	59,5	78	2-1/2"
90x3	3051078	1	5	89,2	33	120,5	44	75,5	92	3"
110x4	3051079	1	4	109	37	147	48	84	102	4"

Male Threaded Adaptor



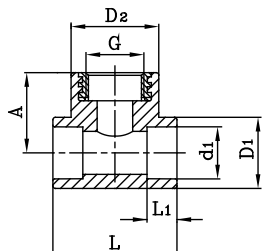
DN	Sap Code	Bag	Box	d1 (mm)	L1(min) (mm)	D1 (mm)	D2 (mm)	L (mm)	L2 (mm)	L3 (mm)	G (mm)
20x1/2	3087077	25	250	19,5	14,5	28,5	35	53	24	40	1/2"
20x3/4	3087078	20	200	19,5	14,5	29	42,5	53	23,5	40	3/4"
25x1/2	3087079	15	240	24,5	16	34	39	53	23,5	40	1/2"
25x3/4	3087080	15	150	24,5	16	33	42	53	24	40	3/4"
32x3/4	3087081	10	100	31,5	18	43	45	57	24,5	44	3/4"
32x1	3051085	10	100	31,5	18	43	52,5	62,5	28	47	1"

Male Threaded Adaptor (Hexagonal Shaped)



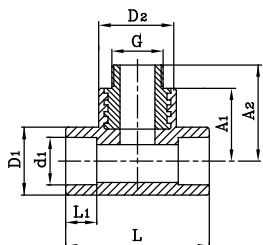
DN	Sap Code	Bag	Box	d1 (mm)	L1(min) (mm)	D1 (mm)	L2 (mm)	L3 (mm)	L (mm)	G (mm)
40x1 1/4"	3051086	5	25	39,4	20,5	54	25	47	81	1-1/4"
50x1 1/2"	3051087	2	16	49,4	23,5	68	29	53,5	87,5	1-1/2"
63x2"	3051088	1	10	62,5	27,5	84	28,5	55	98	2"
75x2 1/2"	3051089	1	6	74,7	30	100	30	59,5	105	2-1/2"
90x3"	3051090	1	5	89,2	33	120,5	43,5	76	118	3"
110x4"	3051091	1	3	109	37	147	48	84,5	129,5	4"

Female Threaded Tee



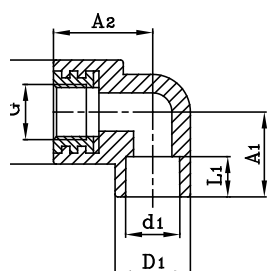
DN	Sap Code	Bag	Box	d1 (mm)	L1(min) (mm)	D1 (mm)	D2 (mm)	A (mm)	L (mm)	G (mm)
20x1/2	3087065	25	200	19,5	14,5	27	38,5	35	51,5	1/2"
20x3/4	3087066	20	140	19,5	14,5	28,5	43	36	60,5	3/4"
25x1/2	3087067	20	120	24,5	16	33	38	37	60	1/2"
25x3/4	3051055	15	120	24,5	16	35	43	37,5	60	3/4"
32x1	3051056	10	70	31,5	16	43	53,5	43	70	1"

Male Threaded Tee



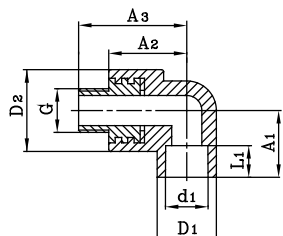
DN	Sap Code	Bag	Box	d1 (mm)	L1(min) (mm)	D1 (mm)	D2 (mm)	A1 (mm)	A2 (mm)	L (mm)	G (mm)
20x1/2	3087068	15	150	19,5	14,5	27	38,5	35	47,5	51,5	1/2"
20x3/4	3087069	10	130	19,5	14,5	28,5	43	36,5	49,5	60,5	3/4"
25x1/2	3087070	10	100	24,5	16	33	38	37	50,5	60	1/2"
25x3/4	3051060	10	100	24,5	16	35	43	37,5	50,5	60	3/4"
32x1	3051061	10	60	31,5	16	43	53,5	43	58	70	1"

Female Threaded Elbow



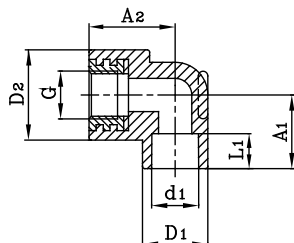
DN	Sap Code	Bag	Box	d1 (mm)	L1(min) (mm)	D1 (mm)	D2 (mm)	A1 (mm)	A2 (mm)	G (mm)
20x1/2	3087063	25	250	19,5	14,5	28,5	38,5	31,5	36	1/2"
20x3/4	3087074	20	280	19,5	14,5	29	40	31	35,5	3/4"
25x1/2	3087085	20	160	24,5	16	33,5	38,5	32	38	1/2"
25x3/4	3087087	15	180	24,5	16	33,5	43	32	40	3/4"
32x3/4	3087088	10	100	31,5	18	44	57,5	34	45	3/4"
32x1	3050968	10	100	31,5	18	43,5	54	34	45	1"

Male Threaded Elbow



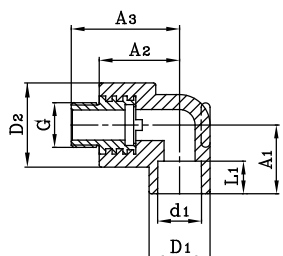
DN	Sap Code	Bag	Box	d1 (mm)	L1(min) (mm)	D1 (mm)	D2 (mm)	A1 (mm)	A2 (mm)	A3 (mm)	G (mm)
20x1/2	3087089	25	200	19,5	14,5	28,5	38,5	31,5	36	49	1/2"
20x3/4	3087090	10	180	19,5	14,5	29	40	31	36	48	3/4"
25x1/2	3087091	10	140	24,5	16	33,5	38,5	32	38	51	1/2"
25x3/4	3087092	20	160	24,5	16	33,5	43	32	40	53	3/4"
32x3/4	3087064	10	80	31,5	18	43,5	57,5	34,5	45	58	3/4"
32x1	3050974	10	80	31,5	18	43,5	54	34,5	45	62	1"

Underplaster Female Elbow



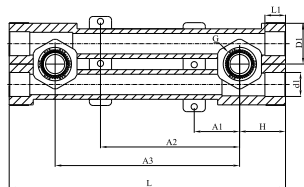
DN	Sap Code	Bag	Box	d1 (mm)	L1(min) (mm)	D1 (mm)	D2 (mm)	A1 (mm)	A2 (mm)	G (mm)
20	3087082	20	200	19,5	14,5	28	38,5	31	36	1/2"
25	3087083	10	180	24,5	16	33	38,5	31,5	36	1/2"

Underplaster Male Elbow



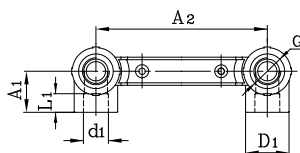
DN	Sap Code	Bag	Box	d1 (mm)	L1(min) (mm)	D1 (mm)	D2 (mm)	A1 (mm)	A2 (mm)	A3 (mm)	G (mm)
20	3087084	15	180	19,5	14,5	28	38,5	31	35	48	1/2"
25	3087086	10	180	24,5	16	33	38,5	31	36	49	1/2"

Adjustable Underplaster Female Elbow



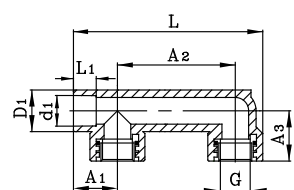
DN	Sap Code	Bag	Box	d1 (mm)	L1(min) (mm)	D1 (mm)	A1 (mm)	A2 (mm)	A3 (mm)	L (mm)	H (mm)	G (mm)
20x1/2	3051149	3	36	19,5	14,5	33	37	113	150	224	38	1/2"
25x1/2	4064554	3	36	24,5	16,5	33	37	113	150	224	38	1/2"

Double Stable Underplaster Female Elbow



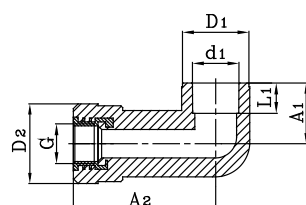
DN	Sap Code	Bag	Box	d1 (mm)	L1(min) (mm)	D1 (mm)	A1 (mm)	A2 (mm)	G (mm)
20x1/2	4047836	5	60	19,5	14,5	34	32	150	1/2"
25x1/2	4047837	5	60	24,5	16	34	32	150	1/2"

Bide Nozzle Part Female



DN	Sap Code	Bag	Box	d1 (mm)	L1(min) (mm)	D1 (mm)	A1 (mm)	A2 (mm)	A3 (mm)	L (mm)	G (mm)
20x1/2	3051215	10	60	19,5	14,5	27	28,5	90	32	136	1/2"

Elbow Long

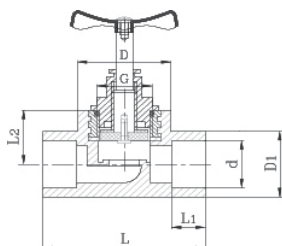


DN	Sap Code	Bag	Box	d1 (mm)	L1(min) (mm)	D1 (mm)	D2 (mm)	A1 (mm)	A2 (mm)	G (mm)
20x1/2	4049356	25	150	24,5	16	35	42	32	75	1/2"

Valve



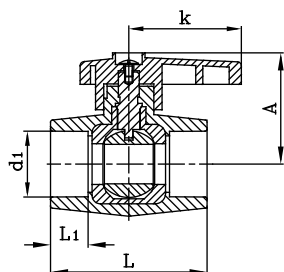
DN	Sap Code	Bag	Box	d1 (mm)	L1(min) (mm)	D (mm)	D1 (mm)	A (mm)	L (mm)	G (mm)
20	3078893	5	70	19,5	14,5	28	38	26	72	1/2"
25	3078896	5	70	24,5	16	33	42	30	77	3/4"
32	3078919	3	42	31,5	18	42,5	53	39	80	1"
40	3051183	3	30	39,4	20,5	54	64	43	111	1-1/4"



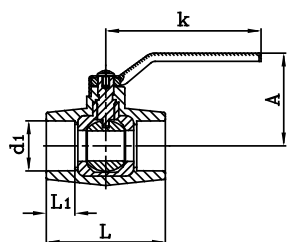
Ball Valve



DN	Sap Code	Bag	Box	d1 (mm)	L1(min) (mm)	A (mm)	k (mm)	L (mm)
20	3079030	5	120	19,5	14,5	50	56	68
25	3079031	5	120	24,5	16	50	56	68
32	3079032	3	80	31,5	18	54	56	75



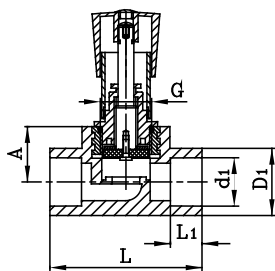
40	3069807	4	48	39,4	20,5	71	119	89
50	3069808	2	28	49,4	23,5	78	119	12
63	3070079	1	15	62,5	27,5	90	157	128
75	3070080	1	12	74,7	30	100	157	148



Chrome Valve



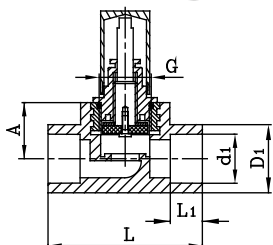
DN	Sap Code	Bag	Box	d1 (mm)	L1(min) (mm)	D1 (mm)	A (mm)	L (mm)	G (mm)
20	3072118	1	60	19,5	14,5	28,5	26	72	3/4"
25	3051185	1	60	24,5	16	33,5	30	77	3/4"
32	3051186	1	50	31,5	18	42,5	39	80	1"



Valve Round Cap



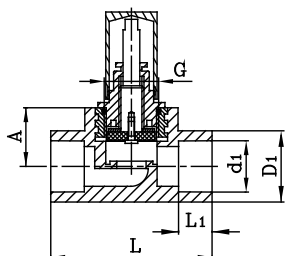
DN	Sap Code	Bag	Box	d1 (mm)	L1(min) (mm)	D1 (mm)	A (mm)	L (mm)	G (mm)
20	3072164	1	60	19,5	14,5	28,5	26,5	72	3/4"
25	3052745	1	60	24,5	16	33,5	30	77	3/4"
32	3052746	1	50	31,5	18	43	38,5	80,5	1"



Decorative Valve



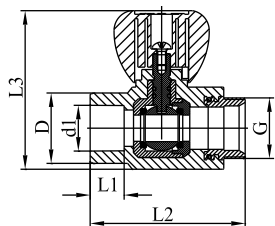
DN	Sap Code	Bag	Box	d1 (mm)	L1(min) (mm)	D1 (mm)	A (mm)	L (mm)	G (mm)
20	3072161	1	60	19,5	14,5	28,5	26,5	72	3/4"
25	3051190	1	60	24,5	16	33,5	30	77	3/4"
32	3051191	1	50	31,5	18	42,5	39	80	1"



Radiator Valve Straight



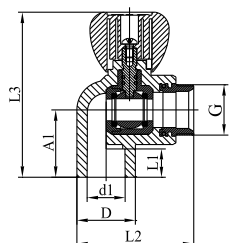
DN	Sap Code	Bag	Box	d1 (mm)	L1(min) (mm)	D (mm)	L2 (mm)	L3 (mm)	G (mm)
20	4047845	5	80	19,5	14,5	30	66	68	3/4"
25	4081144	5	80	24,30	18	35,50	66	68	3/4"



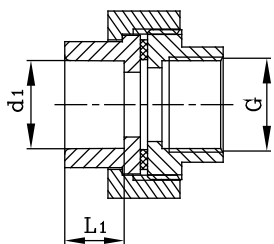
Radiator Valve Elbow



DN	Sap Code	Bag	Box	d1 (mm)	L1(min) (mm)	D (mm)	A1 (mm)	L2 (mm)	L3 (mm)	G (mm)
20	4047844	5	80	19,5	14,5	30	34,50	60	85	3/4"
25	4081145	5	80	24,30	16,50	30	35,50	68,50	71	3/4"

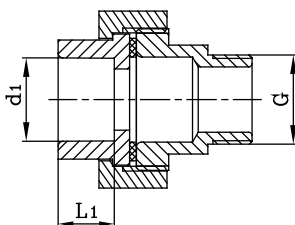


Metal Female Threaded Union (Hexagonal Shaped)



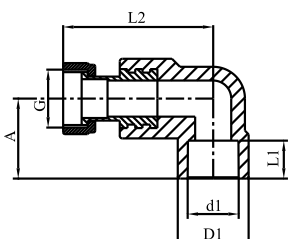
DN	Sap Code	Bag	Box	d1 (mm)	L1(min) (mm)	G (mm)
20x1/2"	3051151	10	120	19,5	14,5	1/2"
25x3/4"	3051152	10	80	24,5	16	3/4"
32x3/4"	3051153	5	60	31,5	18	3/4"
32x1"	3051154	5	60	31,5	18	3/4"
40x1 1/4"	3051155	2	24	39,4	20,5	1-1/4"
50x1 1/2"	3051156	2	24	49,4	23,5	1-1/2"
63x2"	3051157	2	18	62,5	27,5	2"

Metal Male Threaded Union (Hexagonal Shaped)



DN	Sap Code	Bag	Box	d (mm)	L1(min) (mm)	G (mm)
20x1/2"	3051158	10	120	19,5	14,5	1/2"
25x3/4"	3051159	10	80	24,5	16	3/4"
32x3/4"	3051160	5	50	31,5	18	3/4"
32x1"	3051161	5	50	31,5	18	1
40x1 1/4"	3051162	2	24	39,4	20,5	1-1/4"
50x1 1/2"	3051163	2	20	49,4	23,5	1-1/2"
63x2"	3051164	2	16	62,5	27,5	2"

Shifting Elbow with Metal Transition

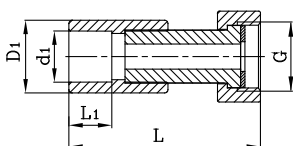


DN	Sap Code	Bag	Box	d1 (mm)	L1(min) (mm)	D1 (mm)	A (mm)	L2 (mm)	G (mm)
20x1/2	3051201	300	60	19,5	14,5	28,5	30	45	1/2"
25x3/4	3051202	250	60	24,5	16	33,5	33	53	3/4"

Shifting Union with Metal Transition



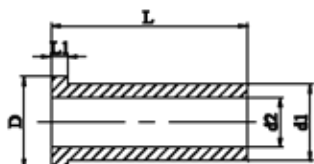
DN	Sap Code	Bag	Box	d1 (mm)	L1(min) (mm)	D1 (mm)	L (mm)	G (mm)
20x1/2	4047817	30	300	19,5	14,5	28,5	57	1/2"
20x3/4	4047818	25	250	19,5	14,5	29	59	3/4"
25x1/2	4047819	25	250	24,5	16	33,5	59	1/2"
25x3/4	4047820	25	250	24,5	16	33	59	3/4"
25x1	4065368	20	200	24,5	16	42,5	72	1"



Shifting Union With Plastic Transition



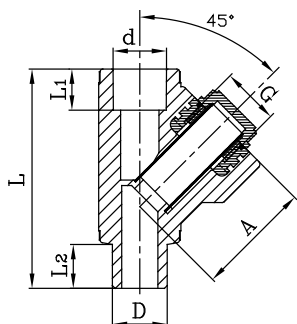
DN	Sap Code	d1 (mm)	D2 (mm)	D (mm)	L (mm)	L1 (mm)
25x1	3081757	25,0	16,2	29,8	64,5	5,4



Strainer Y with Filter



DN	Sap Code	Bag	Box	d1 (mm)	L1(min) (mm)	D (mm)	D2 (mm)	L (mm)	G (mm)
20x1/2	3051203	20	200	19,5	14,5	30	41	80	1/2"
25x3/4	3051204	10	120	24,5	16	35	46	101,5	3/4"



Do you know why Wavin PPR /PPRCT Pipes are best in class?



Corroison
Resistant



High
Endurance



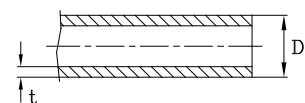
Leak
Proof



Safe For Human
Health

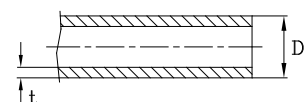


Wavin PPR/PPRCT Solid Wall Pipes



PPR Solid Wall Pipe (L=4m)

DN	t(mm) PN 12,5 (SF:1,5)	t(mm) PN 20 (SF:1,5)	t(mm) PN 25 (SF:1,5)	S5 SDR11 PN 12,5	S 3,2 SDR 7,4 PN 20	S 2,5 SDR 6 PN 25	Bundle
20	1,9	2,8	3,4	3040240	3050623	3050630	25
25	2,3	3,5	4,2	3040241	3050638	3050644	20
32	2,9	4,4	5,4	3040242	3050652	3050658	10
40	3,7	5,5	6,7	3040243	3050666	3050670	5
50	4,6	6,9	8,3	3040244	3050676	3050680	5
63	5,8	8,6	10,5	3040245	3050686	3050690	3
75	6,8	10,3	12,5	3040246	3050695	3050699	2
90	8,2	12,3	15,0	3040247	3050704	3040269	2
110	10,0	15,1	18,3	3040248	3050712	3040270	1
125	11,4	17,1	20,8	3050719	3050721	3040271	1



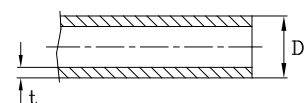
PPRCT Solid Wall Pipe (L=4m)

DN	t (mm) PN 22 (SF:1,25)	s 4 SDR 9 PN 22	Bundle
20	2,3	3065552	25
25	2,8	3065553	20
32	3,6	3065554	10
40	4,5	3065555	5
50	5,6	3065556	5
63	7,1	3065557	3
75	8,4	3065558	2
90	10,1	3065559	2
110	12,3	3065560	1
125	14	3065561	1



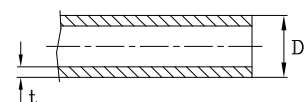
Wavin PPR & PP-RCT
Delivering clean water to your home with trusted Wavin quality.

Wavin PPR/PPRCT Multilayer Pipes



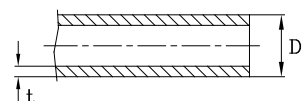
PPR Glass Fiber Multilayer Pipe (L=4m)

DN	t(mm) PN 20 (SF:1,5)	t(mm) PN 25 (SF:1,5)	s 3,2 SDR 7,4 PN 20	s 2,5 SDR 6 PN 25	Bundle
20	2.8	3.4	3052109	3052111	25
25	3.5	4.2	3052112	3052114	20
32	4.4	5.4	3052115	3052116	10
40	5.5	6.7	3052117	3052118	5
50	6.9	8.3	3085138	3085138	5
63	8.6	10.5	3085007	3085007	3
75	10.3	12.5	3085008	3085008	2
90	12.3	15.0	3085039	3085009	2
110	15.1	18.3	3085040	3085040	1
125	17.1	20.8	3085041	3085041	1



PPRCT Glass Fiber Multilayer Pipe (L=4m)

DN	t(mm) PN 25 (SF:1,25)	s 3,2 SDR 7,4 PN 25	Bundle
20	2.8	3093921	25
25	3.5	3093922	20
32	4.4	3093923	10
40	5.5	3093924	5
50	6.9	3093925	5
63	8.6	3093926	3
75	10.3	3093927	2
90	12.3	3093928	2
110	15.1	3093929	1
125	17.1	3093930	1



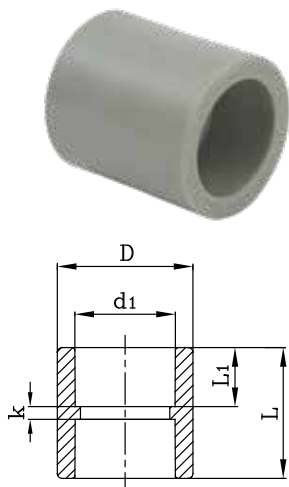
PPRCT Basalt Fiber Multilayer Pipe (L=4m)*

DN	t(mm) PN 25 (SF:1,25)	t(mm) PN 22 (SF:1,25)	S 3,2 SDR 7,4 PN 25	S 4 SDR 9 PN 22	Bundle
20	2,8		3044680		25
25	3,5		3044681		15
32	4,4		3044682		10
40	5,5		3044683		6
50	6,9		3044684		4
63	8,6		3044685		3
75		8,4		3044686	2
90		10,1		3044687	1
110		12,3		3044688	1
125		14		3044689	1

*Grey Basalt ML pipes are light grey color and produced in CZ factory.

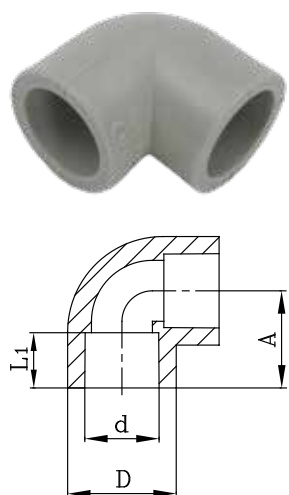
Wavin PPR Fittings

Socket



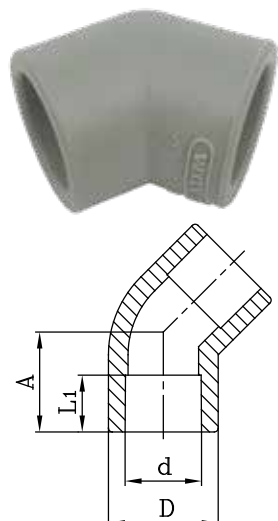
DN	Sap Code	Bag	Box	d (mm)	L1(min.) (mm)	D (mm)	L (mm)	k (mm)
20	3040349	50	600	19,50	14,50	28	33	4
25	3040350	40	400	24,50	16,00	34	37	4
32	3040351	20	240	31,50	18,00	42,5	41	4
40	3040352	15	120	39,40	20,50	53	46	4,5
50	3040353	10	100	49,40	23,50	66	52	4,5
63	3040354	6	48	62,50	27,50	83	60	4,5
75	3040355	6	30	74,70	30,00	100	65	5
90	3040356	1	24	89,20	33,00	120	71,5	6
110	3040357	1	10	109,00	37,00	146	80	6
125	3040358	1	10	124,60	40,00	167	86	6

Elbow (90°)



DN	Sap Code	Bag	Box	d (mm)	L1(min.) (mm)	D (mm)	A (mm)
20	3040127	50	450	19,5	14,5	28	25,5
25	3040128	50	300	24,5	16	33	29,5
32	3040129	25	150	31,5	18	43,5	35
40	3040130	10	80	39,4	20,5	53	41,5
50	3040131	5	40	49,4	23,5	67	50
63	3040132	5	25	62,5	27,5	83,5	60
75	3040133	3	15	74,7	30	100	68
90	3040134	1	8	89,2	33	120	78,5
110	3040135	1	4	109	37	147	92,5
125	3040136	1	4	124,6	40	168	102

Elbow (45°)

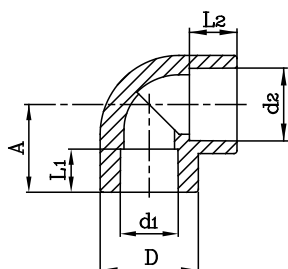


DN	Sap Code	Bag	Box	d (mm)	L1(min.) (mm)	D (mm)	A (mm)
20	3040119	50	400	19,5	14,5	26,5	20
25	3040120	50	250	24,5	16	33,5	22
32	3040121	20	120	31,5	18	43,5	32
40	3040122	10	100	39,4	20,5	52,5	31
50	3040123	8	48	49,4	23,5	68	35
63	3040124	4	24	62,5	27,5	84	42,5
75	3040125	3	18	74,7	30	100	47

Elbow with Reducer



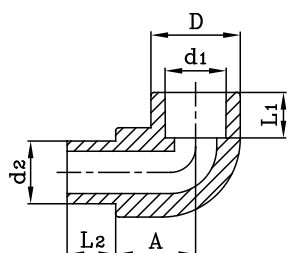
DN	Sap Code	Bag	Box	d1 (mm)	L1(min.) (mm)	d2 (mm)	L2(min.) (mm)	D (mm)	A
25-20	3051268	30	300	19,50	14,50	25	16	3	29,5



Elbow (Female-Male) 90°



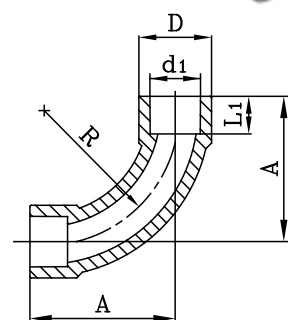
DN	Sap Code	Bag	Box	d1 (mm)	L1(min.) (mm)	d2 (mm)	L2(min.) (mm)	D (mm)	A
20	3040137	50	500	19,5	14,5	20	15	28,5	25
25	3040138	30	300	24,5	16	25	15,5	33,5	29,5
25/20	3040139	30	300	24,5	16	20	15,5	33	29,5

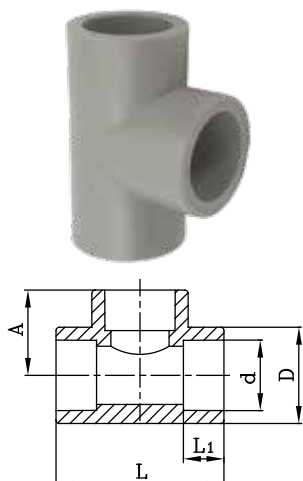


Bend



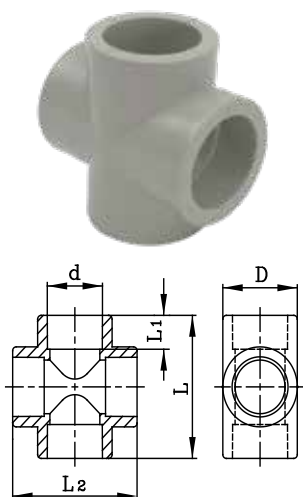
DN	Sap Code	Bag	Box	d1 (mm)	L1(min.) (mm)	D (mm)	L2(min.) (mm)	L (mm)
25	3085003	20	180	24,5	16	35	63,5	88





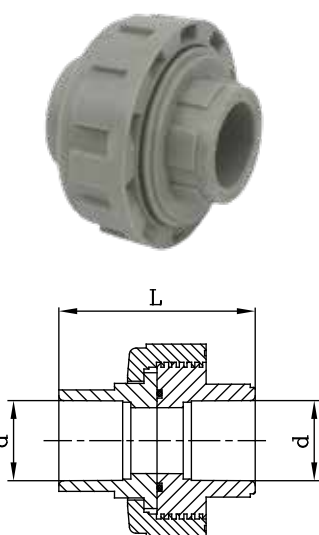
Tee

DN	Sap Code	Bag	Box	d (mm)	L1(min.) (mm)	D (mm)	L (mm)	A (mm)
20	3040177	30	240	19,5	14,5	27	51,5	26
25	3040178	25	150	24,5	16	33	63	30
32	3040179	15	90	31,5	18	43	72	36
40	3040180	5	50	39,4	20,5	53	85	43,5
50	3040181	4	32	49,4	23,5	66,5	100	50
63	3040182	3	18	62,5	27,5	84,5	119,5	60
75	3040183	2	12	74,7	30	100	130	73
90	3040184	1	6	89,2	33	120	158	79
110	3040185	1	4	109	37	146	186	93
125	3040186	1	3	124,6	40	167	208	103,5



Cross Tee

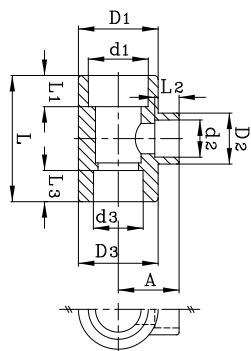
DN	Sap Code	Bag	Box	d (mm)	L1(min.) (mm)	D (mm)	L (mm)	L2 (mm)
20	3040109	25	200	19,5	14,5	26,5	51	51
25	3040110	15	150	24,5	16	33	60	60
32	3040111	10	90	31,5	18	42,5	70	70
40	3040112	5	50	39,4	20,5	53	84	84
50	3040113	3	24	49,4	23,5	66,5	103,5	103,5



Manchon Union PN 10

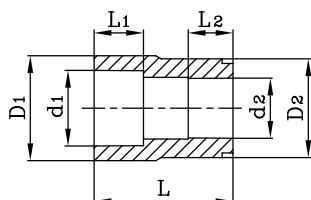
DN	Sap Code	Bag	Box	d (mm)	L (mm)
20	3040389	15	180	19,5	41
25	3040390	10	120	24,5	51
32	3040391	5	60	31,5	63
40	3040392	5	40	39,4	71
50	3040393	4	32	49,4	74

Unequal Tee



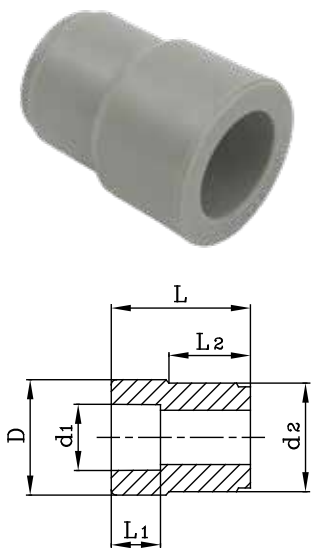
D1	D2	D3	Sap Code	Bag	Box	d1 (mm)	L1(min.) (mm)	D1 (mm)	d2 (mm)	L2(min.) (mm)	D2 (mm)	d3 (mm)	L3(min.) (mm)	D3 (mm)	L (mm)	A (mm)
20x25x20			3040274	25	150	19,5	14,5	33	24,5	16	33,5	19,5	14,5	33	65	37,5
25x20x20			3040275	25	150	24,5	16	35	19,5	14,5	28	19,5	14,5	28	53	27,5
25x20x25			3040277	25	150	24,5	16	33	19,5	14,5	26,5	24,5	16	33	55	28,5
25x25x20			3040276	25	150	24,5	18	33,5	24,5	16	33,5	19,5	14,5	33,5	65	35,5
32x20x20			3040279	15	90	31,5	18	42,5	19,5	14,5	42,5	19,5	14,5	42,5	73,5	40,5
32x20x25			3040282	15	90	31,5	18	43	19,5	14,5	42,5	24,5	16	43	73,5	40,5
32x20x32			3040278	15	90	31,5	18	42,5	19,5	14,5	27	31,5	18	42,5	60	31,5
32x25x20			3040283	15	90	31,5	18	42,5	24,5	16	42,5	19,5	14,5	42,5	73,5	40
32x25x25			3040281	15	90	31,5	18	43	24,5	16	43	24,5	16	43	66	40
32x25x32			3040280	15	90	31,5	18	43	24,5	16	34	31,5	18	43	103	35
32x50x32			3040284	4	32	31,5	18	65	49,4	23,5	65	31,5	18	65	65,5	54,5
40x20x40			3040285	5	50	39,4	20,5	53	19,5	14,5	33	39,4	20,5	53	70	38,5
40x25x40			3040286	5	50	39,4	20,5	53	24,5	16	33	39,4	20,5	53	70	38,5
40x32x40			3040287	5	50	39,4	20,5	53	31,5	18	43	39,4	20,5	53	80	41
40x50x40			3040288	4	32	39,4	20,5	66	49,4	23,5	65,5	39,4	20,5	66	103	54,5
50x20x50			3040293	4	32	49,4	23,5	66,5	19,5	14,5	33	49,4	23,5	66,5	85	44
50x25x50			3051242	4	32	49,4	23,5	66,5	24,5	16	33	49,4	23,5	66,5	85	44
50x32x32			3040294	4	32	49,4	23,5	66,5	31,5	18	65,5	31,5	18	66,5	103	55,5
50x32x40			3040296	5	50	49,4	23,5	66	31,5	18	65,5	39,4	20,5	66	103	54,5
50x32x50			3040297	4	32	49,4	23,5	65	31,5	18	51	49,4	23,5	65	90	49,5
50x40x32			3040295	4	32	49,4	23,5	66,5	39,4	20,5	66	31,5	18	66,5	103	55,5
50x40x40			3040289	4	32	49,4	23,5	66	39,4	20,5	65,5	39,4	20,5	66	104	55,5
50x40x50			3040290	4	32	49,4	23,5	65	39,4	20,5	52	49,4	23,5	65	90	49,5
50x50x32			3040298	4	32	49,4	23,5	66	49,4	23,5	66	31,5	18	66	103,5	55
50x50x40			3040291	4	32	49,4	23,5	65,5	49,4	23,5	65	39,4	20,5	65,5	103,5	54,5
63x20x63			3040299	2	20	62,5	27,5	84	19,5	14,5	26,5	62,5	27,5	84	80	52
63x25x63			3040300	2	20	62,5	27,5	84	24,5	16	33	62,5	27,5	84	85	52
63x32x63			3040301	2	20	62,5	27,5	84	31,5	18	42,5	62,5	27,5	84	91	52
63x40x63			3040302	2	20	62,5	27,5	83,5	39,4	20,5	53	62,5	27,5	83,5	101	54
63x50x63			3040303	2	20	62,5	27,5	83,5	49,4	23,5	66	62,5	27,5	83,5	112	57
75x20x75			3040304	1	12	74,7	30	100	19,5	14,5	33	74,7	30	100	130	60
75x25x75			3040305	1	12	74,7	30	100	24,5	16	33	74,7	30	100	130	60
75x32x75			3040306	1	12	74,7	30	100	31,5	18	53	74,7	30	100	130	60
75x40x75			3040307	1	12	74,7	30	100	39,4	20,5	53	74,7	30	100	130	60
75x50x75			3040308	1	12	74,7	30	100	49,4	23,5	83,5	74,7	30	100	130	68
75x63x75			3040309	1	12	74,7	30	100	62,5	27,5	83,5	74,7	30	100	130	68
90x75x90			3040310	1	8	89,2	33	120	74,7	30	120	89,2	33	120	158	79
110x90x110			3040311	1	4	109	37	146	89,2	33	146	109	37	146	186	93

Female-Female Reducer



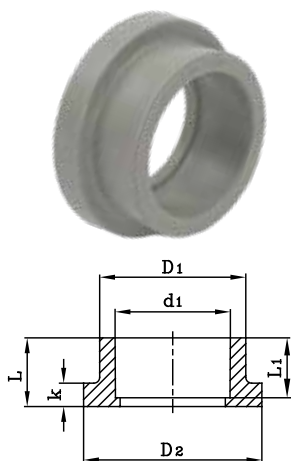
DN	Sap Code	Bag	Box	d1 (mm)	L1(min.) (mm)	d2 (mm)	L2(min.) (mm)	D1 (mm)	D2 (mm)	L (mm)
25/20	3040312	30	300	24,5	16	19,5	14,5	35	32,5	39
32/20	3051246	25	250	31,5	18	19,5	14,5	43	41	48,5
32/25	3040313	25	250	31,5	18	24,5	16	43	41	48,5

Female-Male Reducer



DN	Sap Code	Bag	Box	d1 (mm)	L1(min.) (mm)	d2 (mm)	L2(min.) (mm)	D (mm)	L (mm)
25/20	3040315	40	560	19,5	14,5	25	18	29	39
32/20	3040317	30	300	19,5	14,5	32	13,5	35	39
32/25	3040316	30	300	24,5	16	32	15,5	35	39,5
40/20	3040318	30	240	19,5	14,5	40	25	30,5	47,5
40/25	3040319	30	240	24,5	16	40	24,5	35,5	48
40/32	3040320	20	200	31,5	18	40	27,5	42,5	47
50/20	3040321	20	200	19,5	14,5	50	23,5	29	48
50/25	3040322	25	200	24,5	16	50	23,5	34	49,5
50/32	3040323	15	150	31,5	18	50	23,5	42,5	47,5
50/40	3040324	10	120	39,4	20,5	50	24,5	53,5	48
63/25	3040325	10	120	24,5	16	63	28	34,5	56,5
63/32	3040326	10	120	31,5	18	63	28,5	43,5	57,5
63/40	3040327	5	80	39,4	20,5	63	28	63	53
63/50	3040328	5	60	49,4	23,5	63	28	67	53
75/50	3040329	5	50	49,4	23,5	75	31	75,5	61,5
75/63	3040330	5	40	62,5	27,5	75	26	84,5	67
90/63	3040331	4	36	62,5	27,5	90	28	91	76,5
90/75	3040332	2	24	74,7	30	90	33	98	81,5
110/63	3040333	1	18	62,5	27,5	110	32,5	111	88
110/75	3040334	1	18	74,7	30	110	32,5	111	91,5
110/90	3040335	1	18	89,2	33	110	32,5	119	93,5
125/110	3040336	1	13	109	37	125	37	147	102

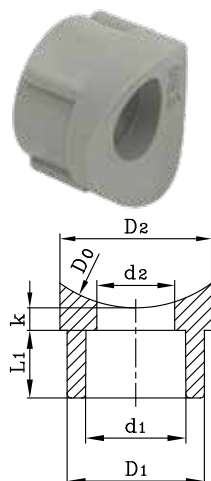
Flange Adaptor*



DN	Sap Code	Bag	Box	d (mm)	L1(min.) (mm)	D1 (mm)	D2 (mm)	L (mm)	K (mm)
40	3040196	25	250	39,4	20,5	50,5	62	24	8,5
50	3040197	15	150	49,4	23,5	61,5	73,5	27	8,5
63	3040198	10	80	62,5	27,5	77	90,5	31,5	8
75	3040199	4	36	74,7	30	90,5	106	38	16
90	3040200	4	36	89,2	33	109	124,5	42,5	18
110	3040201	2	20	109	37	132	150,5	50	21
125	3040202	1	12	124,6	40	164	185	62	20

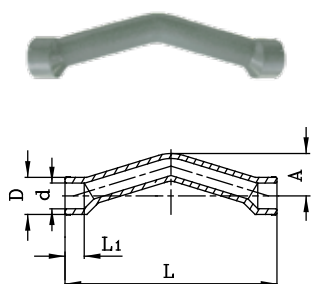
* Use same diameter of flange for 40-90mm adaptors. Use 125mm flange for 110mm adaptor and 160mm flange for 125mm adaptor.

Saddle



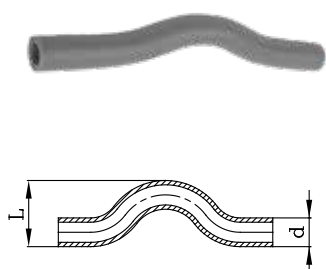
DN	Sap Code	Bag	Box	d0 (mm)	d1 (mm)	L1(min.) (mm)	d2 (mm)	D1 (mm)	D2 (mm)	k (mm)
63/20	3040337	50	600	63	19,5	14,5	17	28,5	37	6
63/25	3040338	50	600	75	19,5	14,5	17	28,5	37	6
75/20	3040339	50	600	90	19,5	14,5	17	28,5	37	6
75/25	3040340	50	600	110	19,5	14,5	17	28,5	37	6
90/20	3040341	50	600	63	24,5	16	19	33,5	37,5	6
90/25	3040342	50	600	75	24,5	16	19	33,5	37,5	6
110/20	3040343	50	600	90	24,5	16	19	33,5	37,5	6
110/25	3040344	50	600	110	24,5	16	19	33,5	37,5	6

Crossover Bridge



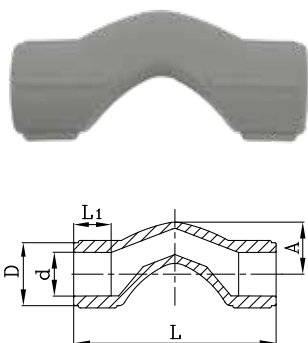
DN	Sap Code	Bag	Box	d1 (mm)	L1(min.) (mm)	D (mm)	L (mm)	A (mm)
20	3051244	15	150	19,5	14,5	28,5	160	33
25	3051245	10	100	24,5	16	33	194	40
32	4056717	4	56	31,5	18	46	216	49

Bridge



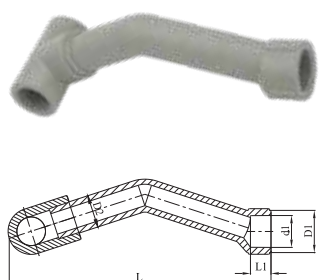
DN	Sap Code	Bag	Box	d (mm)	L (mm)
20	3040115	15	135	20	45
25	3040116	10	90	25	55
32	3040117	5	45	32	69
40	3040118	3	27	40	85

Short Bridge



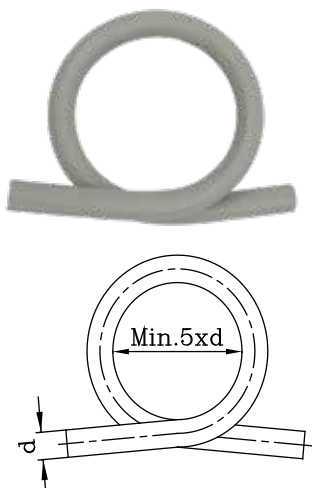
DN	Sap Code	Bag	Box	d (mm)	L1(min.) (mm)	D (mm)	A (mm)	L (mm)
20	4047832	30	240	19,5	14,5	28,5	23	90
25	4047833	25	150	24,5	16	33,5	31	96

Tee w/ V Type Bridge



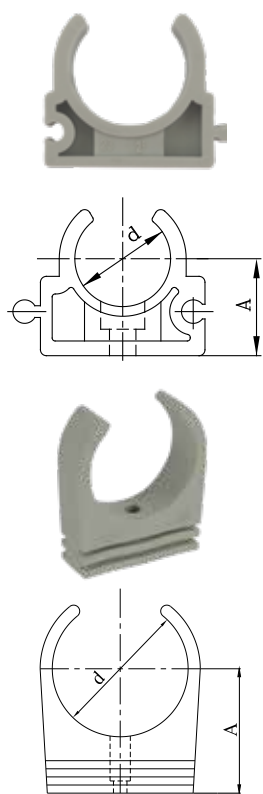
DN	Sap Code	Bag	Box	d1 (mm)	L1(min.) (mm)	D1 (mm)	D2 (mm)	L (mm)
20/20/20	3075009	10	100	19,5	14,5	28	20	160
25/25/25	3075010	10	100	24,5	16	32,5	25	203
25/20/25	3075011	5	50	19,5	14,5	28	20	165
32/25/32	3075012	5	50	24,5	16	32,5	25	212

Omega



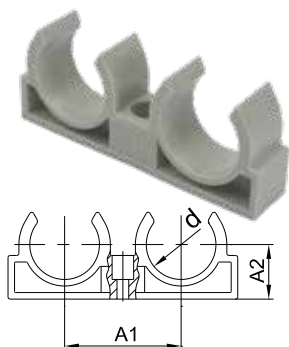
DN	Sap Code	Bag	Box	d1 (mm)
20	3040105	5	25	20
25	3040106	3	15	25
32	3040107	1	8	32
40	3040108	1	4	40

Clips



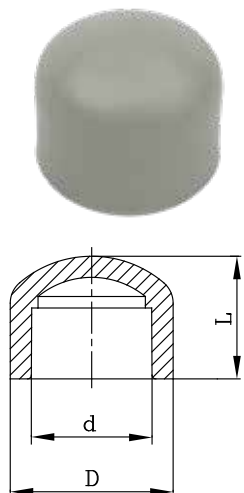
DN	Sap Code	Bag	Box	d (mm)	A (mm)
20	3040232	100	1200	20,5	19
25	3040233	80	960	25,5	22
32	3040234	50	500	32,5	25
40	3040235	40	320	40,5	29
50	3040236	25	200	48,5	44

Double Clips



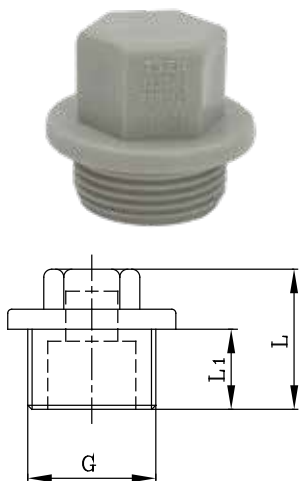
DN	Sap Code	Bag	Box	d (mm)	A1 (mm)	A2 (mm)
20	3040237	50	500	20	38	17,5
25	3040238	40	320	25	44,5	19,5
32	3040239	25	200	32	53,5	25

End Cap



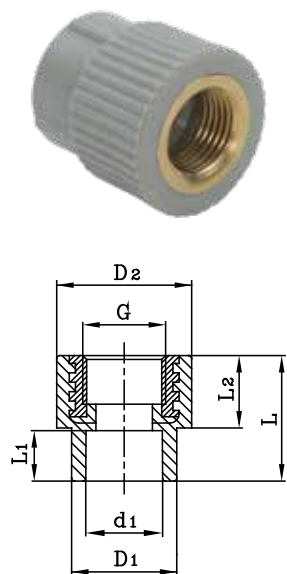
DN	Sap Code	Bag	Box	d (mm)	D (mm)	L (mm)
20	3040167	100	800	19,5	28,5	25,5
25	3040168	80	640	24,5	34,5	29
32	3040169	50	400	31,5	43	32
40	3040170	25	200	39,4	53,5	37,5
50	3040171	10	100	49,4	67	43,5
63	3040172	10	80	62,5	85	52
75	3040173	6	48	74,7	100,5	58
90	3040174	4	32	89,2	121	64
110	3040175	2	16	109	146,5	71,5

Male Threaded End Cap



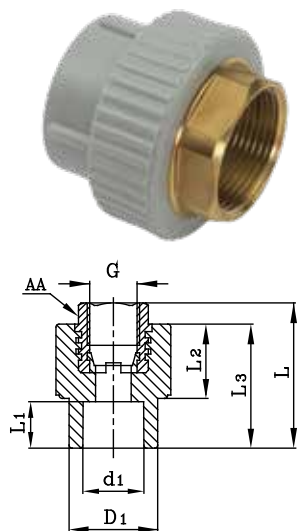
DN	Sap Code	Bag	Box	L1 (mm)	L (mm)	G (mm)
20x1/2	3040205	100	1000	11	34	1/2"
25x3/4	3040206	80	640	11	31	3/4"
32x1	3040207	50	400	20	40	1"

Female Threaded Adaptor



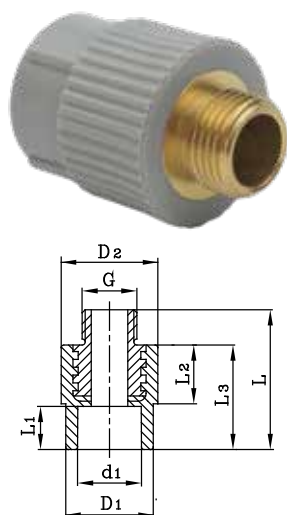
DN	Sap Code	Bag	Box	d1 (mm)	L1(min) (mm)	D1 (mm)	D2 (mm)	L2 (mm)	L (mm)	G (mm)
20x1/2	3040024	20	320	19,5	14,5	28,5	38,5	24	40,5	1/2"
20x3/4	3040025	20	240	19,5	14,5	29	42,5	24	40	3/4"
25x1/2	3040026	25	250	24,5	16	33,5	38	24	40,5	1/2"
25x3/4	3040027	20	280	24,5	16	33	42,5	24	40,5	3/4"
32x3/4	3040028	10	120	31,5	18	43	45,5	24,5	44	3/4"
32x1	3040049	10	120	31,5	18	43	53	28	47,5	1"

Female Threaded Adaptor (Hexagonal Shaped)



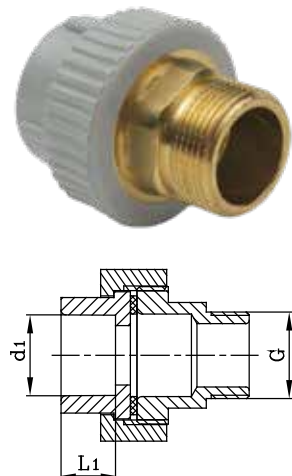
DN	Sap Code	Bag	Box	d1 (mm)	L1(min) (mm)	D1 (mm)	L2 (mm)	L3 (mm)	L (mm)	G (mm)
40x1 1/4	3040050	10	40	39,4	20,5	54	25,5	47	61	1-1/4"
50x1 1/2	3040051	4	24	49,4	23,5	68	29	53,5	67,5	1-1/2"
63x2	3040052	2	14	62,5	27,5	84	28,5	55	73	2"
75x2 1/2	3040053	2	12	74,7	30	100	30	59,5	78	2-1/2"
90x3	3040054	1	5	89,2	33	120,5	44	75,5	92	3"
110x4	3040055	1	4	109	37	147	48	84	102	4"

Male Threaded Adaptor



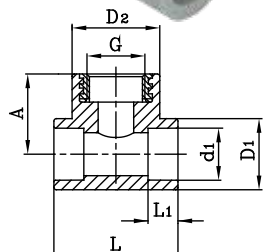
DN	Sap Code	Bag	Box	d1 (mm)	L1(min) (mm)	D1 (mm)	D2 (mm)	L (mm)	L2 (mm)	L3 (mm)	G (mm)
20x1/2	3040062	25	250	19,5	14,5	28,5	35	53	24	40	1/2"
20x3/4	3040063	20	200	19,5	14,5	29	42,5	53	23,5	40	3/4"
25x1/2	3040064	15	240	24,5	16	34	39	53	23,5	40	1/2"
25x3/4	3040065	15	150	24,5	16	33	42	53	24	40	3/4"
32x3/4	3040066	10	100	31,5	18	43	45	57	24,5	44	3/4"
32x1	3040067	10	100	31,5	18	43	52,5	62,5	28	47	1"

Male Threaded Adaptor (Hexagonal Shaped)



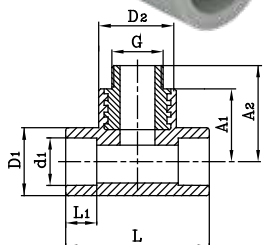
DN	Sap Code	Bag	Box	d1 (mm)	L1(min) (mm)	D1 (mm)	L2 (mm)	L3 (mm)	L (mm)	G (mm)
40x1 1/4"	3040068	5	25	39,4	20,5	54	25	47	81	1-1/4"
50x1 1/2"	3040069	2	16	49,4	23,5	68	29	53,5	87,5	1-1/2"
63x2"	3040070	1	10	62,5	27,5	84	28,5	55	98	2"
75x2 1/2"	3040071	1	6	74,7	30	100	30	59,5	105	2-1/2"
90x3"	3040072	1	5	89,2	33	120,5	43,5	76	118	3"
110x4"	3040073	1	3	109	37	147	48	84,5	129,5	4"

Female Threaded Tee



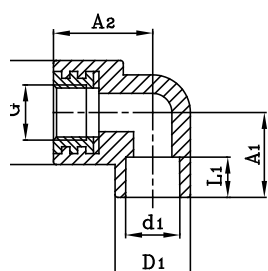
DN	Sap Code	Bag	Box	d1 (mm)	L1(min) (mm)	D1 (mm)	D2 (mm)	A (mm)	L (mm)	G (mm)
20x1/2	3040187	25	200	19,5	14,5	27	38,5	35	51,5	1/2"
20x3/4	3040188	20	140	19,5	14,5	28,5	43	36	60,5	3/4"
25x1/2	3040189	20	120	24,5	16	33	38	37	60	1/2"
25x3/4	3040190	15	120	24,5	16	35	43	37,5	60	3/4"
32x1	3040191	10	70	31,5	16	43	53,5	43	70	1"

Male Threaded Tee



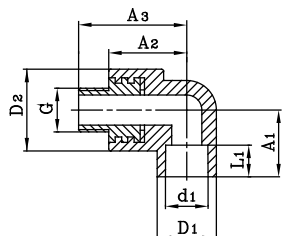
DN	Sap Code	Bag	Box	d1 (mm)	L1(min) (mm)	D1 (mm)	D2 (mm)	A1 (mm)	A2 (mm)	L (mm)	G (mm)
20x1/2	3040208	15	150	19,5	14,5	27	38,5	35	47,5	51,5	1/2"
20x3/4	3040209	10	130	19,5	14,5	28,5	43	36,5	49,5	60,5	3/4"
25x1/2	3040210	10	100	24,5	16	33	38	37	50,5	60	1/2"
25x3/4	3040211	10	100	24,5	16	35	43	37,5	50,5	60	3/4"
32x1	3040212	10	60	31,5	16	43	53,5	43	58	70	1"

Female Threaded Elbow



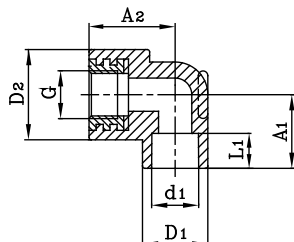
DN	Sap Code	Bag	Box	d1 (mm)	L1(min) (mm)	D1 (mm)	D2 (mm)	A1 (mm)	A2 (mm)	G (mm)
20x1/2	3040142	25	250	19,5	14,5	28,5	38,5	31,5	36	1/2"
20x3/4	3040143	20	280	19,5	14,5	29	40	31	35,5	3/4"
25x1/2	3040144	20	160	24,5	16	33,5	38,5	32	38	1/2"
25x3/4	3040145	15	180	24,5	16	33,5	43	32	40	3/4"
32x3/4	3040146	10	100	31,5	18	44	57,5	34	45	3/4"
32x1	3041449	10	100	31,5	18	43,5	54	34	45	1"

Male Threaded Elbow



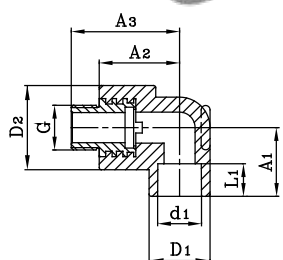
DN	Sap Code	Bag	Box	d1 (mm)	L1(min) (mm)	D1 (mm)	D2 (mm)	A1 (mm)	A2 (mm)	A3 (mm)	A3 (mm)
20x1/2	3040154	25	200	19,5	14,5	28,5	38,5	31,5	36	49	1/2"
20x3/4	3040155	10	180	19,5	14,5	29	40	31	36	48	3/4"
25x1/2	3040156	10	140	24,5	16	33,5	38,5	32	38	51	1/2"
25x3/4	3040157	20	160	24,5	16	33,5	43	32	40	53	3/4"
32x3/4	3051239	10	80	31,5	18	43,5	57,5	34,5	45	58	3/4"
32x1	3040158	10	80	31,5	18	43,5	54	34,5	45	62	1"

Underplaster Female Elbow



DN	Sap Code	Bag	Box	d1 (mm)	L1(min) (mm)	D1 (mm)	D2 (mm)	A1 (mm)	A2 (mm)	G (mm)
20	3040384	20	200	19,5	14,5	28	38,5	31	36	1/2"
25	3040385	10	180	24,5	16	33	38,5	31,5	36	1/2"

Underplaster Male Elbow

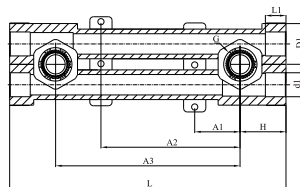


DN	Sap Code	Bag	Box	d1 (mm)	L1(min) (mm)	D1 (mm)	D2 (mm)	A1 (mm)	A2 (mm)	A3 (mm)	G (mm)
20	3040387	15	180	19,5	14,5	28	38,5	31	35	48	1/2"
25	3040388	10	180	24,5	16	33	38,5	31	36	49	1/2"

Adjustable Underplaster Female Elbow



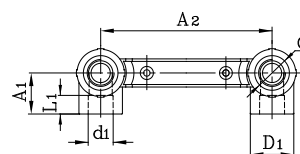
DN	Sap Code	Bag	Box	d1 (mm)	L1(min) (mm)	D1 (mm)	A1 (mm)	A2 (mm)	A3 (mm)	L (mm)	H (mm)	G (mm)
20x1/2	3040081	3	36	19,5	14,5	33	37	113	150	224	38	1/2"
25x1/2	4064856	3	36	24,5	16,5	33	37	113	150	224	38	1/2"



Double Stable Underplaster Female Elbow



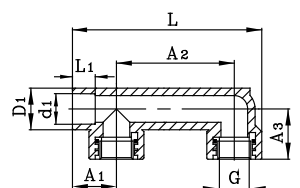
DN	Sap Code	Bag	Box	d1 (mm)	L1(min) (mm)	D1 (mm)	A1 (mm)	A2 (mm)	G (mm)
20x1/2	4047838	5	60	19,5	14,5	34	32	150	1/2"
25x1/2	4047839	5	60	24,5	16	34	32	150	1/2"



Bide Nozzle Part Female



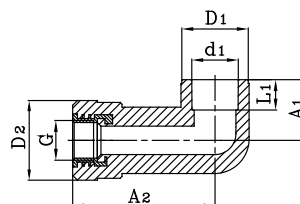
DN	Sap Code	Bag	Box	d1 (mm)	L1(min) (mm)	D1 (mm)	A1 (mm)	A2 (mm)	A3 (mm)	L (mm)	G (mm)
20x1/2	3051266	10	60	19,5	14,5	27	28,5	90	32	136	1/2"



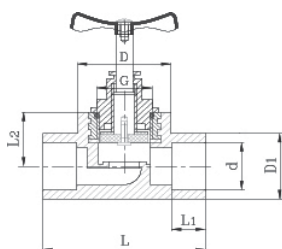
Elbow Long



DN	Sap Code	Bag	Box	d1 (mm)	L1(min) (mm)	D1 (mm)	D2 (mm)	A1 (mm)	A2 (mm)	G (mm)
20x1/2	4049357	25	150	24,5	16	35	42	32	75	1/2"

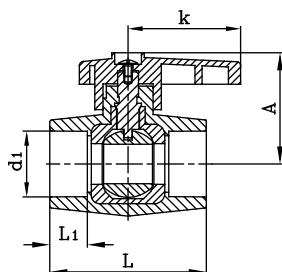


Valve

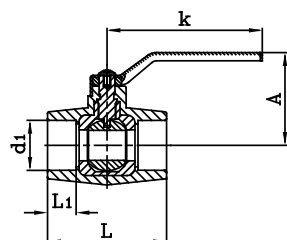


DN	Sap Code	Bag	Box	d1 (mm)	L1(min) (mm)	D (mm)	D1 (mm)	A (mm)	L (mm)	G (mm)
20	3078894	5	70	19,5	14,5	28	38	26	72	1/2"
25	3078897	5	70	24,5	16	33	42	30	77	3/4"
32	3078920	3	42	31,5	18	42,5	53	39	80	1"
40	3040292	3	30	39,4	20,5	54	64	43	111	1-1/4"

Ball Valve



DN	Sap Code	Bag	Box	d1 (mm)	L1(min) (mm)	A (mm)	k (mm)	L (mm)
20	3079033	5	120	19,5	14,5	50	56	68
25	3079034	5	120	24,5	16	50	56	68
32	3079035	3	80	31,5	18	54	56	75

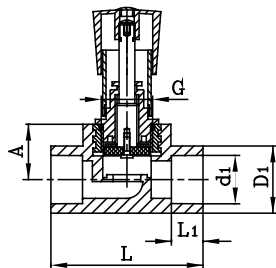


40	3070085	4	48	39,4	20,5	71	119	89
50	3070086	2	28	49,4	23,5	78	119	12
63	3070087	1	15	62,5	27,5	90	157	128
75	3070088	1	12	74,7	30	100	157	148



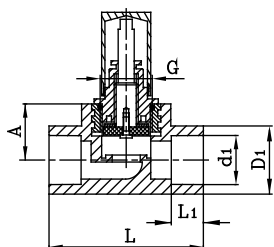
Chrome Valve

DN	Sap Code	Bag	Box	d1 (mm)	L1(min) (mm)	D1 (mm)	A (mm)	L (mm)	G (mm)
20	3072159	1	60	19,5	14,5	28,5	26	72	3/4"
25	3040102	1	60	24,5	16	33,5	30	77	3/4"
32	3040103	1	50	31,5	18	42,5	39	80	1"



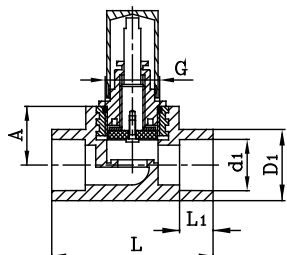
Valve Round Cap

DN	Sap Code	Bag	Box	d1 (mm)	L1(min) (mm)	D1 (mm)	A (mm)	L (mm)	G (mm)
20	3072165	1	60	19,5	14,5	28,5	26,5	72	3/4"
25	3052748	1	60	24,5	16	33,5	30	77	3/4"
32	3052749	1	50	31,5	18	43	38,5	80,5	1"



Decorative Valve

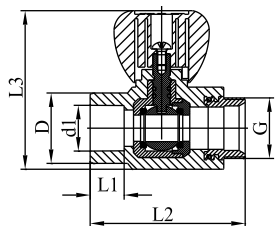
DN	Sap Code	Bag	Box	d1 (mm)	L1(min) (mm)	D1 (mm)	A (mm)	L (mm)	G (mm)
20	3072162	1	60	19,5	14,5	28,5	26,5	72	3/4"
25	3051254	1	60	24,5	16	33,5	30	77	3/4"
32	3051255	1	50	31,5	18	42,5	39	80	1"



Radiator Valve Straight



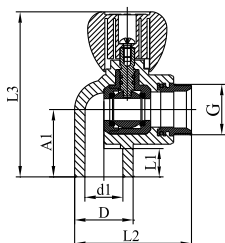
DN	Sap Code	Bag	Box	d1 (mm)	L1(min) (mm)	D (mm)	L2 (mm)	L3 (mm)	G (mm)
20	4047847	5	80	19,5	14,5	30	66	68	3/4"

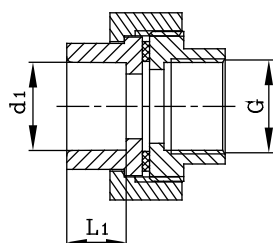


Radiator Valve Elbow



DN	Sap Code	Bag	Box	d1 (mm)	L1(min) (mm)	D (mm)	A1 (mm)	L2 (mm)	L3 (mm)	G (mm)
20	4047846	5	80	19,5	14,5	30	34,5	60	85	3/4"

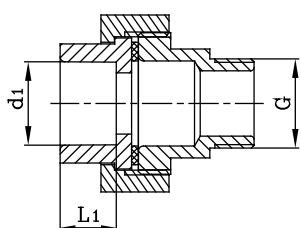




Metal Female Threaded Union (Hexagonal Shaped)

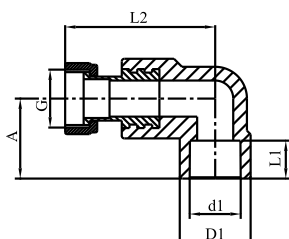
DN	Sap Code	Bag	Box	d1 (mm)	L1(min) (mm)	G (mm)
20x1/2"	3040217	10	120	19,5	14,5	1/2"
25x3/4"	3040218	10	80	24,5	16	3/4"
32x3/4"	3040219	5	60	31,5	18	3/4"
32x1"	3040220	5	60	31,5	18	3/4"
40x1 1/4"	3040221	2	24	39,4	20,5	1-1/4"
50x1 1/2"	3040222	2	24	49,4	23,5	1-1/2"
63x2"	3040223	2	18	62,5	27,5	2"

Metal Male Threaded Union (Hexagonal Shaped)



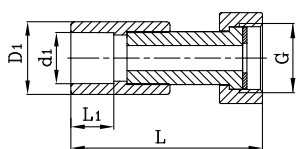
DN	Sap Code	Bag	Box	d (mm)	L1(min) (mm)	G (mm)
20x1/2"	3040224	10	120	19,5	14,5	1/2"
25x3/4"	3040225	10	80	24,5	16	3/4"
32x3/4"	3040226	5	50	31,5	18	3/4"
32x1"	3040227	5	50	31,5	18	1
40x1 1/4"	3040228	2	24	39,4	20,5	1-1/4"
50x1 1/2"	3040229	2	20	49,4	23,5	1-1/2"
63x2"	3040230	2	16	62,5	27,5	2"

Shifting Elbow with Metal Transition



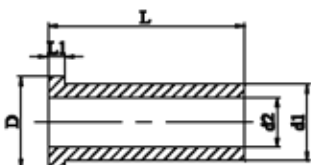
DN	Sap Code	Bag	Box	d1 (mm)	L1(min) (mm)	D1 (mm)	A (mm)	L2 (mm)	G (mm)
20x1/2	3040164	300	60	19,5	14,5	28,5	30	45	1/2"
25x3/4	3040165	250	60	24,5	16	33,5	33	53	3/4"

Shifting Union with Metal Transition



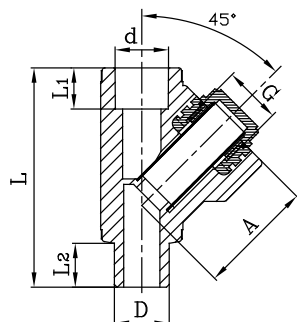
DN	Sap Code	Bag	Box	d1 (mm)	L1(min) (mm)	D1 (mm)	L (mm)	G (mm)
20x1/2	4047821	30	300	19,5	14,5	28,5	57	1/2"
20x3/4	4047822	25	250	19,5	14,5	29	59	3/4"
25x1/2	4047823	25	250	24,5	16	33,5	59	1/2"
25x3/4	4047824	25	250	24,5	16	33	59	3/4"
25x1	4065369	20	200	24,5	16	42,5	72	1"

Shifting Union With Plastic Transition



DN	Sap Code	d1 (mm)	D2 (mm)	D (mm)	L (mm)	L1 (mm)
25x1	3081758	25,0	16,2	29,8	64,5	5,4

Strainer Y with Filter



DN	Sap Code	Bag	Box	d1 (mm)	L1(min) (mm)	D (mm)	D2 (mm)	L (mm)	G (mm)
20x1/2	3040203	20	200	19,5	14,5	30	41	80	1/2"
25x3/4	3040204	10	120	24,5	16	35	46	101,5	3/4"

Exceptional Quality Starts with Flawless Installation



wavin

An Orbia business.

Accessories

Welding Head



DN	Sap Code	Box
20	3033427	50
25	3033428	50
32	3033429	50
40	3033430	50
50	3033431	50
63	3033432	30
75	3033433	30
90	3033434	30
110	3033435	20
125	3033436	10



Cutter

DN	Sap Code	Box
20-25-32	20-25-32	30
40-63	40-63	20



Welding Machine Set

Sap Code	Diameter	Welding Head Diameter in Set (mm)	Box)
3033236	16-75 mm	20-25-32-40	5



Sap Code	Diameter	Welding Head Diameter in Set (mm)	Box)
4083465	16-40 mm	20-25-32-40	5



Sap Code	Diameter	Welding Head Diameter in Set (mm)	Box)
4083464	50-110 mm	50-63-75	5



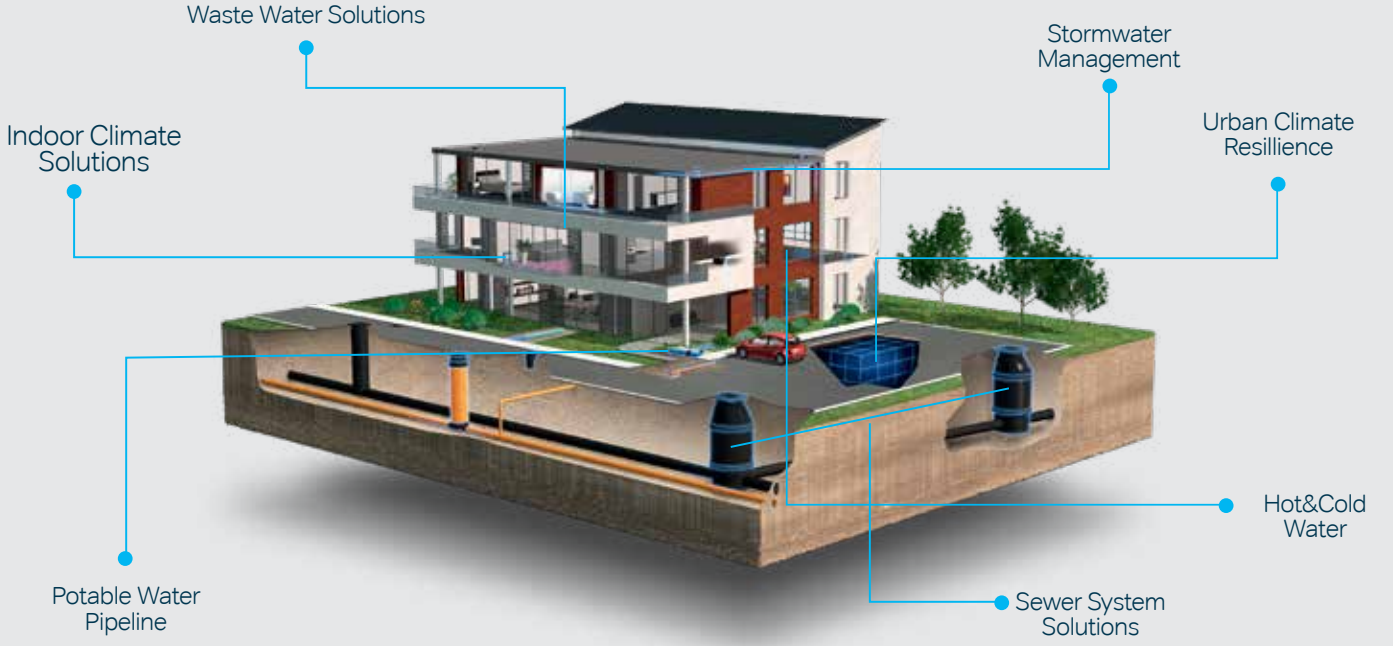
Sap Code	Diameter	Welding Head Diameter in Set (mm)	Box)
4083463*	50-110 mm	-	5

*Only welding machine in a cartoon box. Welding heads needs to be ordered additionally.

Wavin PP-R Fusion Welding Machine Comparison Table



	CM01-SET	CM02-SET	CM04-SINGLE	CM04-SET
SAP Code	3033236	4083465	4083463	4083464
Power	850+650=1500W	700W	1000+1000=2000W	1000+1000=2000W
Resistance	Ø8mm, stainless stell, double	Ø6mm, stainless stell, single	Ø8mm, stainless stell, double	Ø8mm, stainless stell, double
Voltage	220-240V	220-240V	220-240V	220-240V
Frequency	50/60Hz	50/60Hz	50/60Hz	50/60Hz
Working Temp	270°C	270°C	270°C	270°C
Wire	3x1,5mm2 200cm 200°C fireproof	3x1,5mm2 200cm 200°C fireproof	3x1,5mm2 200cm 200°C fireproof	3x1,5mm2 200cm 200°C fireproof
Welding Capacity	16-75mm	16-40mm	50-110 mm	50-110 mm
On/off Switch	Double switch with light	None	Double switch with light	Double switch with light
Signal Lamp	2 pc	2 pc	2 pc	2 pc
Welding Heads in the set	20-25-32-40	20-25-32-40	-	50-63-75
Head Area	3 on side	3 on side	1 on side	1 on side
Other Accessories	Cutter, stand, water level, measure tape, allen key, head opener	Cutter, stand, allen key, head opener	Stand	Cutter, stand, allen key, head opener



**Hot&Cold Water | Indoor Climate Solutions | Stormwater Management | Waste Water Solutions
Potable Water Pipeline | Sewer System Solutions**

wavin

orbia

Wavin is part of Orbia, a group of companies
that masters some of the world's greatest challenges.
United by a common goal:
To "Advance life around the world."

Wavin TR Plastik Sanayi A.Ş. | Güzelevler Mah.Girne Bulvarı No: 294/A Yüreğir / Adana
Web www.wavin.com.tr | E-mail wavin.tr.info@wavin.com

Wavin is engaged in a continuous product development program and therefore reserves the right to change the specifications of its products without prior notice. All information in this publication is given in good faith and is correct at the time of publication. However, no liability can be accepted for any errors, omissions or incorrect assumptions.

©2025 Wavin | Wavin reserves the right to make changes without prior notice. Due to continuous product development, changes in specifications may occur. Installation must be in accordance with the installation instructions.