



Catalogue of Products

# Wavin Ekoplastik PP-R/PP-RCT Piping System

Water distribution  
Heating and cooling



An Orbia business.

2024



## Making the sustainable, attainable

Sustainable thinking is good. Sustainable action is better. Better for the communities that we live in. Better for the planet that we share.

As a market leading contributor to the built environment, our sights are firmly set on leading our industry in sustainability by 2025. We're backing this ambition with real investment, real action, real outcomes and real leadership. Ultimately, our goal is to achieve Net Zero Carbon emissions by 2050.

Working with our customers, users and suppliers, we'll design out carbon from every product and process that we're responsible for. Our focus throughout will be to build healthier, more sustainable environments for all.

Our sustainability journey is well and truly underway at Wavin.

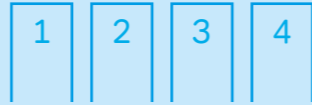
Let's work together to help build a better future for generations to come.

# Our purpose

## Building healthy, sustainable environments

There are four pillars driving our sustainability journey, selected to reflect where we can contribute to the United Nation's published Sustainable Development Goals. These pillars form the foundation of our purpose: to build healthy, sustainable environments.

While we build and create value through our products and services, we do so in a mindful way – by using as much recycled material as possible, reducing energy consumption and waste, and keeping a close eye on our footprint. In other words, doing our utmost to create a sustainable future.



The four pillars form the foundation of our purpose: to build healthy, sustainable environments



### Safe and efficient water supply

Future generations face a 40% shortfall between water supply and demand. Alongside other experts, Wavin is working to deliver safe and clean water security through enhanced rainwater reuse, the digitalisation of water management and more secure and durable piping.

### Better sanitation and hygiene

Outdated sewer systems are overwhelmed by a triple whammy of urbanisation, population growth and climate change. We're working towards a healthier future with long-lasting sanitation solutions that deliver greater capacity, fewer leaks, less clogging and better monitoring.



### Climate resilient cities

Smarter systems are needed to meet the five big challenges our cities face: floods, droughts, heat stress, ground water depletion and surface-water pollution. From roof to river, we are helping with connected water capture, attenuation, cleaning, reuse and transportation solutions to make cities climate resilient.

### Better building performance

Constrained by time, cost and product sourcing challenges, many of today's buildings fail to deliver on their expected performance. Through improved digital modelling, we can help our partners predict time and resource needs throughout the building process and provide intelligent solutions for better urban living.



# References

Wavin PP-RCT is a tested system that has been widely used all over Europe, Asia, Middle East, and other parts of the world for

decades. It is the number one choice for all professionals as well as owners.



National Theater  
Prague, Czech Republic



General sanitation  
Male, Maldives



Elementary School  
Třanovice, Czech Republic



Serenia Residence The Palm  
Dubai, United Arab Emirates



Residential building complex  
Bard Lakopark, Hungary



Circular Economy Project  
Breda, Netherlands

# Product sustainability

At Wavin, we're committed to measuring the real-world impacts of our products and services throughout their life cycle. By assessing their carbon footprint and understanding what effect they have on the environment, we can seek more sustainable alternatives and continue to refine our blueprint for building a better future.

# About us



**Wavin is a leading global provider of innovative water management solutions for resilient construction.**

As an Orbia business and a part of the business group 'Building & Infrastructure', **Wavin offers sustainability-based customer solutions for drinking water, sanitation, climate resilient cities and better building performance.** Redefining today's pipes and fittings industry with durable products and solutions that require less construction to install and innovating sustainable technologies for water collection and management, heating and cooling and a revolutionary road surface. Wavin headquarters are located in Zwolle, the Netherlands and it **serves 80+ countries on three continents with its 66 production sites located in 36 countries.** Wavin employs approximately 12 000 people

#### **Wavin is part of Orbia**

Wavin is part of Orbia, a **community of companies bound together by a shared purpose: to advance life around the world.** Orbia is a purpose-led company, passionate about

the challenges that define how people will live and thrive tomorrow. Our decades-long history began as a leading producer of commodities, and through investment and strategic growth we've become a **global leader in polymers, materials, and infrastructure.** Today, we operate in **41 countries and employ more than 22,000 people worldwide.**

#### **Solutions for Drinking Water**

**Delivering clean water efficiently and safely has become a world-wide problem.** Water is lost due to leakages and ageing networks. We need to improve the distribution of clean drinking water from source to tap. We will work towards these goals by **raising the quality and performance of high-pressure water distribution networks, improving safety levels of indoor drinking water supply, and building towards a new (smarter) ways of managing drinking water.**

# Wavin Ekoplastik PP-RCT with new dezincification resistant (DZR) lead-free brass

## The future of combined fittings



## Why Lead-Free Brass? Why DZR?

### Lead-Free

- ⌚ EU registration calls for stricter legislation regarding to lead content
- ⌚ Drinking Water Directive is now limiting the use of lead-free alloys for portable water
- ⌚ Wavin, an Orbia business, started the implementation of lead-free brass immediately, ahead of the legislation

### Dezincification resistant (DZR)

- ⌚ We had to look for a different way of product protection BUT:
  - ⌚ NickelZinc plating is already forbidden in many countries
  - ⌚ Passivated brass is not sufficient in regions using desalinated water in their water supply
- ⌚ DZR complies with ecological aspects as well as the requirements for the reliability and longevity of our products

# We are rocking ON BRASS!



# Wavin Ekoplastik PP-R/PP-RCT Piping System

## Contents

<b>Utilisation of Wavin Ekoplastik PP-R/PP-RCT Piping System</b> .....	<b>9</b>
Product Range Basic Information .....	11
Standard Products for Potable (Cold) and Hot Water and for Heating (I.) .....	12
Complete Offer of Fittings for Gypsum Wall Mounting (I.) .....	39
Special Fittings for Heating (I.) .....	40
Standard Products only for Potable (Cold) Water (II.).....	45
Products for Temporary Use (non Standard) (III.) .....	47
Accessories (IV.) .....	48
Wavin Ekoplastik PP-R/PP-RCT Piping System diameters 160-250 mm .....	56
Products for Potable (Cold) and Hot Water, compressed air, cooling and air conditioning (I.).....	57
Accessories (IV.) .....	61
Certificates .....	63

## Designation of Pipes S (SDR) instead of PN

Designation of pipes S (SDR) instead of PN in accordance with the ČSN EN ISO 15874 and DIN 8077 standards, it is necessary to designate the pipes as "S" or "SDR" instead of "PN".

$$SDR = 2S + 1$$

$$SDR \approx D/t$$

**Legend:**

D = outside diameter  
t = the wall thickness

- ⌚ The "PN" designation indicates the permissible operating pressure in bar for maximum temperature 20 °C and service life of 50 years.
- ⌚ For the lowest design coefficient according to "PN", the standards ČSN EN ISO 15874 and DIN 8077 no longer specify the pipe classification.
- ⌚ We designate the PPR tubes as "PN" for historical reasons (it used to be the former designation for the pressurised product range) although the values no longer correspond to the definition above.
- ⌚ The PP-RCT is a new type of material and the "PN" designation has not been implemented.
- ⌚ The operating parameters of the pipes are specified in the designation on the tubes and in the Assembly instructions.

The catalogue states the "PN" values for the pipes made of PP-RCT for easier orientation (the "PN" formula as specified in the standard was used in the calculation).

# Utilisation of Wavin Ekoplastik PP-RCT Piping System

The Wavin Ekoplastik PP-R/PP-RCT piping system can be used for distribution systems in housing, administration and community buildings as well as for industrial and agricultural installations.

The system is designed for transport of cold and hot water as well as floor heating. In case of observance of the rules specified hereinafter the system is also suitable for central heating systems.

The Wavin Ekoplastik PP-R/PP-RCT piping system can also be used for air distribution. It is possible to take further advantage of its chemical resistance and other system properties and use the system for transport of other liquids or gaseous or solid media; such usage, however, must not be done without a prior individual assessment.



## Benefits

- ⌚ complete set of pipes and fittings with sizes 16 - 125 mm
- ⌚ universal for all pipes from the Wavin Ekoplastik PP-RCT system
- ⌚ manufactured from granulate by leading European manufacturers
- ⌚ unique three-layer tube with basalt fibers
- ⌚ 4th generation material – PP-RCT

# Wavin Ekoplastik PP-R/PP-RCT Piping System

Product Range - Basic Information

## Major Areas of Application of Individual Pipe



Wavin Ekoplastik PP-R PN10	Wavin Ekoplastik PP-R PN16	Wavin Ekoplastik PP-R PN20	Wavin Ekoplastik PP-RCT EVO PLUS / EVO	Wavin Ekoplastik PP-RCT Stabi Plus	Wavin Ekoplastik PP-RCT Fiber Basalt Plus	Wavin Ekoplastik PP-RCT Fiber Basalt Clima
Ø 20–125 mm	Ø 16–125 mm	Ø 16–125 mm	Ø 16–125 mm	Ø 16–110 mm	Ø 20–125 mm	Ø 20–125 mm

	•	•	•	•	•	•
		•	•	•	•	•
		•	•	•	•	
				•	•	

# Multilayer pipes made from PP-RCT

## Multi-layer pipes made of the latest generation material - PP-RCT

**Wavin Ekoplastik PP-RCT Stabi Plus**

- 3× lesser thermal expansion
- oxygen barrier
- heating

**Wavin Ekoplastik PP-RCT Fiber Basalt Plus**

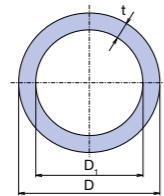
- 3× lesser thermal expansion
- no need to shave before welding
- hot water, heating

**Wavin Ekoplastik PP-RCT Fiber Basalt Clima**

- 3× lesser thermal expansion
- no need to shave before welding
- cold water, air conditioning

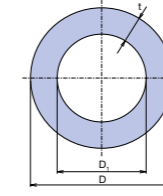
# Catalogue of Products

## Standard Products for Potable (Cold) and Hot Water and for Heating (I.)



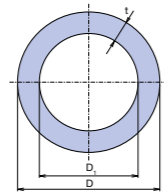
Wavin Ekoplastik PP-R pipe  
S 5 / PN 10 / SDR 11

CODE	S	D [mm]	D <sub>1</sub> [mm]	t [mm]	l [mm]	Packing [m]	Weight [kg/m]
STRO20P10X	5	20	15,6	2,2	4 000	100	0,121
STRO25P10X	5	25	20,4	2,3	4 000	60	0,164
STRO32P10X	5	32	26,2	2,9	4 000	40	0,258
STRO40P10X	5	40	32,6	3,7	4 000	24	0,413
STRO50P10X	5	50	40,8	4,6	4 000	16	0,636
STRO63P10X	5	63	51,4	5,8	4 000	12	1,004
STRO75P10X	5	75	61,4	6,8	4 000	8	1,401
STRO90P10X	5	90	73,6	8,2	4 000	4	2,014
STR110P10X	5	110	90,0	10,0	4 000	4	3,009
STR125P10X	5	125	102,2	11,4	4 000	4	3,910



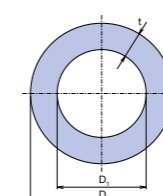
Wavin Ekoplastik PP-R pipe  
S 2,5 / PN 20 / SDR 6

CODE	S	D [mm]	D <sub>1</sub> [mm]	t [mm]	l [mm]	Packing [m]	Weight [kg/m]
STRO16P20X	2,5	16	10,6	2,7	4 000	160	0,107
STRO20P20X	2,5	20	13,2	3,4	4 000	100	0,169
STRO25P20X	2,5	25	16,6	4,2	4 000	60	0,259
STRO32P20X	2,5	32	21,2	5,4	4 000	40	0,423
STRO40P20X	2,5	40	26,6	6,7	4 000	24	0,657
STRO50P20X	2,5	50	33,4	8,3	4 000	16	1,013
STRO63P20X	2,5	63	42,0	10,5	4 000	12	1,611
STRO75P20X	2,5	75	50,0	12,5	4 000	8	2,288
STRO90P20X	2,5	90	60,0	15,0	4 000	4	3,332
STR110P20X	2,5	110	73,4	18,3	4 000	4	4,977
STR125P20X	2,5	125	83,4	20,8	4 000	4	6,470



Wavin Ekoplastik PP-R pipe  
S 3,2 / PN 16 / SDR 7,4

CODE	S	D [mm]	D <sub>1</sub> [mm]	t [mm]	l [mm]	Packing [m]	Weight [kg/m]
STRO16P16X	3,2	16	11,6	2,2	4 000	160	0,094
STRO20P16X	3,2	20	14,4	2,8	4 000	100	0,145
STRO25P16X	3,2	25	18,0	3,5	4 000	60	0,227
STRO32P16X	3,2	32	23,2	4,4	4 000	40	0,367
STRO40P16X	3,2	40	29,0	5,5	4 000	24	0,566
STRO50P16X	3,2	50	36,2	6,9	4 000	16	0,886
STRO63P16X	3,2	63	45,8	8,6	4 000	12	1,387
STRO75P16X	3,2	75	54,4	10,3	4 000	8	1,990
STRO90P16X	3,2	90	65,4	12,3	4 000	4	2,839
STR110P16X	3,2	110	79,8	15,1	4 000	4	4,274
STR125P16X	3,2	125	90,8	17,1	4 000	4	5,530



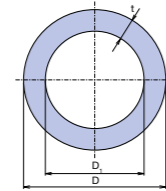
Wavin Ekoplastik PP-R pipe  
S 2,5 / PN 20 / SDR 6 - 3 m

CODE	S	D [mm]	D <sub>1</sub> [mm]	t [mm]	l [mm]	Packing [m]	Weight [kg/m]
STRO20P203	2,5	20	13,2	3,4	3 000	75	0,169
STRO25P203	2,5	25	16,6	4,2	3 000	45	0,259
STRO32P203	2,5	32	21,2	5,4	3 000	30	0,423

All pipes listed above could be manufactured in alternative lengths to special order by prior agreement.

# Catalogue of Products

## Standard Products for Potable (Cold) and Hot Water and for Heating (I.)

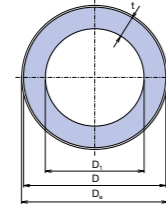


**Wavin Ekoplastik PP-RCT Evo Plus pipe**  
16 - 25 mm – S 3,2 / SDR 7,4 / PN 28 (calculation)

**Wavin Ekoplastik PP-RCT Evo pipe**  
32 - 125 mm – S 4 / SDR 9 / PN 22 (calculation)

CODE	S	D [mm]	D <sub>1</sub> [mm]	t [mm]	l [mm]	Packing [m]	Weight [kg/m]
STRE016S32	3,2	16	11,6	2,2	4 000	160	0,095
STRE020S32	3,2	20	14,4	2,8	4 000	100	0,148
STRE025S32	3,2	25	18,0	3,5	4 000	60	0,230
STRE032S4	4	32	24,8	3,6	4 000	40	0,313
STRE040S4	4	40	31,0	4,5	4 000	24	0,487
STRE050S4	4	50	38,8	5,6	4 000	16	0,755
STRE063S4	4	63	48,8	7,1	4 000	12	1,200
STRE075S4	4	75	58,2	8,4	4 000	8	1,690
STRE090S4	4	90	69,8	10,1	4 000	4	2,440
STRE110S4	4	110	85,4	12,3	4 000	4	3,620
STRE125S4	4	125	97,0	14,0	4 000	4	4,660

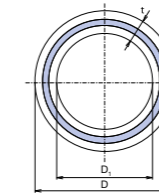
For optimal seam, we recommend the welding temperature of 260 °C and the heating time specified in the technical manual for the specific diameter of the pipe.



**Wavin Ekoplastik PP-RCT Stabi Plus pipe with perforated aluminum foil**

16 - 63 mm – S 3,2 / SDR 7,4 / PN 28 (calculation)  
75 - 110 mm – S 4 / SDR 9 / PN 22 (calculation)

CODE	S	D [mm]	D <sub>0</sub> [mm]	D <sub>1</sub> [mm]	t [mm]	l [mm]	Packing [m]	Weight [kg/m]
STRS016RCT	3,2	16	17,9	11,4	2,2	4 000	120	0,137
STRS020RCT	3,2	20	21,9	14,4	2,8	4 000	80	0,207
STRS025RCT	3,2	25	26,9	18,0	3,5	4 000	60	0,298
STRS032RCT	3,2	32	33,9	23,2	4,4	4 000	40	0,465
STRS040RCT	3,2	40	41,9	29,0	5,5	4 000	20	0,692
STRS050RCT	3,2	50	52,0	36,2	6,9	4 000	16	1,046
STRS063RCT	3,2	63	65,0	45,8	8,6	4 000	8	1,587
STRS075RCT	4	75	77,0	58,2	8,4	4 000	8	1,860
STRS090RCT	4	90	92,0	69,8	10,1	4 000	4	2,673
STRS110RCT	4	110	112,0	85,4	12,3	4 000	4	4,022

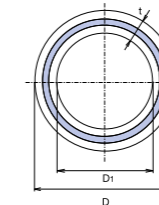


**Wavin Ekoplastik PP-RCT Fiber Basalt Plus pipe**  
20 - 63 mm – S 3,2 / SDR 7,4 / PN 28 (calculation)  
75 - 125 mm – S 4 / SDR 9 / PN 22 (calculation)

Diameters 75 - 125 mm SDR 7,4 can be made to order.

CODE	S	D [mm]	D <sub>1</sub> [mm]	t [mm]	l [mm]	Packing [m]	Weight [kg/m]
STRFB020TRCT	3,2	20	14,4	2,8	4 000	100	0,153
STRFB025TRCT	3,2	25	18,0	3,5	4 000	60	0,239
STRFB032TRCT	3,2	32	23,2	4,4	4 000	40	0,385
STRFB040TRCT	3,2	40	29,0	5,5	4 000	24	0,599
STRFB050TRCT	3,2	50	36,2	6,9	4 000	16	0,941
STRFB063TRCT	3,2	63	45,8	8,6	4 000	12	1,471
STRFB075TRCT	4	75	58,2	8,4	4 000	8	1,764
STRFB090TRCT	4	90	69,8	10,1	4 000	4	2,546
STRFB110TRCT	4	110	85,4	12,3	4 000	4	3,781
STRFB125TRCT*	4	125	97,0	14,0	4 000	4	4,891

\* Job-order manufacture, delivery date 30 days.



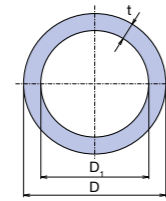
**Wavin Ekoplastik PP-RCT Fiber Basalt Clima pipe**  
20 - 25 mm – S 4 / SDR 9 / PN 22 (calculation)  
32 - 125 mm – S 5 / SDR 11 / PN 18 (calculation)

CODE	S	D [mm]	D <sub>1</sub> [mm]	t [mm]	l [mm]	Packing [m]	Weight [kg/m]
TTRFBC020TRCT	4	20	15,4	2,3	4 000	100	0,128
TTRFBC025TRCT	4	25	19,4	2,8	4 000	60	0,199
TTRFBC032TRCT	5	32	26,2	2,9	4 000	40	0,269
TTRFBC040TRCT	5	40	32,6	3,7	4 000	24	0,428
TTRFBC050TRCT	5	50	40,8	4,6	4 000	16	0,664
TTRFBC063TRCT	5	63	51,4	5,8	4 000	12	1,050
TTRFBC075TRCT*	5	75	61,4	6,8	4 000	8	1,501
TTRFBC090TRCT*	5	90	73,6	8,2	4 000	4	2,122
TTRFBC110TRCT*	5	110	90,0	10,0	4 000	4	3,160
TTRFBC125TRCT*	5	125	102,2	11,4	4 000	4	4,082

\* Job-order manufacture, delivery date 30 days.

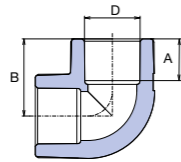
# Catalogue of Products

## Standard Products for Potable (Cold) and Hot Water and for Heating (I.)



Pipe in Coil

CODE 100 m	CODE 200 m	S (PN)	SDR	D [mm]	t [mm]	l [m]	Packing	Weight [kg/m]
STRK016P17		3,2 (16)	7,4	16	2,2	100	1	0,094
STRK020P11	STRK020P10	5,0 (10)	11	20	2,2	100 / 200	1	0,121
STRK020P17	STRK020P16	3,2 (16)	7,4	20	2,8	100 / 200	1	0,145
STRK016P21	STRK016P20	2,5 (20)	6	16	2,7	100 / 200	1	0,107
STRK020P21	STRK020P20	2,5 (20)	6	20	3,4	100 / 200	1	0,169

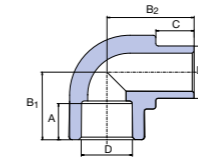


Elbow 90°

CODE	D [mm]	A [mm]	B [mm]	Packing I.	Packing II.	Weight [kg/pc]
SKO01690XX	16	13,0	23,2	20	280	0,010
SKO02090RCT*	20	14,5	26,8	20	260	0,018
SKO02590RCT*	25	16,0	31,0	20	140	0,030
SKO03290RCT*	32	18,0	36,5	10	90	0,039
SKO04090RCT*	40	20,5	43,0	5	50	0,066
SKO05090RCT*	50	23,5	51,0	10	30	0,125
SKO06390RCT*	63	27,5	60,0	5	15	0,240
SKO07590RCT*	75	30,0	70,1	1	6	0,399
SKO09090RCT*	90	33,0	80,6	1	6	0,600
SKO11090RCT*	110	37,0	94,6	1	4	1,016
SKO12590RCT**	125	40,0	106,6	1	2	1,481

\* Material PP-RCT.

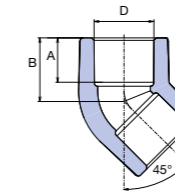
\* Information about delivery on request.



Elbow 90° Internal / External

CODE	D, D <sub>3</sub> [mm]	A [mm]	B <sub>1</sub> [mm]	B <sub>2</sub> [mm]	C [mm]	Packing I.	Packing II.	Weight [kg/pc]
SKO116XXXX	16	13,0	21,3	25,0	12,0	20	340	0,006
SKO120RCT*	20	14,5	26,8	30,3	13,0	20	260	0,014
SKO125RCT*	25	16,0	31,0	35,0	14,0	20	180	0,024
SKO132RCT*	32	18,0	36,5	42,2	16,0	20	120	0,033

\* Material PP-RCT.

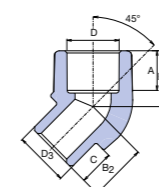


Elbow 45°

CODE	D [mm]	A [mm]	B [mm]	Packing I.	Packing II.	Weight [kg/pc]
SKO01645XX	16	13,0	18,7	20	300	0,008
SKO02045RCT*	20	14,5	20,8	20	300	0,014
SKO02545RCT*	25	16,0	24,0	20	160	0,024
SKO03245RCT*	32	18,0	27,0	10	100	0,030
SKO04045RCT*	40	20,5	31,5	5	60	0,052
SKO05045RCT*	50	23,5	36,5	5	20	0,092
SKO06345RCT*	63	27,5	43,0	5	10	0,188
SKO07545RCT*	75	30,0	48,1	2	6	0,272
SKO09045RCT*	90	33,0	54,5	1	6	0,406
SKO11045RCT*	110	37,0	62,1	1	6	0,709
SKO12545RCT**	125	40,0	69,8	1	3	1,048

\* Material PP-RCT.

\* Information about delivery on request.



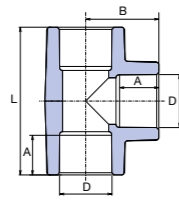
Elbow 45° Internal / External

CODE	D, D <sub>3</sub> [mm]	A [mm]	B <sub>1</sub> [mm]	B <sub>2</sub> [mm]	C [mm]	Packing I.	Packing II.	Weight [kg/pc]
SKO11645XX	16	13,0	18,7	18,7	12,0	10	300	0,008
SKO12045RCT*	20	14,5	20,8	21,5	13,0	10	280	0,012
SKO12545RCT*	25	16,0	24,0	24,0	14,0	10	100	0,026
SKO13245RCT*	32	18,0	27,0	27,0	16,0	20	120	0,032

\* Material PP-RCT.

# Catalogue of Products

## Standard Products for Potable (Cold) and Hot Water and for Heating (I.)

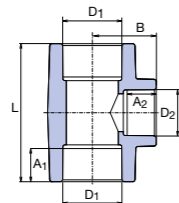


Tee

CODE	D [mm]	A [mm]	B [mm]	L [mm]	Packing I.	Packing II.	Weight [kg/pc]
STK016XXXX	16	13,0	23,2	46,4	20	140	0,012
STK020RCTX*	20	14,5	27,0	54,0	20	180	0,022
STK025RCTX*	25	16,0	32,0	60,0	20	100	0,038
STK032RCTX*	32	18,0	35,7	73,0	10	60	0,049
STK040RCTX*	40	20,5	38,5	86,2	5	40	0,084
STK050RCTX*	50	23,5	51,0	102,0	5	20	0,158
STK063RCTX*	63	27,5	61,5	123,0	5	10	0,317
STK075RCTX*	75	30,0	70,1	140,2	1	6	0,485
STK090RCTX*	90	33,0	80,6	161,2	1	6	0,742
STK110RCTX*	110	37,0	94,6	189,2	1	3	1,231
STK125RCTX**	125	40,0	105,5	211,0	1	2	1,764

\* Material PP-RCT.

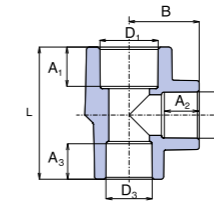
\*\* Information about delivery on request



Reducing Tee

CODE	D <sub>1</sub> [mm]	D <sub>2</sub> [mm]	A <sub>1</sub> [mm]	A <sub>2</sub> [mm]	L [mm]	B [mm]	Packing I.	Packing II.	Weight [kg/pc]
STKR02016X	20	16	14,5	13,0	53,0	23,0	20	160	0,018
STKR02520RCT*	25	20	16,0	14,5	55,0	29,0	20	160	0,032
STKR03220RCT*	32	20	18,0	14,5	67,0	34,4	10	80	0,035
STKR03225RCT*	32	25	18,0	16,0	66,0	34,4	10	70	0,037
STKR04020RCT*	40	20	20,5	14,5	66,0	37,0	10	50	0,056
STKR04025RCT*	40	25	20,5	16,0	71,0	38,5	10	50	0,062
STKR04032RCT*	40	32	20,5	18,0	78,0	41,5	5	40	0,071
STKR05025RCT*	50	25	23,5	16,0	77,0	43,0	5	40	0,104
STKR05032RCT*	50	32	23,5	18,0	84,0	46,0	5	20	0,116
STKR05040RCT*	50	40	23,5	20,5	92,0	48,0	5	15	0,132
STKR06325RCT*	63	25	27,5	16,0	85,0	49,9	5	10	0,167
STKR06332RCT*	63	32	27,5	18,0	92,0	52,0	5	20	0,195
STKR06340RCT*	63	40	27,5	20,5	100,0	54,6	5	20	0,230
STKR06350RCT*	63	50	27,5	23,5	110,0	57,2	5	15	0,255
STKR07540RCT*	75	40	30,0	20,5	115,4	63,5	1	6	0,382
STKR07550RCT*	75	50	30,0	23,5	115,4	63,5	1	6	0,360
STKR07563RCT*	75	63	30,0	27,5	128,4	67,5	1	6	0,360
STKR09075RCT*	90	75	33,0	30,0	146,2	77,7	1	2	0,605

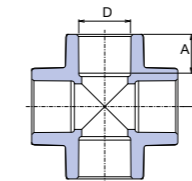
\* Material PP-RCT.



Reducing Tee

CODE	D <sub>1</sub> [mm]	D <sub>2</sub> [mm]	D <sub>3</sub> [mm]	A <sub>1</sub> [mm]	A <sub>2</sub> [mm]	A <sub>3</sub> [mm]	L [mm]	B [mm]	Packing I.	Packing II.	Weight [kg/pc]
STKR0252020RCT*	25	20	20	16,0	14,5	14,5	55,2	29,3	10	120	0,028
STKR0322020RCT*	32	20	20	18,0	14,5	14,5	57,3	32,8	10	50	0,040
STKR0322025RCT*	32	20	25	18,0	14,5	16,0	58,9	32,8	10	50	0,044
STKR0322525RCT*	32	25	25	18,0	18,0	16,0	66,0	34,4	10	50	0,052

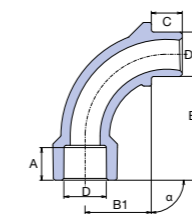
\* Material PP-RCT.



Cross Piece

CODE	D [mm]	A [mm]	B [mm]	Packing I.	Packing II.	Weight [kg/pc]
SKRIO20RCT*	20	14,5	26,3	20	100	0,024
SKRIO25RCT*	25	16,0	30,1	20	100	0,042
SKRIO32RCT*	32	18,0	35,0	10	40	0,070
SKRIO40RCT*	40	20,5	42,0	10	30	0,128

\* Material PP-RCT.



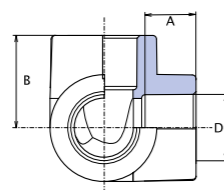
Bend

CODE	D [mm]	D <sub>3</sub> [mm]	A [mm]	B <sub>1</sub> [mm]	B <sub>2</sub> [mm]	C [mm]	α	Packing I.	Packing II.	Weight [kg/pc]
SO02090RCT*	20	20	14,5	30,0	56,0	13,6	90°	20	140	0,022
SO02590RCT*	25	25	16,0	38,0	67,0	14,6	90°	10	100	0,036
SO03290RCT*	32	32	18,0	38,0	69,0	15,9	90°	10	80	0,043

\* Material PP-RCT.

# Catalogue of Products

## Standard Products for Potable (Cold) and Hot Water and for Heating (I.)



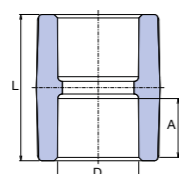
Three-Way Elbow

CODE	D [mm]	A [mm]	B [mm]	Packing I.	Packing II.	Weight [kg/pc]
SKRIO20RCT*	20	14,5	26,8	10	100	0,020
SKRIO25RCT*	25	16,0	29,5	10	80	0,032
SKRIO32RCT*	32	18,0	35,0	5	40	0,062
SKRIO40RCT*	40	20,5	41,5	5	30	0,108

\* Material PP-RCT.

CODE	D [mm]	A [mm]	B [mm]	Packing I.	Packing II.	Weight [kg/pc]
TKRIO20RCT*	20	14,5	26,8	10	100	0,020
TKRIO25RCT*	25	16,0	29,5	10	80	0,032
TKRIO32RCT*	32	18,0	35,0	5	40	0,062
TKRIO40RCT*	40	20,5	41,5	5	30	0,108

\* Material PP-RCT.

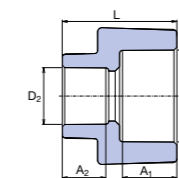


Socket

CODE	D [mm]	A [mm]	L [mm]	Packing I.	Packing II.	Weight [kg/pc]
SNA016XXX	16	13,0	33,0	20	280	0,006
SNA020RCTX*	20	14,5	34,6	20	360	0,010
SNA025RCTX*	25	16,0	37,8	20	220	0,018
SNA032RCTX*	32	18,0	42,0	20	120	0,030
SNA040RCTX*	40	20,5	48,0	10	80	0,041
SNA050RCTX*	50	23,5	54,0	10	70	0,061
SNA063RCTX*	63	27,5	63,0	5	30	0,127
SNA075RCTX*	75	30,0	68,0	1	25	0,172
SNA090RCTX*	90	33,0	74,2	1	12	0,275
SNA110RCTX*	110	37,0	85,2	1	4	0,472
SNA125RCTX**	125	40,0	93,0	1	6	0,638

\* Material PP-RCT.

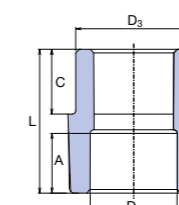
\*\* Information about delivery on request



Reducer

CODE	D <sub>1</sub> [mm]	D <sub>2</sub> [mm]	A <sub>1</sub> [mm]	A <sub>2</sub> [mm]	L [mm]	Packing I.	Packing II.	Weight [kg/pc]
SRE02520RCT*	25	20	16,0	14,5	34,0	20	260	0,014
SRE03220RCT*	32	20	18,0	14,5	38,0	20	160	0,018
SRE03225RCT*	32	25	18,0	16,0	40,0	20	140	0,019

\* Material PP-RCT.



Reducer Internal / External

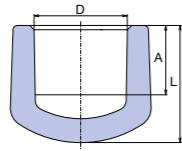
CODE	D <sub>3</sub> [mm]	D <sub>1</sub> [mm]	A [mm]	L [mm]	C [mm]	Packing I.	Packing II.	Weight [kg/pc]
SRE12016XX	20	16	13,0	32,5	13,0	20	300	0,006
SRE12520RCT*	25	20	14,5	34,0	14,0	20	360	0,010
SRE13220RCT*	32	20	14,5	34,0	16,0	20	300	0,012
SRE13225RCT*	32	25	16,0	35,0	16,0	20	200	0,013
SRE14020RCT*	40	20	14,5	36,3	18,5	10	150	0,021
SRE14025RCT*	40	25	16,0	38,3	18,5	10	150	0,022
SRE14032RCT*	40	32	18,0	41,3	18,5	20	160	0,023
SRE15025RCT*	50	25	16,0	41,3	21,3	10	60	0,035
SRE15032RCT*	50	32	18,0	43,3	21,3	10	60	0,035
SRE15040RCT*	50	40	20,5	43,3	21,3	10	80	0,035
SRE16325RCT*	63	25	16,0	45,3	25,3	5	60	0,060
SRE16332RCT*	63	32	18,0	47,3	25,3	5	60	0,056
SRE16340RCT*	63	40	20,5	44,3	25,3	5	60	0,058
SRE16350RCT*	63	50	23,5	54,0	25,3	5	50	0,076
SRE17540RCT*	75	40	20,5	56,9	28,9	5	20	0,094
SRE17550RCT*	75	50	23,5	51,4	28,9	5	20	0,100
SRE17563RCT*	75	63	27,5	62,9	28,9	1	20	0,112
SRE19050RCT*	90	50	23,5	57,9	33,4	1	30	0,157
SRE19063RCT*	90	63	27,5	56,9	33,4	1	25	0,150
SRE19075RCT*	90	75	30,0	69,4	33,4	1	20	0,185
SRE111075RCT*	110	75	30,0	60,5	39,4	1	12	0,251
SRE111090RCT*	110	90	33,0	79,4	39,4	1	12	0,303
SRE1125110RCT**	125	110	37,0	100,3	42,0	1	10	0,500

\* Material PP-RCT.

\*\* Information about delivery on request

# Catalogue of Products

## Standard Products for Potable (Cold) and Hot Water and for Heating (I.)

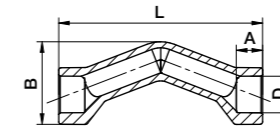


End Plug

CODE	D [mm]	A [mm]	L [mm]	Packing I.	Packing II.	Weight [kg/pc]
SZA016XXX	16	13,5	20,9	20	180	0,004
SZA020RCTX*	20	14,5	24,5	20	280	0,008
SZA025RCTX*	25	16,0	28,0	20	240	0,014
SZA032RCTX*	32	18,0	30,0	20	240	0,016
SZA040RCTX*	40	20,5	34,0	5	80	0,032
SZA050RCTX*	50	23,5	40,0	5	35	0,061
SZA063RCTX*	63	27,5	46,5	5	30	0,105
SZA075RCTX*	75	30,0	55,5	5	20	0,183
SZA090RCTX*	90	33,0	61,7	1	15	0,279
SZA110RCTX*	110	37,0	71,4	1	5	0,480
SZA125RCTX**	125	40,0	79,5	1	4	0,712

\* Material PP-RCT.

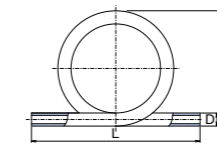
\*\* Information about delivery on request.



Crossover with Socket

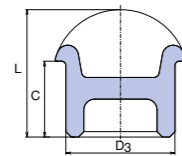
CODE	D [mm]	S (PN)	A [mm]	B [mm]	L [mm]	Packing I.	Packing II.	Weight [kg/pc]
SKRH020P20RCT*	20	2,5 (20)	14,5	42,6	117,0	10	80	0,031
SKRH025P20RCT*	25	2,5 (20)	16,0	54,8	135,0	10	50	0,060
SKRH032P20RCT*	32	2,5 (20)	18,0	69,4	200,0	10	30	0,099

\* Material PP-RCT.



Compensation Pipe S 2,5 / PN 20 / SDR 6

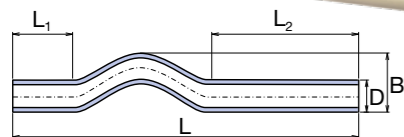
CODE	D [mm]	S	B [mm]	L [mm]	Packing I.	Packing II.	Weight [kg/pc]
SKS016P20X	16	2,5	185,0	320,0	10	10	0,090
SKS020RCTX	20	3,2	200,0	450,0	10	10	0,174
SKS025RCTX	25	3,2	210,0	440,0	10	10	0,264
SKS032RCTX	32	3,2	230,0	410,0	1	5	0,430
SKS040RCTX	40	3,2	290,0	450,0	1	5	0,786



End Plug Internal

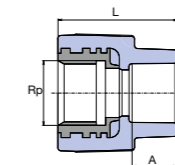
CODE	D <sub>3</sub> [mm]	C [mm]	L [mm]	Packing I.	Packing II.	Weight [kg/pc]
SZA120RCTE*	20	14,3	23,5	20	500	0,004

\* Material PP-RCT.



Crossover S 2,5 / PN 20 / SDR 6

CODE	D [mm]	S	B [mm]	L [mm]	L <sub>1</sub> [mm]	L <sub>2</sub> [mm]	Packing I.	Packing II.	Weight [kg/pc]
SKR016P20X	16	2,5	35,0	400,0	80,0	180,0	10	60	0,044
SKR020RCTX	20	3,2	47,0	400,0	80,0	180,0	10	50	0,070
SKR025RCTX	25	3,2	52,0	400,0	80,0	120,0	10	50	0,110
SKR032RCTX	32	3,2	65,0	390,0	64,0	106,0	5	20	0,174
SKR040RCTX	40	3,2	65,0	390,0	64,0	106,0	5	20	0,268



Reducing Sleeve with Metal Female Thread

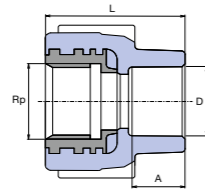
CODE	D [mm]	Rp	A [mm]	L [mm]	Packing I.	Packing II.	Weight [kg/pc]
SZI01620XX	16	1/2"	13,0	38,0	10	150	0,050
SZI02020RCT*	20	1/2"	14,5	39,0	10	250	0,056
SZI02025RCT*	20	3/4"	14,5	42,0	10	120	0,072
SZI02520RCT*	25	1/2"	16,0	40,5	10	100	0,062
SZI02525RCT*	25	3/4"	16,0	47,0	10	100	0,075
SZI03225RCT*	32	3/4"	18,0	45,0	10	100	0,081
SZI03232OKRCT**	32	1"	18,0	51,0	10	40	0,148
SZI04040RCT**	40	5/4"	20,5	65,5	5	30	0,260
SZI05050RCT**	50	6/4"	23,5	66,0	4	20	0,328
SZI06363RCT**	63	2"	27,5	72,5	2	14	0,616
SZI07575RCT**	75	2 1/2"	28,0	65,5	1	8	0,676
SZI09090RCT**	90	3"	32,0	90,0	1	5	0,954

\* Material PP-RCT, lead-free brass.

\*\* With octagon.

# Catalogue of Products

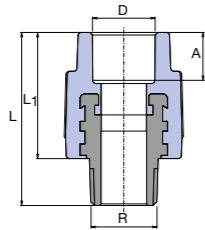
## Standard Products for Potable (Cold) and Hot Water and for Heating (I.)



Reducing Sleeve with Metal Female Thread with Cross

CODE	D [mm]	Rp	A [mm]	L [mm]	Packing I.	Packing II.	Weight [kg/pc]
SZI02020KRCT	20	1/2"	14,5	42,0	10	150	0,058

\* Material PP-RCT, lead-free brass.

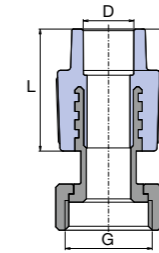


Reducing Sleeve with Metal Male Thread

CODE	D [mm]	R	A [mm]	L [mm]	L <sub>1</sub> [mm]	Packing I.	Packing II.	Weight [kg/pc]
SZE01620XX	16	1/2"	13,0	52,0	37,5	10	120	0,064
SZE02020RCT*	20	1/2"	14,5	53,5	39,0	10	140	0,062
SZE02025RCT*	20	3/4"	14,5	58,0	40,0	10	100	0,096
SZE02520RCT*	25	1/2"	16,0	55,5	41,0	10	100	0,066
SZE02525RCT*	25	3/4"	16,0	59,0	41,0	10	90	0,098
SZE03225RCT*	32	3/4"	18,0	60,0	44,0	10	100	0,105
SZE03232RCT*	32	1"	18,0	62,5	46,0	10	50	0,170
SZE03232OKRCT**	32	1"	18,0	69,5	42,0	10	50	0,204
SZE04040RCT**	40	5/4"	20,5	77,5	47,5	5	30	0,312
SZE05050RCT**	50	6/4"	23,5	81,6	51,0	4	20	0,460
SZE06363RCT**	63	2"	27,5	93,5	58,0	2	12	0,758
SZE07575RCT**	75	2 1/2"	30,0	110,0	69,7	1	8	0,885
SZE09090RCT**	90	3"	33,0	113,5	73,0	1	6	1,228

\* Material PP-RCT, lead-free brass.

\*\* With octagon.



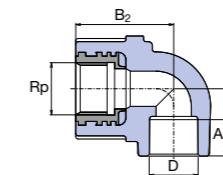
Metal Reducer with Cap Nut

CODE	D [mm]	G	A [mm]	L [mm]	Packing I.	Packing II.	Weight [kg/pc]
SZM01620XX	16	1/2"	13,0	32,0	10	200	0,044
SZM01625XX	16	3/4"	13,0	32,0	10	180	0,082
SZM02020XX	20	1/2"	14,5	40,0	20	200	0,048
SZM02025XX	20	3/4"	14,5	39,0	20	120	0,082
SZM02032XX	20	1"	14,5	39,0	5	80	0,152
SZM02525XX	25	3/4"	16,0	41,1	20	120	0,086
SZM02532XX	25	1"	16,0	41,0	4	80	0,154
SZM03240XX	32	5/4"	18,0	48,0	2	40	0,254

PMD\*

SZMD02025X	20	3/4"	14,5	39,0	10	120	0,084
------------	----	------	------	------	----	-----	-------

\* PMD – cap nut with the hole for the seal.



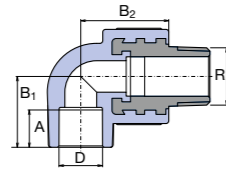
Elbow 90° with Metal Female Thread

CODE	D [mm]	Rp	A [mm]	B <sub>1</sub> [mm]	B <sub>2</sub> [mm]	Packing I.	Packing II.	Weight [kg/pc]
SKOI01620X	16	1/2"	13,0	25,2	31,0	10	120	0,062
SKOI02020RCT*	20	1/2"	14,5	27,0	34,5	10	100	0,062
SKOI02025RCT*	20	3/4"	14,5	27,0	40,0	10	80	0,082
SKOI02520RCT*	25	1/2"	16,0	31,0	36,0	10	100	0,070
SKOI02525RCT*	25	3/4"	16,0	30,0	41,0	10	70	0,090
SKOI03232RCT*	32	1"	18,0	36,0	51,0	10	40	0,168

\* Material PP-RCT, lead-free brass.

# Catalogue of Products

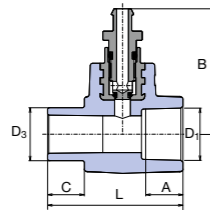
## Standard Products for Potable (Cold) and Hot Water and for Heating (I.)



Elbow 90° with Metal Male Thread

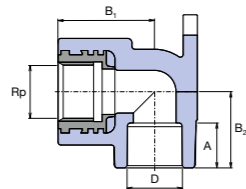
CODE	D [mm]	Rp	A [mm]	B <sub>1</sub> [mm]	B <sub>2</sub> [mm]	Packing I.	Packing II.	Weight [kg/pc]
SKOE01620X	16	1/2"	13,0	25,2	31,0	10	100	0,074
SKOE02020RCT*	20	1/2"	14,5	27,0	34,5	10	100	0,074
SKOE02025RCT*	20	3/4"	14,5	27,0	39,0	10	70	0,112
SKOE02520RCT*	25	1/2"	16,0	31,0	36,0	10	100	0,082
SKOE02525RCT*	25	3/4"	16,0	30,0	39,0	10	60	0,116
SKOE03232RCT*	32	1"	18,0	36,0	41,6	5	40	0,118

\* Material PP-RCT, lead-free brass.



Socket with Drain Valve Internal / External

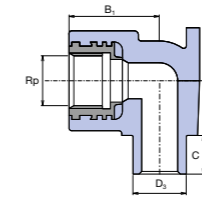
CODE	D [mm]	D <sub>3</sub> [mm]	A [mm]	L [mm]	B [mm]	C [mm]	Packing I.	Packing II.	Weight [kg/pc]
SNAV120XX	20	20	14,5	53,0	48,0	13,0	10	100	0,054
SNAV125XX	25	25	16,0	54,0	49,7	14,0	5	150	0,064
SNAV132XX	32	32	18,0	59,0	53,2	16,0	5	100	0,084



Elbow 90° for Wall Mounting

CODE	D [mm]	Rp	A [mm]	B <sub>1</sub> [mm]	B <sub>2</sub> [mm]	Packing I.	Packing II.	Weight [kg/pc]
SNK016XXXX	16	1/2"	13,0	32,0	23,2	10	100	0,064
SNK020XRCT*	20	1/2"	14,5	34,0	26,8	10	120	0,068
SNK02520RCT*	25	1/2"	16,0	36,0	27,5	10	80	0,072
SNK025XRCT*	25	3/4"	16,0	39,0	29,5	10	50	0,098

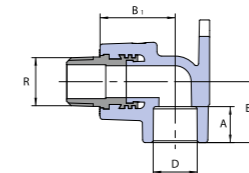
\* Material PP-RCT, lead-free brass.



Elbow 90° for Wall Mounting Internal / External

CODE	D [mm]	Rp	B <sub>1</sub> [mm]	B <sub>2</sub> [mm]	C [mm]	Packing I.	Packing II.	Maca [кг/6р]
SNK120XRCT	20	1/2"	35,0	35,0	11,0	10	80	0,068

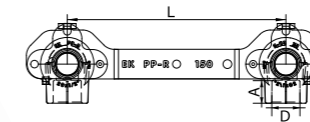
\* Material PP-RCT, lead-free brass.



Elbow 90° for Wall Mounting with Metal Male Thread

CODE	D [mm]	Rp	B <sub>1</sub> [mm]	B <sub>2</sub> [mm]	A [mm]	Packing I.	Packing II.	Weight [kg/pc]
SNKE02020RCT*	20	1/2"	34,0	32,2	14,5	10	115	0,072

\* Material PP-RCT, lead-free brass.



Wall Elbows with Holder

CODE	D [mm]	Rp	A [mm]	L [mm]	Packing I.	Packing II.	Weight [kg/pc]
SNKD02020RCT	20	1/2"	14,5	150	10	50	0,162



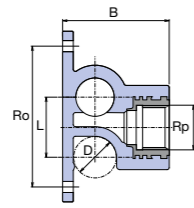
Holder for Wall Elbows

CODE	D [mm]	L [mm]	Packing I.	Packing II.	Weight [kg/pc]
SDNKXXXXXX	20	150	10	100	0,026

\* Material PP-RCT, lead-free brass.

# Catalogue of Products

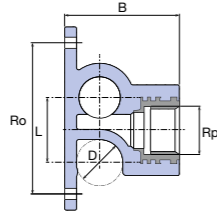
## Standard Products for Potable (Cold) and Hot Water and for Heating (I.)



Tee with Tap Connector

CODE	D [mm]	Rp [mm]	B [mm]	Ro [mm]	L [mm]	Packing I.	Packing II.	Weight [kg/pc]
SNKP020RCT	20	1/2"	50,0	66,0	28,5	10	100	0,080
SNKP02520RCT	25	1/2"	56,0	76,0	33,5	10	60	0,090

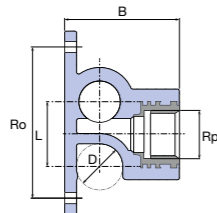
Material PP-RCT, lead-free brass.



Ending Wall Elbow Left

CODE	D [mm]	Rp [mm]	B [mm]	Ro [mm]	L [mm]	Packing I.	Packing II.	Weight [kg/pc]
SNK020KPXRCT	20	1/2"	50,0	66,0	28,5	5	80	0,066

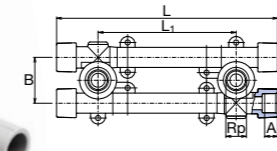
Material PP-RCT, lead-free brass.



Ending Wall Elbow Right

CODE	D [mm]	Rp [mm]	B [mm]	Ro [mm]	L [mm]	Packing I.	Packing II.	Weight [kg/pc]
SNK020KLRCT	20	1/2"	50,0	66,0	28,5	5	80	0,066

Material PP-RCT, lead-free brass.

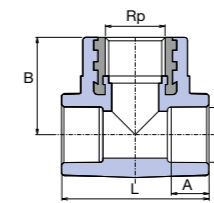


Wall Mounting Group with Tap Connectors

CODE	D [mm]	Rp [mm]	A [mm]	B [mm]	L <sub>1</sub> [mm]	L [mm]	Packing I.	Packing II.	Weight [kg/pc]
SNKK020RCT	20	1/2"	14,5	46,0	105/130/145	229,0	1	15	0,220
SNKK025RCT	25	1/2"	16,0	51,0	110/125/140	230,0	1	10	0,268

Material PP-RCT, lead-free brass.

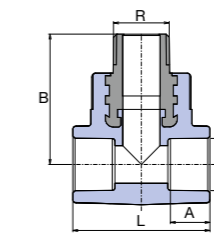
\* L1 – extension 100, 135, 150 mm, it is necessary to set right with eccentric parts.



Tee with Metal Female Thread

CODE	D [mm]	Rp [mm]	A [mm]	L [mm]	B [mm]	Packing I.	Packing II.	Weight [kg/pc]
STKI02020RCT	20	1/2"	14,5	51,5	34,0	10	100	0,068
STKI02520RCT	25	1/2"	16,0	80,0	40,0	10	80	0,076
STKI02525RCT	25	3/4"	16,0	80,0	40,0	5	60	0,094
STKI03220RCT	32	1/2"	18,0	71,0	40,5	5	40	0,106
STKI03225RCT	32	3/4"	18,0	71,0	42,0	5	30	0,118
STKI03232RCT	32	1"	18,0	80,0	55,0	5	25	0,186

Material PP-RCT, lead-free brass.



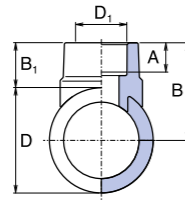
Tee with Metal Male Thread

CODE	D [mm]	Rp [mm]	A [mm]	L [mm]	B [mm]	Packing I.	Packing II.	Weight [kg/pc]
STKE02020RCT	20	1/2"	14,5	51,5	48,5	10	100	0,080
STKE02025RCT	20	3/4"	14,5	60,0	50,0	5	60	0,118
STKE02520RCT	25	1/2"	16,0	60,0	51,0	10	60	0,088
STKE02525RCT	25	3/4"	16,0	65,0	52,5	5	60	0,122
STKE03225RCT	32	3/4"	18,0	71,0	58,3	5	40	0,146
STKE03232RCT	32	1"	18,0	80,0	60,0	5	25	0,208

Material PP-RCT, lead-free brass.

# Catalogue of Products

## Standard Products for Potable (Cold) and Hot Water and for Heating (I.)

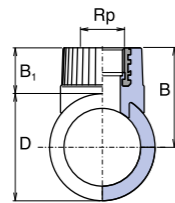


PP-RCT Weld in Saddle

CODE	D [mm]	D <sub>1</sub> [mm]	A [mm]	B <sub>1</sub> [mm]	B [mm]	Packing I.	Packing II.	Weight [kg/pc]
SNS06332RCT*	63	32	18,0	21,3	55,0	10	100	0,022
SNS07532RCT*	75	32	18,0	21,3	61,0	10	100	0,023
SNS09032RCT*	90	32	18,0	21,3	69,0	10	100	0,024
SNS11032RCT*	110	32	18,0	25,7	80,7	10	60	0,034
SNS11040RCT*	110	40	21,0	25,7	80,7	10	60	0,036
SNS12532RCT**	125	32	18,0	22,0	84,5	10	60	0,033
SNS12540RCT**	125	40	21,0	28,0	90,5	10	60	0,038
SNS12550RCT**	125	50	23,5	29,5	92,0	5	20	0,043
SNS12563RCT**	125	63	27,5	37,0	99,5	5	20	0,048

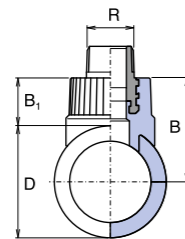
\* Material PP-RCT.

\*\* Information about delivery on request



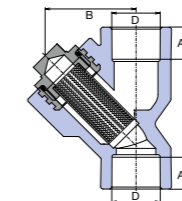
Weld in Saddle with Metal Female Thread

CODE	D [mm]	Rp	B <sub>1</sub> [mm]	B [mm]	Packing I.	Packing II.	Weight [kg/pc]
SNSI06325X	63	3/4"	27,0	58,5	10	80	0,084
SNSI07525X	75	3/4"	27,0	64,5	10	80	0,084
SNSI09025X	90	3/4"	27,0	72,0	10	80	0,084



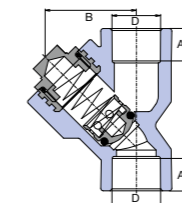
Weld in Saddle with Metal Male Thread

CODE	D [mm]	Rp	B <sub>1</sub> [mm]	B [mm]	Packing I.	Packing II.	Weight [kg/pc]
SNSE06325X	63	3/4"	44,8	76,3	10	70	0,112
SNSE07525X	75	3/4"	44,8	82,3	10	70	0,110
SNSE09025X	90	3/4"	44,8	89,8	10	70	0,110



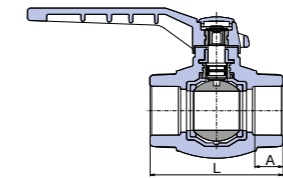
Filter

CODE	D [mm]	B [mm]	L [mm]	A [mm]	Packing I.	Packing II.	Weight [kg/pc]
SFI020XXXX	20	45,0	76,0	14,5	5	60	0,116
SFI025XXXX	25	45,0	82,0	16,0	5	40	0,134
SFI032XXXX	32	55,0	95,0	18,0	5	40	0,234



Back Flow Valve

CODE	D [mm]	B [mm]	L [mm]	A [mm]	Packing I.	Packing II.	Weight [kg/pc]
SZKL020XXX	20	45,0	76,0	14,5	5	60	0,136
SZKL025XXX	25	45,0	82,0	16,0	5	40	0,154
SZKL032XXX	32	55,0	95,0	18,0	5	40	0,266



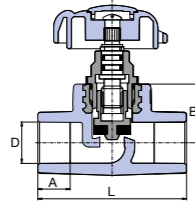
Ball Tap Plastic

CODE	D [mm]	A [mm]	L [mm]	Packing I.	Packing II.	Weight [kg/pc]
SVEK016XXX	16	13,0	59,5	10	60	0,092
SVEK020RCT*	20	14,5	65,0	10	50	0,116
SVEK025RCT*	25	16,0	71,0	10	40	0,168
SVEK032RCT*	32	18,0	85,0	10	20	0,294
SVEK040RCT*	40	20,5	100,0	5	10	0,544
SVEK050RCT*	50	23,5	115,0	1	6	0,874
SVEK063RCT*	63	27,5	134,0	1	5	1,278

\* Material PP-RCT, lead-free brass.

# Catalogue of Products

## Standard Products for Potable (Cold) and Hot Water and for Heating (I.)



Straight - Way Valve

CODE	D [mm]	A [mm]	B [mm]	L [mm]	Packing I.	Packing II.	Weight [kg/pc]
SVE020XXXX	20	14,5	27,5	69,0	10	50	0,140
SVE025XXXX	25	16,0	30,0	80,0	10	30	0,192
SVE032XXXX	32	18,0	39,0	89,0	5	30	0,380
SVE040XXXX	40	20,5	41,0	112,0	5	15	0,542
SVE050XXXX	50	23,5	48,0	136,0	1	10	0,732
SVE063XXXX	63	27,5	60,0	162,0	1	8	1,330



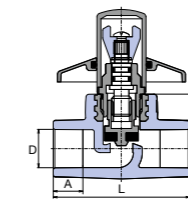
Spare parts / Flywheel

CODE	D [mm]	Packing I.	Packing II.	Weight [kg/pc]
STOCVM02025S	20 - 25	1	5	0,015
STOCVS03240S	32 - 40	1	5	0,028
STOCVV05063S	50 - 63	1	1	0,041



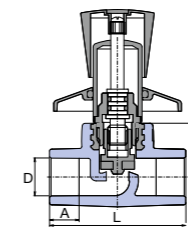
Spare parts / Valve top part

CODE	D [mm]	Packing I.	Packing II.	Weight [kg/pc]
VRV020XXXX	20	1	5	0,080
VRV025XXXX	25	1	5	0,129
VRV032XXXX	32	1	5	0,211
VRV040XXXX	40	1	1	0,280
VRV050XXXX	50	1	1	0,293
VRV063XXXX	63	1	1	0,460



Shut Off Valve Straight with Chrome Cove

CODE	D [mm]	A [mm]	B [mm]	L [mm]	Packing I.	Packing II.	Weight [kg/pc]
SVEPLK020X	20	14,5	27,5	69,0	5	30	0,208
SVEPLK025X	25	16,0	30,0	80,0	5	20	0,270



Shut Off Valve Deluxe Straight with Chrome Handle

CODE	D [mm]	A [mm]	B [mm]	L [mm]	Packing I.	Packing II.	Weight [kg/pc]
SVEPLR020X	20	14,5	27,5	69,0	5	20	0,338
SVEPLR025X	25	16,0	30,0	80,0	5	20	0,392



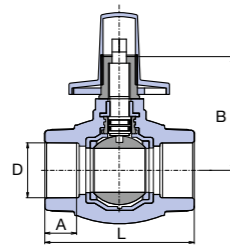
Valve Extension D 20, 25 mm

CODE	L [mm]	Packing	Weight [kg/pc]
VEPL020EXX	33	100	0,071

Extension for shut off valves straight Ø 20 and Ø 25 mm.

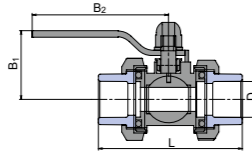
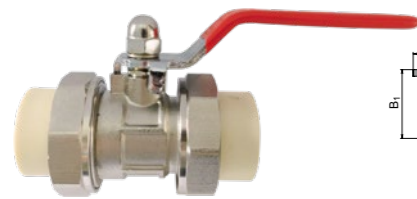
# Catalogue of Products

## Standard Products for Potable (Cold) and Hot Water and for Heating (I.)



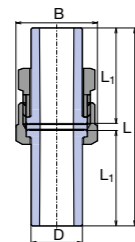
Shut off Ball Tap with Chrome Cover

CODE	D [mm]	A [mm]	B [mm]	L [mm]	Packing I.	Packing II.	Weight [kg/pc]
SVEKPLK020	20	14,5	67,0	69,0	5	30	0,254
SVEKPLK025	25	16,0	65,0	80,0	5	20	0,334



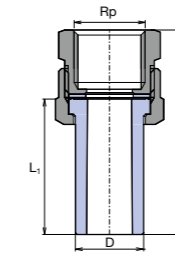
Shut off Ball - metal with plastic neck

CODE	D [mm]	L [mm]	B <sub>1</sub> [mm]	B <sub>2</sub> [mm]	Packing I.	Packing II.	Weight [kg/pc]
SVEKKS020X	20	81,0	46,0	80,0	5	25	0,293
SVEKKS025X	25	87,0	50,0	106,0	5	20	0,358



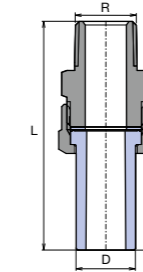
Coupling with Nut

CODE	D [mm]	B [mm]	L [mm]	L <sub>1</sub> [mm]	Packing I.	Packing II.	Weight [kg/pc]
SRS020XXXX	20	30,0	82,0	40,0	20	100	0,088
SRS025XXXX	25	38,0	82,0	40,0	20	100	0,142
SRS032XXXX	32	46,0	92,0	45,0	10	50	0,212
SRS040XXXX	40	58,0	112,0	55,0	5	30	0,288



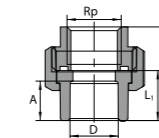
Spigot - Female Union

CODE	D [mm]	Rp	L [mm]	L <sub>1</sub> [mm]	Packing I.	Packing II.	Weight [kg/pc]
SSI02020XX	20	1/2"	60,0	40,0	10	150	0,086
SSI02525XX	25	3/4"	62,0	40,0	10	100	0,136
SSI03232XX	32	1"	70,0	45,0	10	60	0,220



Spigot - Male Union

CODE	D [mm]	R	L [mm]	L <sub>1</sub> [mm]	Packing I.	Packing II.	Weight [kg/pc]
SSE02020XX	20	1/2"	77,0	40,0	10	120	0,118
SSE02525XX	25	3/4"	80,0	40,0	10	70	0,196
SSE03232XX	32	1"	92,0	45,0	10	50	0,324

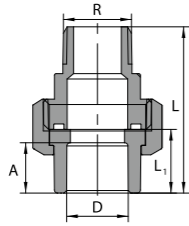


Screw Union with Socket - Female

CODE	D [mm]	Rp	L [mm]	L <sub>1</sub> [mm]	Packing I.	Packing II.	Weight [kg/pc]
SSH102020X	20	1/2"	37,5	19,5	10	100	0,122
SSH102525X	25	3/4"	46,5	23,0	10	80	0,213

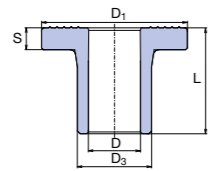
# Catalogue of Products

## Standard Products for Potable (Cold) and Hot Water and for Heating (I.)



Screw Union with Socket – Male

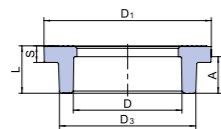
CODE	D [mm]	R	L [mm]	L <sub>1</sub> [mm]	Packing I.	Packing II.	Weight [kg/pc]
SSHE02020X	20	1/2"	52,5	19,5	10	100	0,142
SSHE02525X	25	3/4"	59,0	23,0	10	80	0,223



Flange Adaptor

CODE	D <sub>3</sub> [mm]	L [mm]	D [mm]	D <sub>1</sub> [mm]	S [mm]	Packing I.	Packing II.	Weight [kg/pc]
SLN040RCTX*	40	58,8	30,0	80,0	5,2	2	50	0,040
SLN050RCTX*	50	60,8	37,2	90,0	6,6	2	40	0,065
SLN063RCTX*	63	62,8	47,0	105,0	8,2	1	25	0,127
SLN075RCTX*	75	71,8	56,0	122,0	9,7	1	15	0,205
SLN090RCTX*	90	90,8	67,0	140,0	11,7	1	12	0,320
SLN110RCTX*	110	101,8	81,0	161,5	14,7	1	4	0,593

\* Material PP-RCT.

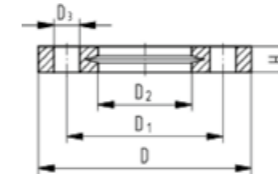


Flange Adaptor

CODE	D [mm]	D <sub>3</sub> [mm]	L [mm]	D <sub>1</sub> [mm]	S [mm]	A [mm]	Packing I.	Packing II.	Weight [kg/pc]
SLN125RCT**	125	157,0	55,0	190,0	16,0	40,0	1	8	0,548

\* Material PP-RCT.

\* Information about delivery on request.

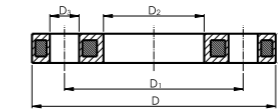


Flange PP-Glass Fiber Reinforced PN16

CODE	d [mm]	DN [mm]	D [mm]	D <sub>1</sub> [mm]	D <sub>2</sub> [mm]	D <sub>3</sub> [mm]	H [mm]	Y	Packing	Weight [kg/pc]
FF700409W*	40	32	140	100	51	18	20	4	40	0,244
FF700410W*	50	40	150	110	62	18	22	4	30	0,297
FF700411W*	63	50	165	125	78	18	24	4	25	0,362
FF700412W*	75	65	185	145	92	18	26	4	19	0,487
FF700513W*	90	80	200	160	108	18	27	8	15	0,544
FF700514W*	110	100	220	180	128	18	28	8	13	0,643
FF700516W*	140	125	250	210	158	18	30	8	10	0,842

\* Information about delivery on request.

Screw diameter M16 / Y – number of bore holes.



Flange PP – Steel PN 16

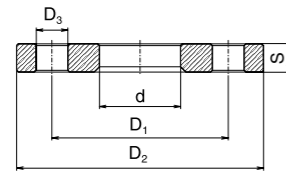
CODE	d [mm]	DN [mm]	D [mm]	D <sub>1</sub> [mm]	D <sub>2</sub> [mm]	D <sub>3</sub> [mm]	H [mm]	Y	Packing	Weight [kg/pc]
FF700209W*	40	32	140	100	51	18	16	4	40	0,621
FF700210W*	50	40	150	110	62	18	20	4	30	0,722
FF700211W*	63	50	165	125	78	18	20	4	25	1,084
FF700212W*	75	65	185	145	92	18	20	4	19	1,349
FF700213W*	90	80	200	160	108	18	20	8	15	1,390
FF700214W*	110	100	220	180	128	18	20	8	13	1,407
FF700216W*	140	125	250	210	158	18	26	8	10	2,318

\* Information about delivery on request.

Screw diameter M16 / Y – number of bore holes.

# Catalogue of Products

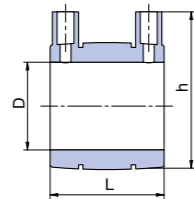
## Standard Products for Potable (Cold) and Hot Water and for Heating (I.)



Flange

CODE	d	D <sub>1</sub> [mm]	D <sub>2</sub> [mm]	d	D <sub>3</sub> [mm]	S [mm]	Y	Packing	Weight [kg/pc]
PRI040NXXX	40 / DN32	100,0	140,0	46,0	18,0	18,0	4	1	1,660
PRI050NXXX	50 / DN40	110,0	150,0	54,0	18,0	18,0	4	1	1,802
PRI063NXXX	63 / DN50	125,0	165,0	66,0	18,0	18,0	4	1	2,414
PRI075NXXX	75 / DN65	145,0	185,0	83,0	18,0	18,0	4	1	2,978
PRI090NXXX	90 / DN80	160,0	200,0	94,0	18,0	20,0	8	1	3,490
PRI110NXXX	110 / DN100	180,0	220,0	114,0	18,0	20,0	8	1	4,098
PRI125NXXX	125 / DN150	210,0	250,0	166,0	18,0	22,0	8	1	4,450

Y – number of bore holes



Electro – Fusion Socket

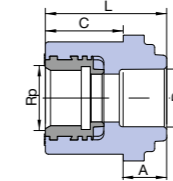
CODE	D <sub>1</sub> [mm]	L [mm]	h [mm]	Packing I.	Packing II.	Weight [kg/pc]
ENAO20PPRCT*	20	70	52	1	100	0,040
ENAO25PPRCT*	25	70	57	1	80	0,050
ENAO32PPRCT*	32	80	65	1	60	0,070
ENAO40PPRCT*	40	90	74	1	50	0,100
ENAO50PPRCT*	50	100	85	1	30	0,160
ENAO63PPRCT*	63	110	97	1	20	0,260
ENAO75PPRCT*	75	120	114	1	25	0,410
ENAO90PPRCT*	90	130	130	1	18	0,510
ENA110PPRCT*	110	140	152	1	8	0,800
ENA125PPRCT**	125	151	168	1	6	0,950

\* Material PP-RCT.

\*\* Job-order manufacture, delivery date 30 days.

# Catalogue of Products

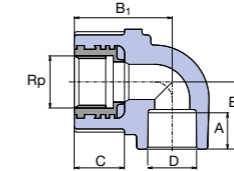
## Complete Offer of Fittings for Gypsum Wall Mounting (I.)



Reducing Sleeve for Gypsum Wall Mounting

CODE	D [mm]	Rp	A [mm]	C [mm]	L [mm]	Packing I.	Packing II.	Weight [kg/pc]
SZS02020RCT	20	1/2"	14,5	26,0	40,5	1	50	0,102

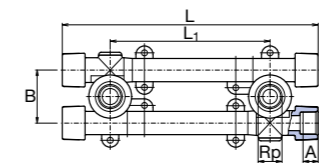
Material PP-RCT, lead-free brass.



Elbow for Gypsum Wall Mounting

CODE	D [mm]	Rp	A [mm]	B <sub>1</sub> [mm]	B <sub>2</sub> [mm]	C [mm]	Packing I.	Packing II.	Weight [kg/pc]
SNKS020SRCT	20	1/2"	15,0	44,0	27,0	26,0	1	50	0,114

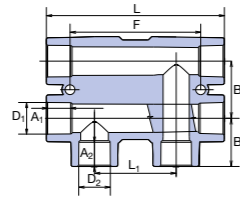
Material PP-RCT, lead-free brass.



Wall Mounting Group with Tap Connectors for Gypsum Wall

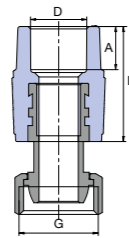
CODE	D [mm]	Rp	A [mm]	B [mm]	L <sub>1</sub> [mm]	C [mm]	L [mm]	Packing I.	Packing II.	Weight [kg/pc]
SNKK020SRCT	20	1/2"	14,5	49,0	100/135/150	26,0	234,0	1	10	0,320

Material PP-RCT, lead-free brass.



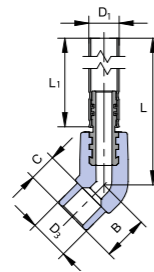
Radiator Turning

CODE	D <sub>1</sub> [mm]	A <sub>1</sub> [mm]	D <sub>2</sub> [mm]	A <sub>2</sub> [mm]	L <sub>1</sub> [mm]	L [mm]	B <sub>1</sub> [mm]	B [mm]	Packing I.	Packing II.	Weight [kg/pc]
SRAO02020X	20	14,5	20	14,5	50,0	109,0	29,5	35,0	1	30	0,098
SRAO02520X	25	16,0	20	14,5	50,0	115,0	32,0	45,0	1	20	0,138



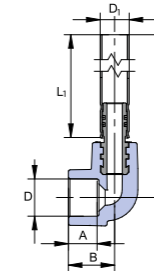
Metal Reducer Cap Nut - Eurokonus

CODE	D [mm]	G	A [mm]	L [mm]	Packing I.	Packing II.	Weight [kg/pc]
SZM02025EX	20	3/4"	14,5	40,0	5	120	0,089



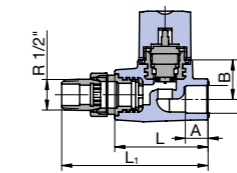
Radiator Connector Elbow 45°

CODE	D <sub>3</sub> [mm]	D <sub>1</sub> [mm]	B [mm]	C [mm]	L [mm]	L <sub>1</sub> [mm]	Packing I.	Packing II.	Weight [kg/pc]
SKORP12045270	20	15	22,5	13	298	270	1	30	0,123
SKORP12045720	20	15	22,5	13	748	720	1	20	0,270



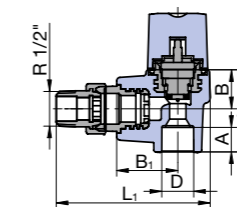
Radiator Connector Elbow 90°

CODE	D [mm]	D <sub>1</sub> [mm]	A [mm]	B [mm]	L [mm]	L <sub>1</sub> [mm]	Packing I.	Packing II.	Weight [kg/pc]
SKORP02090270	20	15	14,5	24	300	270	1	30	0,126
SKORP02090720	20	15	14,5	24	750	720	1	10	0,273



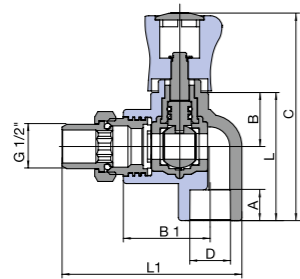
Radiator Valve Straight with Thermostat

CODE	D [mm]	R	A [mm]	B [mm]	L [mm]	L <sub>1</sub> [mm]	Packing I.	Packing II.	Weight [kg/pc]
SVERO20PXX	20	1/2"	14,5	27,5	65	102	5	40	0,265



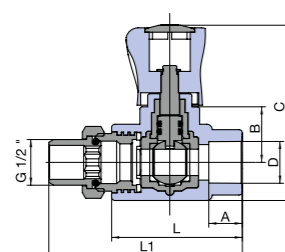
Radiator Valve Angle with Thermostat

CODE	D [mm]	R	A [mm]	B [mm]	B <sub>1</sub> [mm]	L [mm]	L <sub>1</sub> [mm]	Packing I.	Packing II.	Weight [kg/pc]
SVERO20RXX	20	1/2"	14,5	23,5	36,5	49,5	93	5	40	0,269



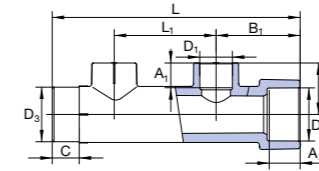
Radiator Valve Angle

CODE	D [mm]	A [mm]	B [mm]	B <sub>1</sub> [mm]	L [mm]	L <sub>1</sub> [mm]	Packing I.	Packing II.	Weight [kg/pc]
SVER020KXX	20	14,5	25,5	41	60	85	5	20	0,192



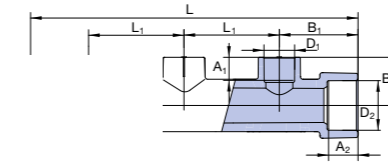
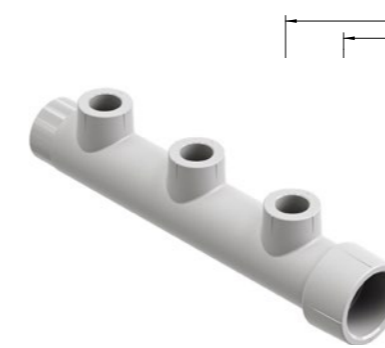
Radiator Valve Straigh

CODE	D [mm]	A [mm]	B [mm]	L [mm]	L <sub>1</sub> [mm]	Packing I.	Packing II.	Weight [kg/pc]
SVER020XXX	20	14,5	25,5	60	89	5	20	0,188



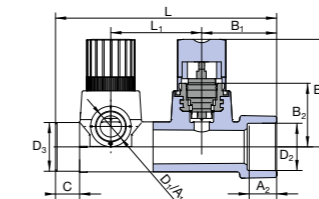
Manifold 2 Circuits PP-RCT

CODE	L <sub>1</sub> [mm]	L [mm]	B <sub>1</sub> [mm]	B <sub>2</sub> [mm]	A <sub>1</sub> [mm]	A <sub>2</sub> [mm]	D <sub>3</sub> [mm]	D <sub>2</sub> [mm]	D <sub>1</sub> [mm]	C [mm]	Pack. I.	Pack. II.	Weight [kg/pc]
SROZ132162RCT	60	146	49,5	30	13	18	32	32	16	16	5	30	0,072
SROZ132202RCT	60	146	49,5	30	16	18	32	32	20	16	5	30	0,068



Manifold 3 Circuits PP-RCT

CODE	L <sub>1</sub> [mm]	L [mm]	B <sub>1</sub> [mm]	B <sub>2</sub> [mm]	A <sub>1</sub> [mm]	A <sub>2</sub> [mm]	D <sub>3</sub> [mm]	D <sub>2</sub> [mm]	D <sub>1</sub> [mm]	C [mm]	Pack. I.	Pack. II.	Weight [kg/pc]
SROZ132162RCT	60	206	49,5	30	13	18	32	32	16	16	5	25	0,103
SROZ132202RCT	60	206	49,5	30	16	18	32	32	20	16	5	25	0,097



Manifold with Regulation 2 Circuits PP-RCT

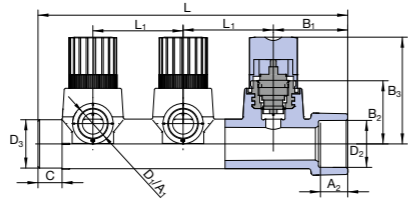
CODE	L <sub>1</sub> [mm]	L [mm]	B <sub>1</sub> [mm]	B <sub>2</sub> [mm]	B <sub>3</sub> [mm]	A <sub>2</sub> [mm]	D <sub>3</sub> [mm]	D <sub>2</sub> [mm]	D <sub>1</sub> [mm]	C [mm]	Pack. I.	Pack. II.	Weight [kg/pc]
SROZIO32162RCT	60	146	49,5	42	77	18	32	32	16	16	1	15	0,326
SROZIO32202RCT	60	146	49,5	42	77	18	32	32	20	16	1	15	0,323

# Catalogue of Products

## Special Fittings for Heating (I.)



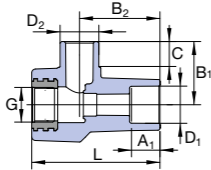
Manifold With Regulation 3 Circuits PP-RCT



CODE	L <sub>1</sub> [mm]	L [mm]	B <sub>1</sub> [mm]	B <sub>2</sub> [mm]	B <sub>3</sub> [mm]	A <sub>1</sub> [mm]	A <sub>2</sub> [mm]	D <sub>1</sub> [mm]	D <sub>2</sub> [mm]	D <sub>3</sub> [mm]	C [mm]	Pack. I.	Pack. II.	Weight [kg/pc]
SROZI032163RCT	60	206	49,5	42	77	13,0	18	16	32	32	16	1	10	0,482
SROZI032203RCT	60	206	49,5	42	77	14,5	18	20	32	32	16	1	10	0,478



Flowmeter Body



CODE	D <sub>1</sub> [mm]	A <sub>1</sub> [mm]	G [mm]	C [mm]	D <sub>2</sub> [mm]	B <sub>1</sub> [mm]	B <sub>2</sub> [mm]	L [mm]	Packing I.	Packing II.	Weight [kg/pc]
SRAO02020X	16	13,0	1/2"	16	20	34	42	67	5	30	0,482
SRAO02520X	20	14,5	1/2"	16	20	34	42	67	5	30	0,478



Flowmeter

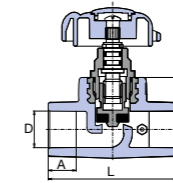
CODE	G [mm]	Packing	Weight [kg/pc]
PRUTMXXXXX	1/2"	1	0,590

# Catalogue of Products

## Standard Products only for Potable (Cold) Water (II.)



Straight - Way Valve with Drain Valve

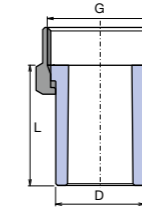


CODE	D [mm]	Type	A [mm]	B [mm]	L [mm]	Packing I.	Packing II.	Weight [kg/pc]
SVEV040PXX	40	right	20,5	41,0	112,0	1	15	0,578
SVEV050PXX	50	right	23,5	48,0	136,0	1	10	0,788
SVEV063PXX	63	right	27,5	60,0	162,0	1	8	1,388
SVEV040LXX	40	left	20,5	41,0	112,0	1	15	0,572
SVEV050LXX	50	left	23,5	48,0	136,0	1	10	0,754
SVEV063LXX	63	left	27,5	60,0	162,0	1	8	1,416

Job-order manufacture, delivery date 30 days.



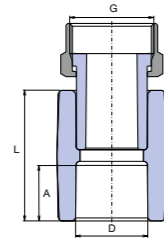
Union Plastic / Brass Unwelded G



CODE	D [mm]	G [mm]	L [mm]	Packing I.	Packing II.	Weight [kg/pc]
SHM02025XX	20	3/4"	40,0	10	200	0,048
SHM02532XX	25	1"	40,0	10	130	0,074
SHM03240XX	32	5/4"	45,0	5	60	0,096

# Catalogue of Products

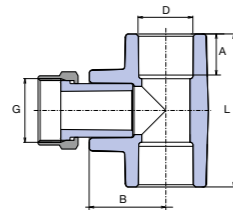
## Standard Products only for Potable (Cold) Water (II.)



Plastic Reducing Sleeve with Cap Nut

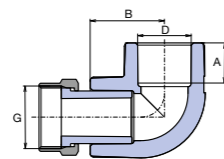
CODE	D [mm]	G	A [mm]	L [mm]	Packing I.	Packing II.	Weight [kg/pc]
SNAM01620X	16	1/2"	13,0	33,0	10	200	0,032
SNAM02020X	20	1/2"	14,5	34,6	20	200	0,034
SNAM02025X	20	3/4"	14,5	34,6	20	200	0,056
SNAM02525X	25	3/4"	16,0	37,8	20	100	0,058
SNAM02532X	25	1"	16,0	37,8	10	100	0,092
SNAM03232X	32	1"	18,0	40,0	10	60	0,102
<b>PMD*</b>							
SNAMD02025	20	3/4"	14,5	34,6	10	100	0,056
SNAMD02525	25	3/4"	16,0	37,8	10	100	0,062

\* PMD – cap nut with a hole under the seal.



Tee Plastic Reducing Sleeve with Cap Nut

CODE	D [mm]	Тип	A [mm]	L [mm]	B [mm]	Packing I.	Packing II.	Weight [kg/pc]
STKM02025X	20	3/4"	14,5	54,0	27,0	10	100	0,069
STKM02525X	25	3/4"	16,0	60,0	32,0	5	60	0,079
STKM02532X	25	1"	16,0	60,0	32,0	5	60	0,157
STKM03225X	32	3/4"	18,0	70,0	35,7	5	50	0,100
STKM03232X	32	1"	18,0	70,0	35,7	5	50	0,135

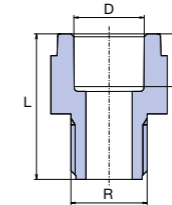


Elbow 90 ° Plastic Reducing Sleeve with Cap Nut

CODE	D [mm]	G	A [mm]	B [mm]	Packing I.	Packing II.	Weight [kg/pc]
SKOM02020X	20	1/2"	14,5	26,8	25	100	0,047
SKOM02025X	20	3/4"	14,5	26,8	20	100	0,062

# Catalogue of Products

## Products for Temporary Use (non Standard) (III.)



All-Plastic Reducer Male Thread

CODE	D [mm]	R	A [mm]	L [mm]	Packing I.	Packing II.	Weight [kg/pc]
SDG02020XX	20	1/2"	14,5	40,0	50	200	0,014
SDG02025XX	20	3/4"	14,5	38,0	20	380	0,012
SDG02525XX	25	3/4"	16,0	42,0	20	200	0,020
SDG03232XX	32	1"	18,0	54,0	20	100	0,038
SDG04040XX	40	5/4"	20,5	62,0	10	70	0,074
SDG05050XX	50	6/4"	23,5	63,0	10	60	0,094
SDG06363XX	63	2"	27,5	81,9	5	20	0,194



Plug – Short

CODE	D [mm]	Packing I.	Packing II.	Weight [kg/pc]
ZAGXXXXXX	1/2"	50	400	0,008

Including rubber seal.



Plug – Long

CODE	D [mm]	Packing I.	Packing II.	Weight [kg/pc]
ZAGDXXXXX	1/2"	50	150	0,022

Including rubber seal.



Metal Sleeve (with Wood Screw)

CODE	D [mm]	Packing	Weight [kg/pc]
PRK02025XX	20 - 25	10	0,056
PRK03240XX	32 - 40	10	0,074
PRK06350XX	50 - 63	10	0,124



Metal Sleeve (Screw / Nut)

CODE	D [mm]	Nut [mm]	Bolt [mm]	Packing	Weight [kg/pc]
PRKB04853X	48 - 53	M8/10		50	0,078
PRKB07278X	72 - 78	M8/10		50	0,146
PRKB08792X	87 - 92	M8/10		50	0,180
PRKB102116	102 - 116	M8/10		50	0,238
VRUTM8100X			M8/100	100	0,023



Plastic Clip

CODE	D [mm]	Packing I.	Packing II.	Weight [kg/pc]
PRE016XXXX	16	50	300	0,004
PRE020XXXX	20	50	500	0,004
PRE025XXXX	25	50	500	0,006
PRE032XXXX	32	50	300	0,008

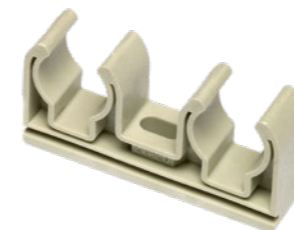


Plastic Clip with Tape

It is connected to other supports in one row

CODE	D [mm]	Packing I.	Packing II.	Weight [kg/pc]
PRP020XXXX	20	50	500	0,008
PRP025XXXX	25	50	500	0,008
PRP032XXXX	32	50	300	0,013
PRP040XXXX	40	50	400	0,016
PRP050XXXX	50	25	100	0,034
PRP063XXXX	63	25	100	0,046
PRP075XXXX*	75	1	-	0,084
PRP090XXXX*	90	1	-	0,114
PRP110XXXX*	110	1	-	0,136

\* Information about delivery on request.



Plastic Double Clip

CODE	D [mm]	Packing	Weight [kg/pc]
PRDV0202XX	2×20	1	0,016
PRDV0252XX	2×25	1	0,022



Welding Machine Electronic R63 (for Paired Adapter)

CODE	Type	Power [W]	Attachment	Packing	Weight [kg/pc]
SVA063XXXX	R63	800	Ø 20 - 63	1	1,820



Welding kit R63 with nozzles 16 - 63 mm

CODE	Type	Power [W]	Attachment	Packing	Weight [kg/pc]
SVAKR63P1663	R63	800	Ø 16 – 63	1	9,223

Job-order manufacture, delivery date 30 days..



Repairing Set

CODE	Type	Packing I.	Packing II.	Weight [kg/pc]
OSAXXXXXXX	Set	1	50	0,186

Repairing set includes 5 pcs of repairing stakes Ø 12 mm and non-paired adapter Ø 12 mm.



Repairing Stakes

CODE	Ø [mm]	Packing I.	Packing II.	Weight [kg/pc]
OTXXXXXXX	12	5	100	0,029



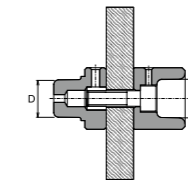
Electrofusion Welding Machine - Elektra Light

CODE	W	Packing	Weight [kg/pc]
SVAELEKTRAL	Ø 20 - 125/160 MM	1	8,000

Job-order manufacture, delivery date 30 days.



Adapter Paired



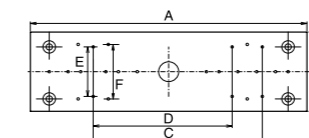
CODE	D [mm]	Packing	Weight [kg/pc]
NAP016XXXX	16	1	0,074
NAP020XXXX	20	1	0,078
NAP025XXXX	25	1	0,138
NAP032XXXX	32	1	0,164
NAP040XXXX	40	1	0,308
NAP050XXXX	50	1	0,333
NAP063XXXX	63	1	0,493
NAP075XXXX	75	1	0,653
NAP090XXXX	90	1	1,089
NAP110XXXX	110	1	1,681
NAP125XXXX	125	1	1,996



Set Holder for Manifolds

- Set contains
- ⊕ 4× plastic holder
  - ⊕ 4× bolt for holder
  - ⊕ 4× screw for holder
  - ⊕ 2× holder

CODE	Fixing distance between plastic holders [mm]	Packing I.	Packing II.	Weight [kg/pc]
SETDRZROZX	200	1	5	0,403



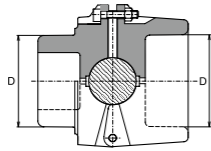
Assembly Plate for Elbow 90° for Wall Mounting



CODE	A [mm]	B [mm]	C [mm]	D [mm]	E [mm]	F [mm]	Packing I.	Packing II.	Weight [kg/pc]
DNPXXXXXX	220,0	64,0	135,0	111,0	45,0	40,0	10	150	0,058

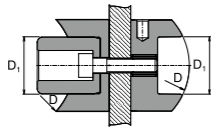
# Catalogue of Products

## Accessories (IV.)



Adapter Non-Paired

CODE	D [mm]	Packing	Weight [kg/pc]
NA016CXXXX	16	1	0,130
NA020CXXXX	20	1	0,133
NA025CXXXX	25	1	0,178
NA032CXXXX	32	1	0,215
NA040CXXXX	40	1	0,379
NA050CXXXX	50	1	0,517
NA063CXXXX	63	1	0,822



Adapter for Weld in Saddle / Paired

CODE	D [mm]	D <sub>1</sub> [mm]	Packing	Weight [kg/pc]
SNNS06332X	63	32	1	0,298
SNNS07532X	75	32	1	0,296
SNNS09032X	90	32	1	0,296
SNNS11040X*	110	40	1	0,432
SNNS12540X**	125	40	1	0,519
SNNS12563X***	125	63	1	1,148

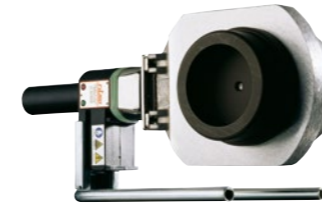
\* for weld in saddle with diameter Ø 110/32, 110/40  
 \*\* for weld in saddle with diameter Ø 125/32, 125/40  
 \*\*\* for weld in saddle with diameter Ø 125/50, 125/63



Welding MP-125

CODE	Type	D [mm]	Packing	Weight [kg/pc]
SVAMP125XX	MP-125	63 - 125	1	37,200

MP 125 Includes frame, stand with welding machine with power consumption of 1400 W, case with accessories.  
 Job-order manufacture, delivery date 30 days.



Welding Machine PRISMA 125

CODE	W	Packing	Weight [kg/pc]
SVA125XXXX	1 400	1	2,760

Job-order manufacture, delivery date 30 days.



Contact Thermometer "DT" Meter

CODE	Type	Packing	Weight [kg/pc]
TEPODXXXXX	DT-METER	1	0,940



Tightening Spanner with Band

CODE	Packing	Weight [kg/pc]
UKXXXXXXXXX	1	0,297



Pipe Cutter - Shear (PROFI)

CODE	D [mm]	Packing	Weight [kg/pc]
NU042PXXXX	16 - 40	1	0,383

# Catalogue of Products

## Accessories (IV.)



Pipe Cutter – Shear (PROFI M2)

CODE	D [mm]	Packing	Weight [kg/pc]
NU063XXXX	16 - 63	1	1,241



Pipe Cutter

CODE	D [mm]	Packing	Weight [kg/pc]
REZ050125X	50 - 125	1	1,400



Stabi Pipe Shaver

CODE	D [mm]	Packing	Weight [kg/pc]
REZS01620X	16 - 20	1	0,134
REZS02025X	20 - 25	1	0,156
REZS02532X	25 - 32	1	0,206
REZS03240X	32 - 40	1	0,266
REZS050XXX	50	1	0,302
REZS063XXX	63	1	0,352
REZS075XXX	75	1	0,386
REZS090XXX	90	1	0,634
REZS110XXX	110	1	0,870



Shavers To Drill Machine For Stabi Pipes

CODE	D [mm]	Packing	Weight [kg/pc]
REZS040VXX	40	1	0,290
REZS050VXX	50	1	0,882
REZS063VXX	63	1	0,406

### PINTLE

CEPXXXXXX		1	0,020
-----------	--	---	-------



Drill For Weld In Saddle

CODE	D [mm]	Packing	Weight [kg/pc]
VNS032XXXX	32	1	0,200
VNS040XXXX	40	1	0,300
VNS063XXXX	63	1	0,740



Galvanized Trough

CODE	D [mm]	l [mm]	Packing I.	Packing II.	Weight [kg/pc]
ZLSP20XXXX	20	2000	1	25	0,331
ZLSP25XXXX	25	2000	1	25	0,428
ZLSP32XXXX	32	2000	1	25	0,516
ZLSP40XXXX	40	2000	1	25	0,607
ZLSP50XXXX	50	2000	1	25	0,732
ZLSP63XXXX	63	2000	1	25	0,879



Sealing Teflon Fibre

CODE	Packing II.	Weight [kg/pc]
TTN50XXXX	50	0,053
TTN150XXXX	150	0,126

# Wavin Ekoplastik PP-R/PP-RCT Piping System diameters 160 - 250 mm

The system consists of monolayer pipes, multilayer pipes and fittings with diameters between 160 - 250 mm and is manufactured from the PP-RCT material.

The system is intended for pressure distribution systems of potable (cold) water, hot water, compressed air, cooling water and air conditioning. The system is compatible with butt welding techniques.

- Estimated delivery time for the listed product range is 30 days.
- Standard products (I.) are covered by a 10-year warranty period.
- Other products (IV.) are covered by a 2-year warranty period.



## Advantages of the system

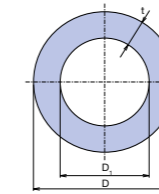
- Pipes and fittings made from PP-RCT (type 4), new generation polypropylene material)
- Pipes and fittings of larger diameters than 125 mm are designed for butt welding
- Same flow profile for both fittings and monolayer pipes - minimal pressure losses

**All 160 - 250 mm products (except for electrofusion couplings) will be replaced by the same products in grey colour during 2024.**

**160 - 250 mm pipes can be made to order also in SDR 7,4 and SDR 9.**

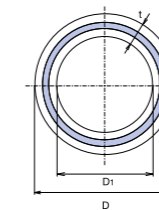
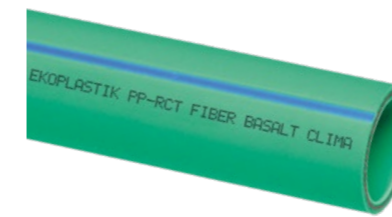
# Catalogue of Products

Products for Potable (Cold) and Hot Water, compressed air, cooling and air conditioning (I.)



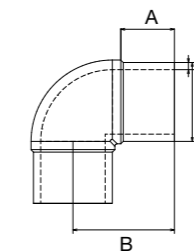
Wavin Ekoplastik PP-RCT pipe  
S 5 / SDR 11

CODE	D [mm]	D <sub>1</sub> [mm]	t [mm]	l [mm]	Packing [m]	Weight [kg/pc]
TTR160RCTS5	160	130,8	14,6	4 000	4	6,420
TTR200RCTS5	200	163,6	18,2	4 000	4	9,950
TTR250RCTS5	250	204,6	22,7	4 000	4	15,500



Wavin Ekoplastik PP-RCT Basalt Clima pipe  
S 5 / SDR 11

CODE	D [mm]	D <sub>1</sub> [mm]	t [mm]	l [mm]	Packing [m]	Weight [kg/pc]
TTRFBC160RCT	160	130,8	14,6	4 000	4	7,185
TTRFBC200RCT	200	163,6	18,2	4 000	4	11,157
TTRFBC250RCT	250	204,6	22,7	4 000	4	16,870

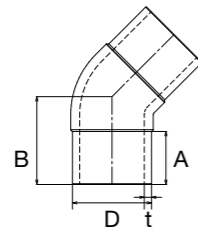


Elbow 90° PP-RCT (Butt Fusion)  
S 5 / SDR 11

CODE	D [mm]	A [mm]	B [mm]	t [mm]	Packing [pc]	Weight [kg/pc]
TKO16090XXX	160	103	210	14,6	1	3,000
TKO20090XXX	200	115	239	18,2	1	5,200
TKO25090XXX	250	116	250	22,7	1	10,500

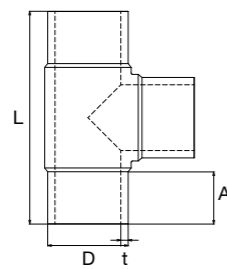
# Catalogue of Products

Products for Potable (Cold) and Hot Water, compressed air, cooling and air conditioning (I.)



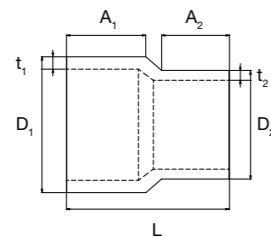
Elbow 45° PP-RCT (Butt Fusion)  
S 5 / SDR 11

CODE	D [mm]	A [mm]	B [mm]	t [mm]	Packing [pc]	Weight [kg/pc]
TKO16045XXX	160	107	175	14,6	1	2,400
TKO20045XXX	200	118	190	18,2	1	4,000
TKO25045XXX	250	130	215	22,7	1	7,100



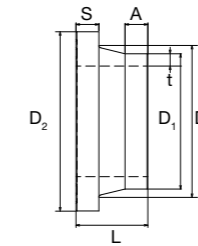
Tee PP-RCT (Butt Fusion)  
S 5 / SDR 11

CODE	D [mm]	A [mm]	B [mm]	t [mm]	Packing [pc]	Weight [kg/pc]
TTK160XXXXX	160	104	423	14,6	1	4,100
TTK200XXXXX	200	117	501	18,2	1	7,200
TTK250XXXXX	250	131	595	22,7	1	13,600



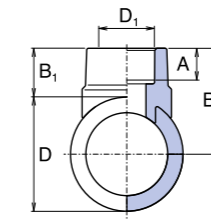
Reducer PP-RCT (Butt Fusion)  
S 5 / SDR 11

CODE	D <sub>1</sub> [mm]	D <sub>2</sub> [mm]	t <sub>1</sub> [mm]	t <sub>2</sub> [mm]	A <sub>1</sub> [mm]	A <sub>2</sub> [mm]	L [mm]	Packing [pc]	Weight [kg/pc]
TRE1160110X	160	110	14,6	-	106	92	226	1	1,200
TRE1160125X	160	125	14,6	-	105	93	220	1	1,328
TRE1200160X	200	160	18,2	14,6	117	100	240	1	2,100
TRE1250160X	250	160	22,7	14,6	60	56	162	1	3,000
TRE1250200X	250	200	22,7	18,2	128	116	274	1	3,600



Flange Adapter PP-RCT (Butt Fusion)  
S 5 / SDR 11

CODE	D <sub>1</sub> [mm]	D <sub>2</sub> [mm]	D <sub>3</sub> [mm]	S [mm]	A [mm]	t [mm]	L [mm]	Packing [pc]	Weight [kg/pc]
TLN160XXXXX	160	212	175	27	27	18,2	85	1	0,960
TLN200XXXXX	200	268	232	34	50	14,6	130	1	2,300
TLN250XXXXX	250	320	285	36	38	22,7	121	1	3,100

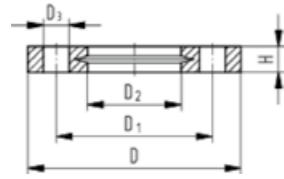


PP-RCT Weld in Saddle  
S 5 / SDR 11

CODE	D [mm]	D <sub>1</sub> [mm]	A [mm]	B <sub>1</sub> [mm]	B [mm]	Packing [pc]	Weight [kg/pc]
TNS16040XX	160	40	16,5	35,0	115,0	1	0,054
TNS16050XX	160	50	18,5	41,5	121,5	1	0,095
TNS16063XX	160	63	22,0	41,8	121,8	1	0,155
TNS20050XX	200	50	15,5	41,5	141,5	1	0,090
TNS20063XX	200	63	22,0	41,8	141,8	1	0,159
TNS20075XX	200	75	25,0	45,0	145,0	1	0,220
TNS20090XX	200	90	27,0	61,0	161,0	1	0,505
TNS25063XX	250	63	22,0	41,8	166,8	1	0,145
TNS25075XX	250	75	25,0	45,0	170,0	1	0,215
TNS25090XX	250	90	27,0	61,0	186,0	1	0,485
TNS250110X	250	110	31,0	66,8	191,8	1	0,660

# Catalogue of Products

Products for Potable (Cold) and Hot Water, compressed air, cooling and air conditioning (I.)

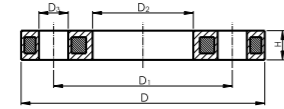


Flange PP-Glass Fiber Reinforced PN16

CODE	d [mm]	DN [mm]	D [mm]	D <sub>1</sub> [mm]	D <sub>2</sub> [mm]	D <sub>3</sub> [mm]	H [mm]	Y	Packing [pc]	Weight [kg/pc]
FF700517W*	160	150	285	241	178	22	32	8	1	1,200
FF700519W*	200	200	340	297	235	22	34	8	1	1,400
FF700521W*	250	250	395	350	288	22	38	12	1	2,052

\* Information about delivery on request.

Flange PP - Glass Fiber Reinforced (30% GF) / Y – number of bore holes.

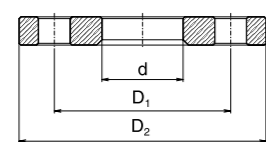


Flange PP-Steel Plate Reinforced PN16

CODE	d [mm]	DN [mm]	D [mm]	D <sub>1</sub> [mm]	D <sub>2</sub> [mm]	D <sub>3</sub> [mm]	H [mm]	Y	Packing [pc]	Weight [kg/pc]
FF700217W*	160	150	285	241	178	22	26	8	1	3,491
FF700219W*	200	200	340	297	235	22	29	8	1	5,600
FF700221W*	250	250	395	350	288	22	32	12	1	6,632

\* Information about delivery on request.

Screw diameter M16 / Y – number of bore holes.



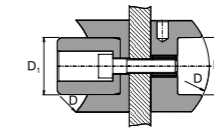
Flange

CODE	Type	D <sub>1</sub> [mm]	D <sub>2</sub> [mm]	d [mm]	Y	Packing [pc]	Weight [kg/pc]
PRI160NXXX	160	240	285	178	10	1	6,800
PRI200NXXX	200	355	405	238	12	1	10,500
PRI250NXXX	250	355	405	292	12	1	12,900

Y – number of bore holes

# Catalogue of Products

Accessories (IV.)



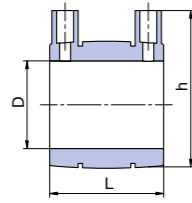
Adapter for Weld in Saddle / Paired

CODE	D [mm]	D <sub>1</sub> [mm]	Packing [pc]	Weight [kg/pc]
SNNS16040X	160	40	1	0,545
SNNS16050X	160	50	1	0,780
SNNS16063X	160	63	1	1,200
SNNS20050X	200	50	1	0,785
SNNS20063X	200	63	1	1,220
SNNS20075X	200	75	1	1,665
SNNS20090X	200	90	1	2,885
SNNS25063X	250	63	1	1,220
SNNS25075X	250	75	1	1,680
SNNS25090X	250	90	1	2,930
SNNS250110	250	110	1	3,530



Drill for Weld in Saddle

CODE	D [mm]	Packing [pc]	Weight [kg/pc]
VNS040XXXX	40	1	0,300
VNS050XXXX	50	1	0,500
VNS063XXXX	63	1	0,640
VNS075XXXX	75	1	0,710
VNS090XXXX	90	1	0,870
VNS110XXXX	110	1	1,220



**Electrofusion Coupling  
S 5 / SDR 11**

CODE	D [mm]	L [mm]	h [mm]	Packing [pc]	Weight [kg/pc]
ENA160PPRCT	160	176,0	205,0	1	1,300
ENA200PPRCT	200	187,0	245,0	1	1,900
ENA250PPRCT	250	243,0	315,0	1	4,500



**Basic 250 Easy Life  
Assembly Jig**

CODE	Type	Packing [pc]	Weight [kg/pc]
SVAMP250XX	Basic 250 Easy Life	1	100

**The assembly jig comprises the following:**

- ⦿ A jig with four clamps and two hydraulic cylinders with non-drip quick couplers
- ⦿ One extractable heating plate
- ⦿ One extractable milling cutter with a safety microswitch
- ⦿ One electrohydraulic gearcase with a clamp opening and closing lever
- ⦿ Hydraulic hoses with non-drip quick couplers
- ⦿ SmartLock adapters (Ritmo patent) for the 75 - 225 mm diameters



**Basic 315 Easy Life  
Assembly Jig**

CODE	Type	Packing [pc]	Weight [kg/pc]
SVAMP315XX	Basic 315 Easy Life	1	123

**The assembly jig comprises the following:**

- ⦿ A jig with four clamps and two hydraulic cylinders with non-drip quick couplers
- ⦿ One extractable heating plate
- ⦿ One electrohydraulic gearcase with a clamp opening and closing lever
- ⦿ One electrohydraulic gearcase with a clamp opening and closing lever
- ⦿ Hydraulic hoses with non-drip quick couplers
- ⦿ SmartLock adapters (Ritmo patent) for the 90 - 280 mm diameters, Ø 250 mm transition



- ⦿ For production and testing is used standard EN ISO 15874. Requirements from this standard are stated in PN 01 (Internal Company Standard).
- ⦿ The application and assembling of products have to conform to assembly regulations of Wavin PP-R/PP-RCT system.
- ⦿ System of quality is certified in accordance with ISO 9001-2000
- ⦿ Extended warranty period 10 years for standard products (I, II).
- ⦿ Common warranty period 2 years for other products (III, IV).

**ВЖИВАНІ СКОРОЧЕННЯ:**

- CODE – purchasing code
- S (PN) – serie / pressure line
- Packing I. – small packing
- Packing II. – big packing
- G – female cylindrical thread no sealing on threads
- Rp – female cylindrical thread sealing on threads
- R – male conical thread sealing on threads

Wavin Czechia is constantly improving and modernizing its products, therefore reserves the right to modify and change specifications of its products without prior notice. All information published in this edition of the catalog on the moment of submission of materials for printing, fully corresponds the current volume of the assortment and the list of technical product parameters. The specified catalog is not commercial proposal, in accordance with the Civil Code, but only contains product information.

# Discover our broad portfolio at [wavin.com](https://wavin.com)

- Water management
- Heating and cooling
- Water and gas distribution
- Waste water drainage
- Cable ducting



Wavin is part of Orbia, a community of companies working together to tackle some of the world's most complex challenges.

We are bound by a common purpose:  
To Advance Life Around the World.

**Wavin Middle East** | Tiffany Tower no. 2408 W Cluster JLT / Dubai / United Arab Emirates  
Tel: +97 14 276 6968 | E-mail: [wavin.me@wavin.com](mailto:wavin.me@wavin.com) | <https://wavin.com/en-ae>

Wavin operates a programme of continuous product development, and therefore reserves the right to modify or amend the specification of their products without notice. All information in this publication is given in good faith, and believed to be correct at the time of going to press. However, no responsibility can be accepted for any errors, omissions or incorrect assumptions.

© 2023 Wavin Wavin reserves the right to make alterations without prior notice. Due to continuous product development, changes in technical specifications may change. Installation must comply with the installation instructions.